

# Work Platform

Operation and Maintenance Manual



Register your  
**WARRANTY**  
within 30 days  
of purchase



888-376-7027 | [BlueDiamondAttachments.com](http://BlueDiamondAttachments.com)



BD-092

# Introduction: Owner Information

Thank you for your decision to purchase a Blue Diamond® Work Platform. To ensure maximum performance of your equipment, it is mandatory that you thoroughly study the Operator's Manual and follow the recommendations. Proper operation and maintenance are essential to maximize equipment life and prevent personal injury.

Operate and maintain this equipment in a safe manner and in accordance with all applicable local, state, and federal codes, regulations and /or laws. Follow all on-product labeling and instructions.

Make sure that all personnel have read this Operator's Manual and thoroughly understand safe and correct operating, installation, and maintenance procedures.

Blue Diamond® is continually working to improve its products. Blue Diamond® reserves the right to make any improvements or changes as deemed practical and possible without incurring any responsibility or obligation to make any changes or additions to equipment sold previously.

Although great care has been taken to ensure the accuracy of this publication, Blue Diamond® makes no warranty or guarantee of any kind, written or expressed, implied or otherwise with regard to the information contained within this manual. Blue Diamond® assumes no responsibility for any errors that may appear in this manual and shall not be liable under any circumstances for incidental, consequential or punitive damages in connection with, or arising from the use of this manual.

Keep this manual available for frequent reference. All new operators or owners must review the manual before using the equipment and annually thereafter. Contact your Blue Diamond® Attachments Dealer for assistance, information, or additional copies of the manual. Contact [www.bluediamondattachments.com](http://www.bluediamondattachments.com) or call 888-376-7027 for a complete list of dealers in your area.

## Serial Number Location:

Please record attachment information in the space provided for future reference.



Model Number: \_\_\_\_\_

Serial Number: \_\_\_\_\_

Dealer Name: \_\_\_\_\_

Dealer Number: \_\_\_\_\_

Date of Purchase: \_\_\_\_\_

The serial number plate is located on the front left of the platform on the left as shown above.

Always use your serial number when requesting information or when ordering parts.

**NOTE:** The directions left, right, front, and rear, as mentioned throughout this manual, are as viewed from the operator's position.

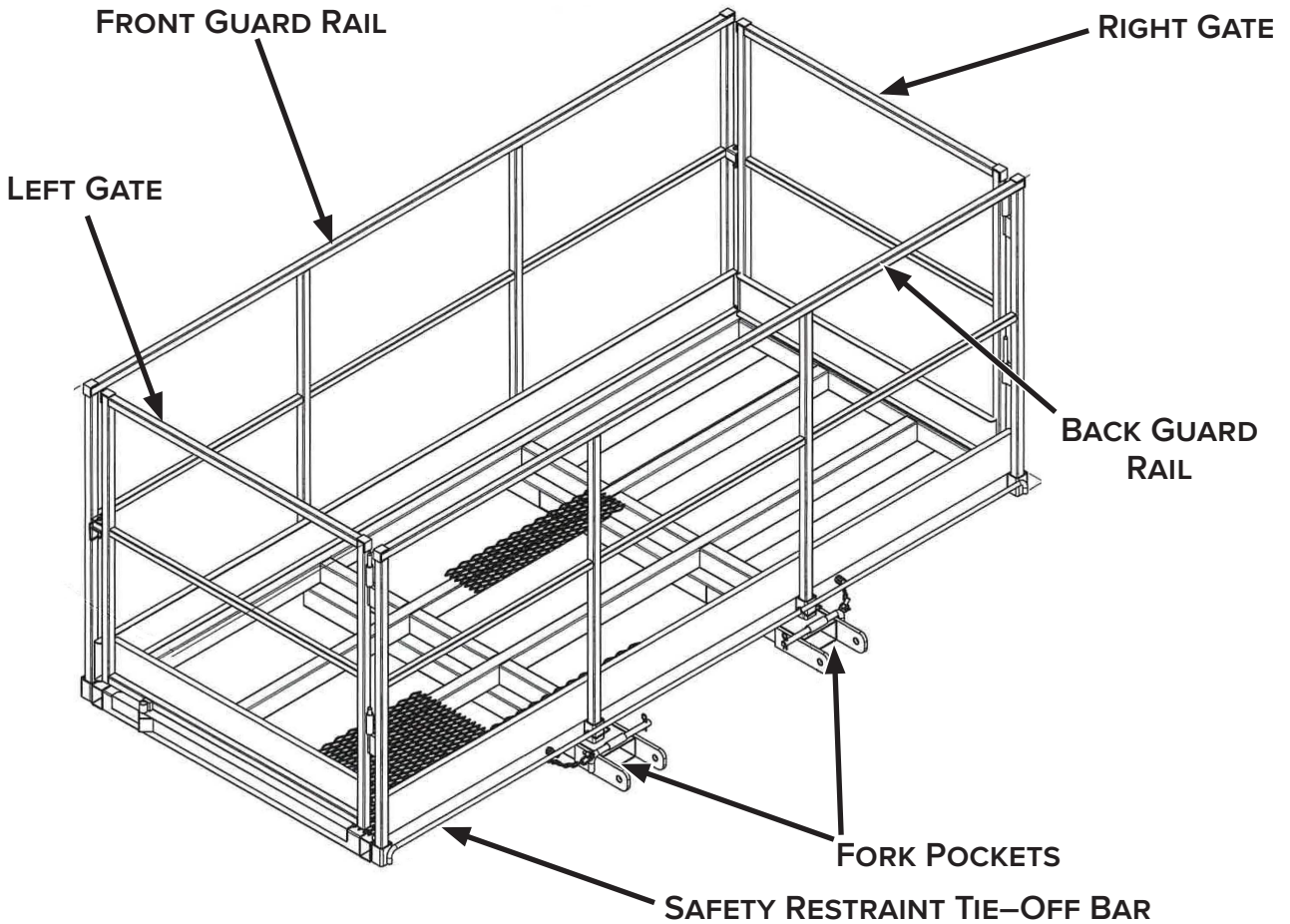
# Table of Contents

---

Introduction: <b>Owner Information</b> .....	2
1. Introduction.....	4
1.1 <b>Attachment Identification</b> .....	4
1.2 <b>About this Attachment</b> .....	4
2. OSHA .....	5
2.1 <b>Compliance with OSHA Standards</b> .....	5
3. Safety .....	6
3.1 <b>General Safety Information</b> .....	6
3.2 <b>Operators</b> .....	7
3.3 <b>Safety Guidelines</b> .....	8
4. Operation .....	11
4.1 <b>Pre-Operation</b> .....	11
4.2 <b>Attachment Assembly and Disassembly</b> .....	12
4.3 <b>Attachment Installation</b> .....	13
4.4 <b>Removal and Storage</b> .....	13
5. Maintenance.....	14
5.1 <b>Service Schedule</b> .....	14
6. Parts.....	16
6.1 <b>Main Breakdown</b> .....	16
6.2 <b>Safety Decals</b> .....	18
7. Specifications.....	19
7.1 <b>Attachment Specifications</b> .....	19
7.2 <b>Torque Specifications</b> .....	20
Warranty .....	21

# 1. Introduction

## 1.1 Attachment Identification



## 1.2 About this Attachment

Our Work Platform is designed with safety in mind when lifting personnel. The mesh floor gives the driver visibility while providing stable non-slip footing. The weight capacity is 2,000 lbs, and end-fork pockets are standard on 6' and larger platforms for moving and loading in tight areas.

## 1.3 Attachment Model Numbers

MODEL NUMBER	SIZE	FORK POCKET SIZE
117010	4' x 6'	Standard
117015	4' x 8'	Standard
117016	4' x 8'	Large
117020	4' x 9'8"	Standard
117021	4' x 9'8"	Large
117023	4' x 11'6"	Standard
117025*	4' x 12'	Standard
117026*	4' x 12'	Large

\*These models do not meet OSHA standards unless used on a machine with outriggers.

DO NOT use any work platform on a skid steer under ANY circumstance.

## 2. OSHA

---

### 2.1 Compliance with OSHA Standards

Our Work Platform is built according to OSHA standards.

- Personal Fall Arrest System Required
- Equipped with a Top and Mid Rail
- Guard Rail System Withstands 200 lbs of Force
- Minimum 42" Guard Rail System
- Minimum 3.5" Toe Board
- Gate Swings Away From the Hole

Always follow the guidelines and the intended use of platforms on telehandlers as outlined in ANSI/ITSDF B56.1–2020 and ANSI/ITSDF B56.6–2016 guidelines and this manual.

#### **OSHA Regulations That Must Be Performed**

- Periodic, documented inspection of the Work Platform itself
- Periodic, documented inspection of the forklift or telehandler used to lift the Work Platform
- Inspection of the Safety Restraint Tie–Off System
- Inspection of welding equipment if it is to be used while standing on the Work Platform
- Safety decals must be replaced if missing or illegible

#### **For Low Lift and High Lift Industrial Trucks**

Per ANSI/ITSDF B56.1–2020, paragraph 7.37.3(e), “floor dimensions that neither exceed two times the load center distance listed on the truck nameplate, measured parallel to the longitudinal center plane of the truck, nor have a width greater than the overall width of the truck (measured across the load bearing tires) plus 250 mm on either side”. For example, if the forklift is 60 in. (1524 mm) wide over the load bearing tires, work platforms up to 80 in. (2030 mm) wide (60 in. + 10 in. + 10 in.) may be used as long as the provided other requirements within this manual and applicable standards are met.

#### **For Rough Terrain Industrial Trucks**

Per ANSI/ITSDF B56.6–2016, there is no width limit specified in the standard. However, a new load chart for the machine is required when using a work platform. New load charts should be requested from the manufacturer for machines that are compatible with and intended to be used with the work platform. Also be aware that the manual for certain machines will prohibit lifting personnel. In this case, the use of any work platform, or other means of lifting personnel is not approved.

## 3. Safety

### 3.1 General Safety Information



This **SAFETY ALERT SYMBOL** identifies important safety messages on the equipment and in the owner's manual. When you see this symbol, be alert to the possibility of personal injury and carefully read the message that follows.



The signal word **IMPORTANT** identifies procedures which must be followed to avoid damage to the machine.



The signal word **DANGER** on the machine and in the manuals indicates a hazardous situation which, if not avoided, will result in death or serious injury.



The signal word **WARNING** on the machine and in the manuals indicates a potentially hazardous situation which, if not avoided, could result in death or serious injury.



The signal word **CAUTION** on the machine and in the manuals indicates a potentially hazardous situation which, if not avoided, may result in minor or moderate injury. It may also be used to alert against unsafe practices.

**NOTE:** Notes are used to indicate important information. This information may be repeated in other areas of the manual.

### Operating Safety

- Read and follow instructions in this manual and the machine's Operator's Manual before operating.
- The manual must always remain with the machine. In case of loss or damage, request a new copy from your dealer or from Blue Diamond®.
- Strictly follow all rules prescribed by the safety pictograms / decals applied to the machine. Ensure that all safety pictograms / decals are legible. If pictograms / decals are worn, they must be replaced with new ones obtained from Blue Diamond® and placed in the position indicated by this manual.
- Before using the machine, make sure that all safety devices are installed and in good working condition.
- It is absolutely forbidden to remove or alter safety devices and / or safety precautions
- If the use of the machine is required at night or in conditions of reduced visibility, use the lighting system of the lift machine and an auxiliary lighting system if required.

## 3. Safety

### 3.2 Operators

#### Qualified Operators

The operator is a person suited to the work and who is physically and psychologically able to withstand the demands connected with operating the equipment for its intended use. The operator must not allow anyone to approach the machine while it is working and must not allow external personnel to operate the machine or attachment.

The operator is to follow the given instructions in this manual and the machine Operator's Manual in order to obtain maximum performance, minimal fuel consumption, and maximum safety for himself or herself and for others.

The operator is responsible for scrupulously observing all the instructions given in this manual.



**DANGER**



#### **AVOID SERIOUS INJURY OR DEATH**

Operators must receive instructions before operating the machine. Untrained operators can cause serious injury or death.

For an operator to be qualified, he or she must not use drugs or alcoholic drinks which impair alertness or coordination while working. An operator who is taking prescription drugs must get medical advice to determine if he or she can safely operate a machine and the equipment. For an operator to be qualified, he or she must have read and understood the instructions of this manual, he or she must make adequate preparation for the proper use of the machine, and he or she must hold a driving license.

In case of doubt regarding the use of the machine and/or the interpretation of this manual, the operator must contact either their dealer or Blue Diamond®.

#### Operator Training

- Check the rules and regulations at your location. The rules may include an employer's work safety requirements. Regulations may apply to local driving requirements or use of a Slow Moving Vehicle (SMV) emblem. Regulations may identify a hazard such as a utility line.
- The new operator must start in an area without bystanders and with no one inside the Work Platform and use all the controls until he or she can operate the machine safely under all conditions of the work area.

#### Operator Safety

- Before starting, and during operation of the attachment, if there is a possibility of falling objects from the platform, establish a controlled perimeter directly underneath the platform and extends outward 10 feet (3 m) in all directions.
- During operation, adjustment, maintenance, repairing, or transportation of the machine, the operator must always use appropriate Personal Protective Equipment (PPE) including but not limited to safety glasses, working gloves, dust masks, safety helmets, safety harnesses, and hearing protection.
- Do not operate the attachment or machine while wearing loose fitting clothing that can be entangled or caught in parts of the machine.
- Do not operate the implement when tired, not in good condition, or under the influence of alcohol or drugs.

## 3. Safety

### 3.3 Safety Guidelines

#### Operating Safety

- Read and follow instructions in this manual and the machine's Operator's Manual before operating.
- The Work Platform must be fully assembly before use. It is not permitted to be used if all guard rails and gates are not installed.
- Inspect the attachment prior to use. (See 4.1 Pre-Operation on page 11.)
- Under no circumstances should young children be allowed to work with this equipment.
- This equipment is dangerous to persons unfamiliar with its operation. They should not be permitted onto the Work Platform.
- Check for overhead lines before operating equipment.
- In addition to the design and configuration of equipment, hazard control and accident prevention are dependent upon the awareness, concern, prudence and proper training of personnel involved in the operation, transport, maintenance, and storage of equipment.
- Check that the attachment is securely fastened to the lifting machine.
- Operate the equipment only from the operator's position.
- Operate the equipment according to the Operator's Manual.
- When learning to operate the equipment, do it at a slow rate in an area clear of bystanders with no one in the Work Platform.
- DO NOT permit personnel to be in the work area when operating the equipment.
- DO NOT modify the equipment in any way. Unauthorized modification may impair the function and / or safety and could affect the life of the equipment.

 **DANGER** 

**AVOID SERIOUS INJURY OR DEATH**

The equipment must be used **ONLY** on approved machines. Skid steers are not permitted to be used with the Work Platform.

- DO NOT make any adjustments or repairs on the equipment while the machine is running.
- Keep all guards in place. Replace if damaged.
- Inspect each work area for the forklift / telehandler. Make sure the intended lifting area is level and solid. Look for any condition that could make the lifting machine unstable. Avoid operating when conditions are not level or secure.
- DO NOT operate in a work area that has not been inspected for foreign debris and obstacles.
- Remove any foreign objects, and clearly mark any objects that cannot be removed, such as electrical lines.
- Wear safety glasses, gloves, hearing protection, safety harnesses, and other protective clothing when required.
- Makeshift devices and step ladders shall not be used to increase the lifting height of the platform / machine combination nor shall the machine be driven onto a temporary surface to gain additional height.
- Do not stack material on the Work Platform's floor higher than the toe-board unless it is a single object that is taller than the mid-rail.
- Do not enter and / or exit the Work Platform when it is elevated. Only enter and / or exit when the attachment is fully resting on the ground.
- Unauthorized personnel are forbidden from entering and / or riding on the attachment.
- A communication system must to be established between personnel in the platform and the operator of the lift machine prior to elevation.



## 3. Safety

---

### 3.3 Safety Guidelines Cont'd

#### Operating Safety Cont'd

- Attach the safety harness to the Safety Restraint Tie–Off Bar on the backside of the Work Platform above the fork pockets.
- In the event that the machine will need to be moved while the attachment is in use, lower the platform and have the personnel exit the attachment before moving the machine.
- Plan the lift and position the machine before lifting any personnel. When personnel ask for adjustment, perform it slowly and safely.
- Personnel must never stand on any surface of the guard rail to increase elevation.

#### Machine Requirements and Capabilities

- Keep bystanders clear of moving parts and the work area. Keep children away.
- The machine manufacturer (i.e. telehandler or forklift) has approved it to be used with work platforms.
- Lifting machines used must be fully OSHA compliant.
- The lift capacity of the machine being used to lift the Work Platform shall never be exceeded, including personnel, materials, tools, etc.
- The forklift or telehandler driver must be properly licensed and trained in the use of Work Platforms.
- The forklift or telehandler driver must remain at the controls of the machine with the engine running at all times that personnel are on the Work Platform, and it is elevated higher than 6 feet (2 m).
- The machine must not be moved when personnel are inside the Work Platform. The machine should be in neutral with the parking brake set.
- Work Platforms should always be level and never tilted forward.
- Never use Work Platforms to transport personnel.

- If the machine is equipped with stabilizers, it is recommended that these are in the down position to provide additional stability.
- The Work Platform must not exceed 10 inches (25 cm) past each side of the load bearing tires.

#### While Operating

- Close and pin both gates before elevating personnel. All guard rails must be in place and pinned. Never climb or use the guardrails as ladders.
- The lift machine operator must remain at the controls at all times. The parking brake must be set, and the operator must remain alert to the personnel and the environment around them.
- Do not overload the platform and lifting machine.
- Check twice to make sure all locking mechanisms are secure.
- DO NOT exceed the maximum number of occupants.

#### Fall Hazards

- When using the Work Platform to lift to any height above ground, each person must wear an approved safety harness. [Ref 29 CFR 1926.453(b)(2)(v)].
- Safety harnesses must be securely fastened to the Safety Restraint Tie–Off Bar at the base of the Work Platform. Follow the manufacturer's instructions.
- No other attachment of any kind is EVER authorized to be attached to the Safety Restraint Tie–Off Bar.
- All safety harnesses must comply with the OSHA certification requirements [Ref 29 CFR 1926.502(d)] and must have a documented inspection before each use.
- All fall arrest systems / safety harnesses shall be worn in accordance to the manufacturer's recommendations.

## 3. Safety

### 3.3 Safety Guidelines Cont'd

#### Fall Hazards Cont'd

- Provisions must be put in place for prompt rescue in the event of a fall.
- If a fall arrest system is subjected to a fall event, it must be immediately removed from service.

#### Transporting Safety

- Comply with state and local laws governing highway safety and movement of machinery on public roads.
- Check local laws for all highway lighting and marking requirements.
- Always yield to oncoming traffic and move to the side of the road so any following traffic may pass.
- Never allow riders on either machine or equipment.
- If transporting the equipment on a truck or trailer, make sure the equipment is properly secured to the transport vehicle.

#### Electrical Safety

- 10 feet (3 m) of clearance must be maintained between the Work Platform and any electrical lines. All electrical lines are considered live unless they are shut off and labeled as such by authorized personnel.
- If welding is being performed, a grounding strap shall be connected to the building or a grounded object. The size of the grounding strap must at least be the size of the work lead of the welder.
- Do not let a welding rod or an uninsulated lead come into contact with the Work Platform or the hoisting vehicle.

#### Collision Hazards

- Adequate clearance between the Work Platform and physical objects must be maintained when occupied.
- A tag line must be attached to loads being hoisted near an occupied Work Platform.

#### Personal Protective Equipment



**Proper Work Clothes:** To help ensure your safety as a designated operator. Wear proper work clothes including tight fitting clothes, protective gloves and shoes.



**Hand Protection:** To help ensure your safety as a designated operator, wear protective gloves.



**Protective Shoes:** To help ensure your safety as a designated operator, wear protective shoes.



**Safety Helmet:** To help ensure your safety as a designated operator, wear a safety helmet.



**Safety Helmet and Eye/Ear Protection:** To help ensure your safety as a designated operator, wear a safety helmet and eye/ear protection.



**Safety Harness:** To help ensure your safety as a designated operator wear a safety harness / fall arrest system.

#### Environmental Hazards

- Do not use the Work Platform when high winds and storms are present.
- Ice, snow, or other slippery substances must be completely cleared from the Work Platform before use.

## 4. Operation



### 4.1 Pre–Operation


#### Work Platform Inspection

- Visually inspect the Work Platform for physical damage, corrosion, welds are intact with no cracks, and overall cleanliness.
- The Work Platform is free of ice, snow, caked mud, and other debris.
- Visually check the Safety Restraint Tie–Off Bar for integrity, cleanliness, and / or damage.
- Ensure no sharp or cutting edges can injure workers, snag clothing, or abrade fall arrest system lifelines.
- Gates must open and close smoothly.
- Gate latches must be in proper working order.
- All safety harnesses still attached to the safety restraint tie–off bar during previous operation have been removed from previous use.
- Ensure that all carriage tilt, frame sway, and other tilting functions on the lift machine are disabled.
- Verify that the Work Platform is installed properly on the fork tines, placed all the way on the back of the work with the retaining pins and chains installed.
- Verify that all moving parts on the machine are guarded against accidental contact by the Work Platform occupants.

#### Recommended Machine Inspection

- Ensure no battery corrosion or petrochemical leaks.
- Check that there are no leaks throughout the hydraulic system.

**WARNING**



Leaking fluids under pressure can enter the skin and cause serious injury or death. Immediate medical attention is required. **Wear goggles. Use cardboard to check for leaks.**

- Fork tines, top clips, and retaining pin and heel are undamaged and have an acceptable level of wear.
- Overhead guard is in place.
- Brakes and parking brakes must function properly.
- Tires are in good, working condition.
- Seatbelt functions properly and is in good condition.
- Horn, back up alarm, lights, and all gauges are operative.
- All markings and ID plates are legible.
- The machine must have an acceptable level of cleanliness.
- All controls must function properly.
- Refer to the machine’s Owner’s Manual for additional inspections items and further recommendations.

## 4. Operation

### 4.2 Attachment Assembly and Disassembly

The Work Platform must be completely assembled before mounting onto the machine.

Blue Diamond® recommends to use two people to lift heavy components when assembling. No tools are required.

1. Insert the front and back guard rails (Figure 1, Item 1) into the floor / base (Item 2). Insert the ring-lock pins (Item 3) through the holes both in the floor / base and the guard rail. Lock the pins.

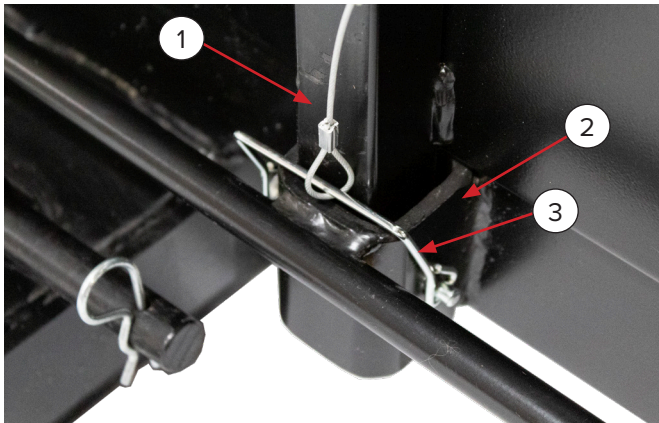


Figure 1

2. Lift each gate, and align the hinge tubes to the hinge pins. Lower the gate until it is resting on the hinge pins. See Figure 2.



Figure 2

3. To secure the gate, close the gate and align latch holes. Insert a ring-lock pin through the aligned holes. See Figure 3.



Figure 3

4. Remove the door retaining pin and the r-clip from the bottom of the gate (Figure 4, Item 1). Insert the pin through the v-shaped hole (Item 2) where the gate meets the base / floor. Make sure to secure the pin with the r-clip.

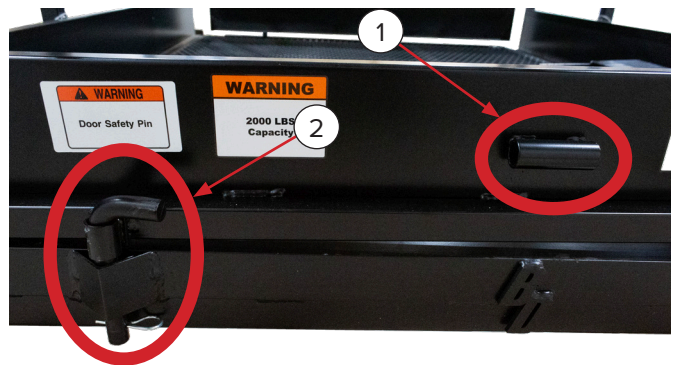


Figure 4

To disassemble, reverse the order of these steps.

## 4. Operation

---

### 4.3 Attachment Installation

Make sure to remove the shipping blocks in each of the fork pockets prior to installation. These are for shipping purposes only.

The Work Platform must be secured ALL the way at the back of the forks. Ensure that the forks do not extend out of the fork pockets at the front of the attachment. This is to provide added safety for personnel and to prevent damage to the work area. DO NOT mount on the end fork slots. These are used for transportation only.

Secure the Work Platform to the machine by placing the retaining pins behind the fork heels and the safety chain to the carriage of the machine.

### 4.4 Removal and Storage

Unhook the retaining pins and safety chains. The shipping blocks can be placed back into the fork pockets to provide added protection.

Place in a storage location.

DO NOT store in a location where water can accumulate in any portion of the work platform, especially during winter and freezing conditions can damage the components.

**NOTE:** The Work Platform can be disassembled for ease of storage but must be properly reassembled prior to next use.

## 5. Maintenance

### 5.1 Service Schedule

DESCRIPTION	SERVICE PROCEDURES					
	Check	Clean	Lube	Change	Adjust	Drain
<b>Daily Maintenance (or every 8 hours)</b>						
Guard Rails (cracks, bends, or damage)	•					
Platform Floor (replace missing/broken chains)	•					
All Hardware	•					
<b>Weekly Maintenance (or every 40 hours)</b>						
All Hardware	•					
<b>Monthly Maintenance</b>						
Paint and Rust*	•					
All Hardware	•					

\*Refer to 5.2 Troubleshooting.

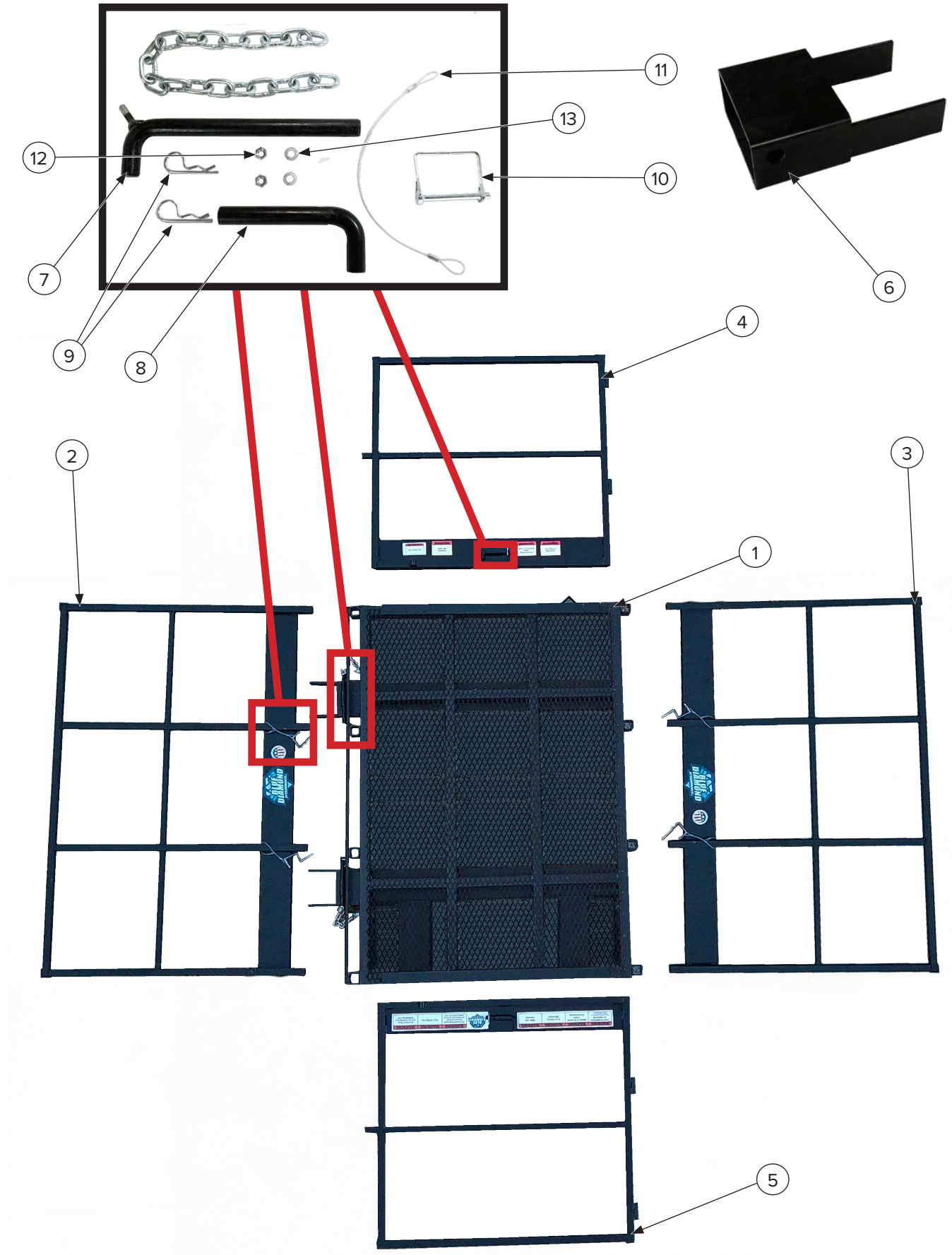
### 5.2 Troubleshooting

PROBLEM	CAUSE	SOLUTION
Rust	Paint is chipped	Clean and repaint the affected area.
		If severe rust is compromising structural integrity, repair or replace affected components.

**This page intentionally  
left blank**

## 6. Parts

### 6.1 Main Breakdown





## 6. Parts

### 6.1 Main Breakdown Cont'd

ITEM	PART NUMBER	DESCRIPTION	QTY
1	217000	Floor Weldment – 4' x 6'	1
	217001	Floor Weldment – 4' x 8'	
	217003	Floor Weldment – 4' x 8' Large Fork Pockets	
	217004	Floor Weldment – 4' x 9'8"	
	217006	Floor Weldment – 4' x 9'8" Large Fork Pockets	
	217007	Floor Weldment – 4' x 11'6"	
	217008	Floor Weldment – 4' x 12'	
	217013	Floor Weldment – 4' x 12' Large Fork Pockets	
2	217014	Back Rail Weldment – 4' x 6'	1
	217016	Back Rail Weldment – 4' x 8'	
	217025	Back Rail Weldment – 4' x 9'8"	
	217017	Back Rail Weldment – 4' x 11'6"	
	217018	Back Rail Weldment – 4' x 12'	
3	217009	Front Rail Weldment – 4' x 6'	1
	217012	Front Rail Weldment – 4' x 8'	
	217026	Front Rail Weldment – 4' x 9'8"	
	217019	Front Rail Weldment – 4' x 11'6"	
	217021	Front Rail Weldment – 4' x 12'	
4	217028	Left Rail Weldment	1
5	217015	Right Rail Weldment	1
6	217031	Fork Pocket Shipping Block	2
7	217030	Forklift Tine Safety Pin and Chain Kit (Includes Items 9, 10, 12)	2
8	217010	Door Bottom Pin with Cotter Pin (Includes Items 8 and 9)	2
9	299523	R-Clip	4
10	217005	Rail Retaining Ring-Lock Pin	6
11	217024	Rail Pin Retaining Wire	6
12	299571	5/16" – 18 Hex Nut	4
13	299815	5/16" Lock Washer	4

## 6. Parts

### 6.2 Safety Decals



ITEM	PART NUMBER	DESCRIPTION	QTY
1	BD-060	Decal, Blue Diamond Attachments 2.4375" x 3.375"	2
2	BD-092	Decal, Warranty Registration QR Code 1.5" x 2.0"	1
3	BD-120	Decal, Fall Protection, OSHA, 4 Person, 2,000 lb Capacity	1
4	BD-121	Decal, All Rails, Door Pin, End Slots	1

## 7. Specifications

### 7.1 Attachment Specifications

MODEL	Size	Fork Pocket Width	Maximum Occupancy	Lift Capacity	Weight
117010	4' x 6'	Standard*	4	2,000 lbs	475 lbs
117015	4' x 8'	Standard	4		575 lbs
117016	4' x 8'	Large**	4		590 lbs
117020	4' x 9'8"	Standard	4		630 lbs
117021	4' x 9'8"	Large	4		650 lbs
117023	4' x 11'6"	Standard	4		725 lbs
117025	4' x 12'	Standard	4		755 lbs
117026	4' x 12'	Large	4		775 lbs

\*Standard fork pockets are 3" x 6" tubing, 1/8" wall.

\*\*Large fork pockets are 4" x 8" tubing, 3/16" wall.

## 7. Specifications

### 7.2 Torque Specifications

#### Standard Hardware and Lock Nuts

BOLT TYPE	SAE GRADE 5		SAE GRADE 8		LOCK NUTS			
	Nominal Size	Plated or Unplated Silver	Plated W/ ZnCr Gold	Plated or Unplated Silver	Plated W/ ZnCr Gold	Plated or Unplated Silver	Plated W/ ZnCr Gold	W/ Grade 5 Bolt
1/4	55 in / lb (6.2 N•m)	72 in / lb (8.1 N•m)	86 in / lb (9.7 N•m)	112 in / lb (12.6 N•m)	121 in / lb (13.6 N•m)	157 in / lb (17.7 N•m)	61 in / lb (6.9 N•m)	86 in / lb (9.8 N•m)
5/16	115 in / lb (13 N•m)	149 in / lb (17 N•m)	178 in / lb (20 N•m)	229 in / lb (26 N•m)	250 in / lb (28 N•m)	325 in / lb (37 N•m)	125 in / lb (14 N•m)	176 in / lb (20 N•m)
3/8	17 ft / lb (23 N•m)	22 ft / lb (30 N•m)	26 ft / lb (35 N•m)	34 ft / lb (46 N•m)	37 ft / lb (50 N•m)	48 ft / lb (65 N•m)	19 ft / lb (26 N•m)	26 ft / lb (35 N•m)
7/16	27 ft / lb (37 N•m)	35 ft / lb (47 N•m)	42 ft / lb (57 N•m)	54 ft / lb (73 N•m)	59 ft / lb (80 N•m)	77 ft / lb (104 N•m)	30 ft / lb (41 N•m)	42 ft / lb (57 N•m)
1/2	42 ft / lb (57 N•m)	54 ft / lb (73 N•m)	64 ft / lb (87 N•m)	83 ft / lb (113 N•m)	91 ft / lb (123 N•m)	117 ft / lb (159 N•m)	45 ft / lb (61 N•m)	64 ft / lb (88 N•m)
9/16	60 ft / lb (81 N•m)	77 ft / lb (104 N•m)	92 ft / lb (125 N•m)	120 ft / lb (163 N•m)	130 ft / lb (176 N•m)	169 ft / lb (229 N•m)	65 ft / lb (88 N•m)	92 ft / lb (125 N•m)
5/8	83 ft / lb (112 N•m)	107 ft / lb (145 N•m)	128 ft / lb (174 N•m)	165 ft / lb (224 N•m)	180 ft / lb (244 N•m)	233 ft / lb (316 N•m)	90 ft / lb (122 N•m)	127 ft / lb (172 N•m)
3/4	146 ft / lb (198 N•m)	189 ft / lb (256 N•m)	226 ft / lb (306 N•m)	293 ft / lb (397 N•m)	319 ft / lb (432 N•m)	413 ft / lb (560 N•m)	160 ft / lb (217 N•m)	226 ft / lb (306 N•m)
7/8	142 ft / lb (193 N•m)	183 ft / lb (248 N•m)	365 ft / lb (495 N•m)	473 ft / lb (641 N•m)	515 ft / lb (698 N•m)	667 ft / lb (904 N•m)	258 ft / lb (350 N•m)	364 ft / lb (494 N•m)
1	213 ft / lb (289 N•m)	275 ft / lb (373 N•m)	547 ft / lb (742 N•m)	708 ft / lb (960 N•m)	773 ft / lb (1048 N•m)	1000 ft / lb (1356 N•m)	386 ft / lb (523 N•m)	545 ft / lb (739 N•m)



## Warranty

### MANUFACTURER'S LIMITED WARRANTY

BLUE DIAMOND® ATTACHMENTS, a manufacturer of quality attachments, warrants new BLUE DIAMOND® ATTACHMENTS products and/or attachments at the time of delivery to the original purchaser, to be free from defects in material and workmanship when properly set up and operated in accordance with the recommendations set forth by BLUE DIAMOND® ATTACHMENTS, LLC.

BLUE DIAMOND® ATTACHMENTS liability for any defect with respect to accepted goods shall be limited to repairing the goods at a BLUE DIAMOND® ATTACHMENTS designated location or at an authorized dealer location, or replacing them, as BLUE DIAMOND® ATTACHMENTS shall elect. The above shall be in accordance with BLUE DIAMOND® ATTACHMENTS warranty adjustment policies. BLUE DIAMOND® ATTACHMENTS obligation shall terminate twelve (12) months for the Work Platform after the delivery of the goods to original purchaser.

This warranty shall not apply to any machine or attachment which shall have been repaired or altered outside the BLUE DIAMOND® ATTACHMENTS factory or authorized BLUE DIAMOND® ATTACHMENTS dealership or in any way so as in BLUE DIAMOND® ATTACHMENTS judgment, to affect its stability or reliability, nor which has been subject to misuse, negligence or accident beyond the company recommended machine rated capacity.

### WARRANTY CLAIM

To submit a warranty claim, a claim must be filed with BLUE DIAMOND® ATTACHMENTS before work is performed. The BLUE DIAMOND® PRODUCT SUPPORT TEAM will advise repairs and applicable parts exchanges. Tampering with the failed part may void the warranty. This warranty does not include freight or delivery charges incurred when returning machinery for servicing. Dealer mileage, service calls, and pickup/delivery charges are the customers' responsibility.

### EXCLUSIONS OF WARRANTY

Except as otherwise expressly stated herein, BLUE DIAMOND® ATTACHMENTS makes no representation or warranty of any kind, expressed or implied, AND MAKES NO WARRANTY OF MERCHANTABILITY IN RESPECT TO ITS MACHINERY AND/OR ATTACHMENTS ARE FIT FOR ANY PARTICULAR PURPOSE. BLUE DIAMOND® ATTACHMENTS shall not be liable for incidental or consequential damages for any breach or warranty, including but not limited to inconvenience, rental of replacement equipment, loss of profits or other commercial loss. Upon purchase, the buyer assumes all liability for all personal injury and property resulting from the handling, possession, or use of the goods by the buyer.

No agent, employee, or representative of BLUE DIAMOND® ATTACHMENTS has any authority to bind BLUE DIAMOND® ATTACHMENTS to any affirmation, representation, or warranty concerning its machinery and/or attachments except as specifically set forth herein.

This warranty policy supersedes any previous documents. Please see [bluediamondattachments.com/warranty-policies](http://bluediamondattachments.com/warranty-policies) for the most up to date warranty information.

**NOTE:** Blue Diamond® Attachments is a trademark of BLUE DIAMOND® ATTACHMENTS



**QUALITY | DEPENDABILITY | INTEGRITY**

Blue Diamond® Attachments  
4512 Anderson Road, Knoxville, TN 37918  
888-376-7027