

Silage Defacer

Operation and Maintenance Manual



Register your
WARRANTY
within 30 days
of purchase



888-376-7027 | BlueDiamondAttachments.com



BD-092

Introduction: Owner Information

Thank you for your decision to purchase a Blue Diamond Silage Defacer. To ensure maximum performance of your equipment, it is mandatory that you thoroughly study the Operator's manual and follow the recommendations. Proper operation and maintenance are essential to maximize equipment life and prevent personal injury.

Operate and maintain this equipment in a safe manner and in accordance with all applicable local, state, and federal codes, regulations and /or laws. Follow all on-product labeling and instructions.

Make sure that all personnel have read this Operator's Manual and thoroughly understand safe and correct operating, installation and maintenance procedures.

Blue Diamond is continually working to improve its products. Blue Diamond reserves the right to make any improvements or changes as deemed practical and possible without incurring any responsibility or obligation to make any changes or additions to equipment sold previously.

Although great care has been taken to ensure the accuracy of this publication, Blue Diamond makes no warranty or guarantee of any kind, written or expressed, implied or otherwise with regard to the information contained within this manual. Blue Diamond assumes no responsibility for any errors that may appear in this manual and shall not be liable under any circumstances for incidental, consequential or punitive damages in connection with, or arising from the use of this manual.

Keep this manual available for frequent reference. All new operators or owners must review the manual before using the equipment and annually thereafter. Contact your Blue Diamond Attachments Dealer for assistance, information, or additional copies of the manual. Contact www.bluediamondattachments.com or call 888-376-7027 for a complete list of dealers in your area.

Serial Number Location:

Please record attachment information in the space provided for future reference.

Model Number: _____

Serial Number: _____

Dealer Name: _____

Dealer Number: _____

Date of Purchase: _____

The serial number plate (is located on right side, just forward of the attachment mounting plate.

Always use your serial number when requesting information or when ordering parts.

NOTE: The directions left, right, front and rear, as mentioned throughout this manual, are as viewed from the operator's position.

Table of Contents

1. About this Manual	2
2. Safety	4
2.1 General Safety Information.....	5-6
3. Operation	7
3.1 General Information.....	7
3.2 Attachment Inspection.....	8
3.3 Attachment Installation.....	9-11
3.4 Operating the Attachment	11
3.5 Starting the Silage Defacer.....	12
4. Maintenance.....	13
4.1 Service Schedule	13
4.2 Lubrication.....	14
4.3 Drive Chain & Teeth.....	14
4.4 Cleaning the Attachment	15
4.5 Troubleshooting	16
5. Parts Breakdown	17
5.1 Chain Drive Weldment Components	17-18
5.2 Chain Drive Hardware Components	19
5.3 Chain Drive Exploded View.....	20
5.4 Direct Drive Exploded View	21
6. Warranty	22

2. Safety

2.1 General Safety Information



This **SAFETY ALERT SYMBOL** identifies important safety messages on the equipment and in the owner's manual. When you see this symbol, be alert to the possibility of personal injury and carefully read the message that follows.



The signal word **IMPORTANT** identifies procedures which must be followed to avoid damage to the machine.

Safe Operation Needs a Qualified Operator



The signal word **DANGER** on the machine and in the manuals indicates a hazardous situation which, if not avoided, will result in death or serious injury.



AVOID SERIOUS INJURY OR DEATH
Operators must receive instructions before operating the machine. Untrained operators can cause serious injury or death. For an operator to be qualified, he or she must not use drugs or alcoholic drinks which impair alertness or coordination while working. An operator who is taking prescription drugs must get medical advice to determine if he or she can safely operate a machine and the equipment.



The signal word **WARNING** on the machine and in the manuals indicates a potentially hazardous situation which, if not avoided, could result in death or serious injury.

Operator Training

- Check the rules and regulations at your location. The rules may include an employer's work safety requirements. Regulations may apply to local driving requirements or use of a Slow Moving Vehicle (SMV) emblem. Regulations may identify a hazard such as a utility line.
- The new operator must start in an area without bystanders and use all the controls until he or she can operate the machine safely under all conditions of the work area.



The signal word **CAUTION** on the machine and in the manuals indicates a potentially hazardous situation which, if not avoided, may result in minor or moderate injury. It may also be used to alert against unsafe practices.

2. Safety

2.1 General Safety Information

Importance of Safety

Operating Safety

- Read and follow instructions in this manual and the machine's Operator's Manual before operating.
- This equipment is dangerous to persons unfamiliar with its operation.
- Check for overhead and / or underground lines before operating equipment (if applicable).
- In addition to the design and configuration of equipment, hazard control and accident prevention are dependent upon the awareness, concern, prudence and proper training of personnel involved in the operation, transport, maintenance and storage of equipment.
- Check that the attachment is securely fastened to the machine.
- Make sure all the machine controls are in NEUTRAL before starting the machine.
- Operate the equipment only from the operator's position.
- Operate the equipment according to the Operator's Manual.
- When learning to operate the equipment, do it at a slow rate in an area clear of bystanders.
- DO NOT permit personnel to be in the work area when operating the equipment.
- The equipment must be used ONLY on approved machines.
- DO NOT modify the equipment in any way. Unauthorized modification may impair the function and / or safety and could affect the life of the equipment. Affect or void warranty too.
- DO NOT make any adjustments or repairs on the equipment while the machine is running.
- Keep shields and guards in place. Replace if damaged.
- DO NOT operate equipment in poor visibility conditions such as fog, darkness, or any conditions that limit clear visibility less than 300 feet (100 m) in front of and to the sides of the equipment.
- When conditions make it necessary to slow ground speed, shift to a lower gear rather than reducing engine speed. The engine will maintain rated speed and keep the power rake running at optimum speed.
- DO NOT operate in a work area that has not been inspected for foreign debris and obstacles.
- Remove any foreign objects and clearly mark any objects that cannot be removed.
- Wear safety glasses, gloves, hearing protection and other protective clothing when required.

Machine Requirements & Capabilities

- The machine's operator's cab should be equipped with a thermoplastic polycarbonate or similar material front window, and similar protection on the sides of the operator's cab before operating the equipment.
- Do Not exceed 3,000 psi (206.8 bar) operating pressure.
- Use caution on slopes and near banks and ditches to prevent overturn.

2. Safety

2.1 General Safety Information

Importance of Safety

Fire Prevention Safety

- Flammable debris (leaves, grass, etc.) must be removed regularly. If flammable debris is allowed to accumulate, it can cause a fire hazard. Clean often to avoid this accumulation.
- The equipment's hydraulic motor compartment must be inspected every day and cleaned if necessary to prevent fire hazards and overheating.
- All fuels, most lubricants and some coolant mixtures are flammable. Flammable fluids that are leaking or spilled onto hot surfaces or onto electrical components can cause a fire.

Transporting Safety

- Comply with state and local laws governing highway safety and movement of machinery on public roads.
- Check local laws for all highway lighting and marking requirements.
- Never allow riders on either machine or equipment.
- If transporting the attachment on a truck or trailer, make sure the it is properly secured to the transport vehicle.

Hydraulic System

- Check hydraulic tubes, hoses and fittings for damage and leakage. Never use open flame or bare skin to check for leaks. Hydraulic tubes and hoses must be properly routed and have adequate support and secure clamps. Tighten or replace any parts that show leakage.
- Always clean fluid spills. Do not use gasoline or diesel fuel for cleaning parts. Use commercial nonflammable solvents.

3. Operation

3.1 General Information

Pre-Operation Inspection

Before operating the Silage Defacer for the first time and each time thereafter, use the following list as a guideline during equipment inspection.



WARNING



AVOID SERIOUS INJURY OR DEATH

- Disengage machine's auxiliary hydraulics, engage the machine's parking brake, stop the engine and make sure all rotating components are completely stopped before connecting, disconnecting, adjusting or cleaning equipment.
- Always keep shields and all guards in place when using the equipment.
- Disengage machine's auxiliary hydraulics for road travel.
- Keep hands, feet and clothing away from rotating parts.

- Fully clean the attachment. See "Cleaning the Attachment" on page 15.
- Lubricate the attachment per the schedule outline in the Maintenance Section. See "Service Schedule" on page 13.
- Check the silage defacer mounting frame for damage or cracks.
- Check that all shields and guards are in place.
- Check for loose bolts and tighten them if necessary.
- Check the rotor and rotor teeth for wear or damage.
- Check all welds on the attachment for wear and damage each time the attachment is removed from the machine.

- Check for damaged or missing safety decals. Replace if necessary.
- Inspect the machine's mounting frame. (See the machine's Operator's Manual for inspecting the mounting frame). Replace any parts that are damaged, bent or missing. Keep all fasteners tight. Look for cracked welds.



WARNING



Leaking fluids under pressure can enter the skin and cause serious injury or death. Immediate medical attention is required. Wear goggles. Use cardboard to check for leaks.

- Check condition of all hydraulic components for leaks. Repair as required.

NOTE: Do not operate with hydraulic leaks.

- Verify that the silage defacer is properly connected to the machine.

3. Operation

3.2 Attachment Inspection

Daily Inspection

NOTE: Inspect the attachment by performing a walk around daily before and after use. Use the following inspection checklist as a guideline.

Check the following items every hours of operation:

- Verify that the silage defacer is properly connected to the machine.
- Check that all shields and guards are in place.
- Check hydraulic lines, connections and fittings for hydraulic oil leaks. Repair or replace damaged parts if necessary.
- Check the silage defacer mounting hardware for wear or damage. Inspect the pins and mount (on the attachment) for wear or damage. Repair or replace damaged parts if necessary.
- Check that the rotor turns freely

Weekly Inspection

Check the following items every 40 hours of operation:

- Check rotor and rotor teeth for wear or damage.
- Check all bolts for tightness.
- Inspect the silage defacer frame for cracks, bends, or damage.
- Check for debris build up between rotor and frame. Remove any debris build up.

Monthly Inspection

- Check the chain case oil.
- Check the drive chain tension.
- Check skid plates for wear.

- Check that all bolts are tight.
- Check rotor housing and rotor teeth for cracks or damage. Replace if necessary.
- Check mounting plate hardware.
- Check Silage Defacer frame, shields, guards. Repair if damaged or replace if necessary.
- Check for damaged or missing decals. Replace if necessary.
- Check for damaged or leaking hydraulic hoses or fittings. Replace if necessary.
- Lubricate as required.



WARNING



AVOID SERIOUS INJURY OR DEATH

Before servicing the attachment:

- **Always park on a flat level surface.**
- **Lower lift arms and place attachment flat on the ground.**
- **Place all controls in NEUTRAL.**
- **Engage the park brake.**
- **Wait for all moving parts to stop.**
- **Stop the engine and remove the key.**

SEE MACHINE'S OPERATOR'S MANUAL FOR ADDITIONAL INFORMATION.

3. Operation

3.3 Attachment Installation



IMPORTANT



SEE MACHINE'S OPERATOR'S MANUAL FOR DETAILED INFORMATION ON OPERATING THE LOADER.

Entering the Operator's Position

Use the attachment safety treads, handles and steps (on the machine) to enter the operator's position.

When in the operator's position, lower safety seat bar, fasten the seat belt, start the engine and release the parking brake.

Leaving the Operator's Position



WARNING



AVOID SERIOUS INJURY OR DEATH

Before servicing the attachment:

- **Always park on a flat level surface.**
- **Lower lift arms and place attachment flat on the ground.**
- **Place all controls in NEUTRAL.**
- **Engage the park brake.**
- **Wait for all moving parts to stop.**
- **Stop the engine and remove the key.**

SEE MACHINE'S OPERATOR'S MANUAL FOR ADDITIONAL INFORMATION.

Park the machine / attachment on a flat level surface. Place all controls in neutral, engage the park brake, stop the engine and wait for all moving parts to stop. Leave the operator's position.

Connecting Attachment to the Machine



WARNING



CRUSH HAZARD

- **Before moving the machine, look in all directions and make sure no bystanders, especially small children are in the work area. Do not allow anyone between the machine and attachment when approaching the attachment for connecting.**
- **Keep fingers and hands out of pinch points when connecting and disconnecting attachment.**

Inspect the Silage Defacer mounting flange and wedge mounts and all welds on the silage defacer for wear or damage each time the silage defacer is removed from the machine.

(See the machine's Operator's Manual for inspecting the mounting frame).

Enter the operator's position. See "Entering The Operator's Position" on page 9.

3. Operation

3.3 Attachment Installation

Connecting Attachment to the Machine (CONT.)

Drive the machine slowly forward, until the top edge of the machine's mounting plate is under the top flange of the attachment mounting frame.

Slowly tilt the machine's mounting plate back until the attachment mounting frame fully contacts the front of the machine's mounting plate.

Leave the operator's position. See "Leaving The Operator's Position" on page 9.



WARNING



AVOID SERIOUS INJURY OR DEATH

The locking pins / wedges must extend through the holes in the attachment mounting frame. Failure to secure locking pins / wedges can allow attachment to come off.

SEE MACHINE'S OPERATOR'S MANUAL FOR ADDITIONAL INFORMATION.

Engage attachment locking levers / wedges (See the machine's Operator's Manual for detailed information).

Connecting Hydraulic Hoses



IMPORTANT



- **Thoroughly clean the quick couplers before making connections. Dirt can damage the hydraulic system.**

Remove dirt or debris from the male and female couplers. Visually inspect the couplers for corroding, cracking, damage, or excessive wear.

Replace as needed.

Connect the attachment hydraulic hoses to the machine. Pull on each hose to verify full connection is made.

Disconnecting Hydraulic Hoses



WARNING



AVOID BURNS

Hydraulic fluid, tubes, fittings and quick couplers can get hot during operation. Be careful when connecting and disconnecting hydraulic hoses.

Relieve auxiliary hydraulic pressure. (See the machine's Operator's Manual for correct procedure.)

Disconnect attachment hydraulic hoses from the machine.

Disconnecting Attachment from the Machine

Relieve auxiliary hydraulic pressure. (See the machine's Operator's Manual for correct procedure.)

Park the machine and attachment on a flat level surface. Lower the attachment flat on the ground. Leave the operator's position. See "Leaving The Operator's Position" on page 9. Disconnect attachment hydraulic hoses from the machine.

Disengage locking pins / wedges. (See the machine's Operator's Manual for correct procedure.)

Enter the operator's position. See "Entering The Operator's Position" on page 9.

3. Operation

3.3 Attachment Installation

Disconnecting Attachment from the Machine (CONT.)

Slowly tilt the machine's mounting plate forward until the attachment mounting frame is free from the machine's mounting plate.

Drive the machine slowly backward, away from the attachment.

3.4 Operating the Attachment


Machine Requirements

- The machine must be equipped with a case drain.

Skid Steer Requirements

SILAGE DEFACER	GPM REQUIRED
132710	Up to 22 GPM
132712	22-40 GPM

Clearing Work Area

 **IMPORTANT** 

- **DO NOT operate in a work area that has not been cleared of foreign debris and obstacles.**
- **Rocks, metal, bunker walls and other objects can damage the Silage Defacer.**
- **Clearly mark any objects that cannot be removed.**

3. Operation

3.5 Starting the Silage Defacer

 **CAUTION** 

DO NOT exceed 3000 PSI (206.8 bar) operating pressure. Serious damage can result.



Install the Silage Defacer onto the machine.

Move to the operator's position, lower seat bar, start the engine and release the parking brake.

Raise the silage defacer slightly off the ground.

With the machine's engine RPM just above idle, engage the auxiliary hydraulic flow (see the machine's operator's manual) to the silage defacer

Slowly raise the machine's engine RPM to the correct and desired speed.

 **WARNING** 

Rotor Wrapping
Debris such as rope, wire, plastic etc. may wrap around rotor. STOP IMMEDIATELY and remove foreign material. Spinning of rotor and throwing of material may cause harm to operator/ bystander!

Stopping the Silage Defacer

Position the Silage Defacer slightly off the ground.

Set the machine's engine RPM to an idle, allow the silage defacer to slow down, disengage the auxiliary hydraulic flow (see the machine's operator's manual) to the silage defacer.

 **WARNING** 

AVOID SERIOUS INJURY OR DEATH

Before servicing the attachment:

- **Always park on a flat level surface.**
- **Lower lift arms and place attachment flat on the ground.**
- **Place all controls in NEUTRAL.**
- **Engage the park brake.**
- **Wait for all moving parts to stop.**
- **Stop the engine and remove the key.**

SEE MACHINE'S OPERATOR'S MANUAL FOR ADDITIONAL INFORMATION.

4. Maintenance

4.1 Service Schedule

Maintenance Intervals

DESCRIPTION	SERVICE PROCEDURES			
	Check	Clean	Lube	Change
Daily Maintenance (or every 8 hours)				
Hydraulic Fittings	•			
Hydraulic Hoses	•			
Hydraulic Motor	•	•		
Rotor Teeth (wear, damage and loosening)	•	•		
All Hardware	•			
Silage Defacer Frame	•	•		
Rotor Bearings	•	•	•	
Weekly Maintenance (or every 40 hours)				
Rotor Teeth (wear, damage, and loosening)	•			
Rotor (cracks or excessive wear)	•			
All Hardware	•			
Chain Case Oil (80-90W)	•			
Monthly Maintenance				
Drive Chain	•			
Rotor Teeth (wear, damage, and loosening)	•			
Rotor (cracks or excessive wear)	•			
All Hardware	•			
250 Hour Maintenance				
Chain Case Oil				•

4. Maintenance

4.2 Lubrication



AVOID SERIOUS INJURY OR DEATH

Before servicing the Silage Defacer:

- **Lower the machine's lift arms and place the power rake on flat, level surface.**
- **Engage parking brake, stop engine, remove the key and exit the machine.**
- **Disconnect attachment hydraulic hoses.**



AVOID SERIOUS INJURY OR DEATH

DO NOT work under the machine lift arms in the raised position without the lift arms being properly locked or blocked (see machine operator manual for more information.)



Fluid such as hydraulic fluid, coolants, grease, etc. must be disposed of in an environmentally safe manner. Some regulations require that certain spills and leaks on the ground must be cleaned in a specific manner. See local, state and federal regulations for the correct disposal.

Chain Case Oil

NOTE: The chain case oil should be changed after the first 100 hours or 30 days of operation and 250 hours thereafter.

4.3 Drive Chain & Teeth

Chain Tensioner

NOTE: The drive chain should be inspected monthly. New chain has a tendency to stretch.

Chain Removal

NOTE: Chain replacement requires draining the chain case oil.

Remove the chain case top and bottom covers.

Remove the master link and remove the chain and install new chain and master link.

Check for proper tension. Re-install bottom and top covers.

Fill chain case with oil.

Teeth

NOTE: If a tooth is damaged and needs to be replaced, cut and remove the damaged tooth and weld on the new tooth.

4. Maintenance

4.4 Cleaning the Attachment



DANGER



AVOID SERIOUS INJURY OR DEATH

Before servicing the Silage Defacer:

- **Lower the machine's lift arms and place the power rake on flat, level surface.**
- **Engage parking brake, stop engine, remove the key and exit the machine.**
- **Disconnect attachment hydraulic hoses.**



IMPORTANT



Rotor wrapping may cause damage to bearings or bearing seals by jamming/cutting causing premature wear and damage.



WARNING



AVOID SERIOUS INJURY OR DEATH

Securely block up the attachment before working underneath.



WARNING



Rotor Wrapping

Debris such as rope, wire, plastic etc. may wrap around rotor. STOP IMMEDIATELY and remove foreign material. Spinning of rotor and throwing of material may cause harm to operator/bystander!

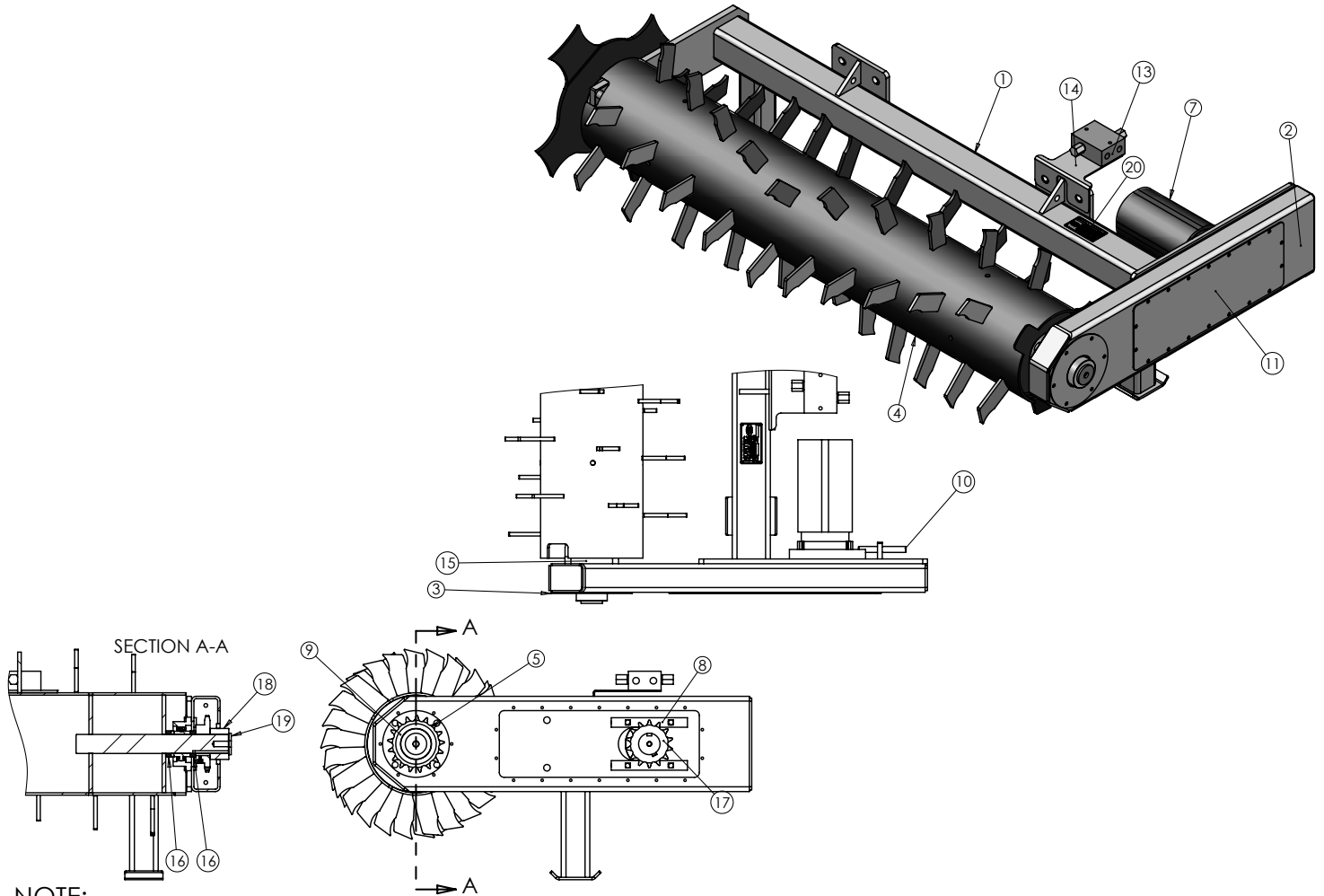
4. Maintenance

4.5 Troubleshooting

PROBLEM	CAUSE	SOLUTION
Silage Defacer Vibrating	Faulty rotor bearing	Replace bearing
Rotor NOT Turning	Broken chain	Replace chain
	Sheared key in sprocket or rotor	Replace key
	Bad hydraulic hose connection	Check hydraulic hose connections
	Damaged motor shaft or seized motor	Contact your dealer or Blue Diamond Attachments Service Department
	Faulty hydraulic coupler	Replace hydraulic coupler
	Hydraulics not engaged	Engage hydraulics
Low Pressure at Startup/Rotor Turning Slow	Hydraulic couplers are reversed	Reverse male and female. Check for correct pressure
	Faulty relief valve on silage defacer or machine	Contact Dealer or Blue Diamond® Attachments Service Department.
Noise in Chain Case	Chain and sprockets worn	Replace chain and sprockets
	Broken or stretched chain tensioner spring	Replace spring
	Idler worn	Replace idler
Chain Case Leaking	Faulty seal	Remove cover and replace seal

5. Parts Breakdown

5.1 132712 Chain Drive Weldment Components



NOTE:
1. FASTENERS NOT SHOWN

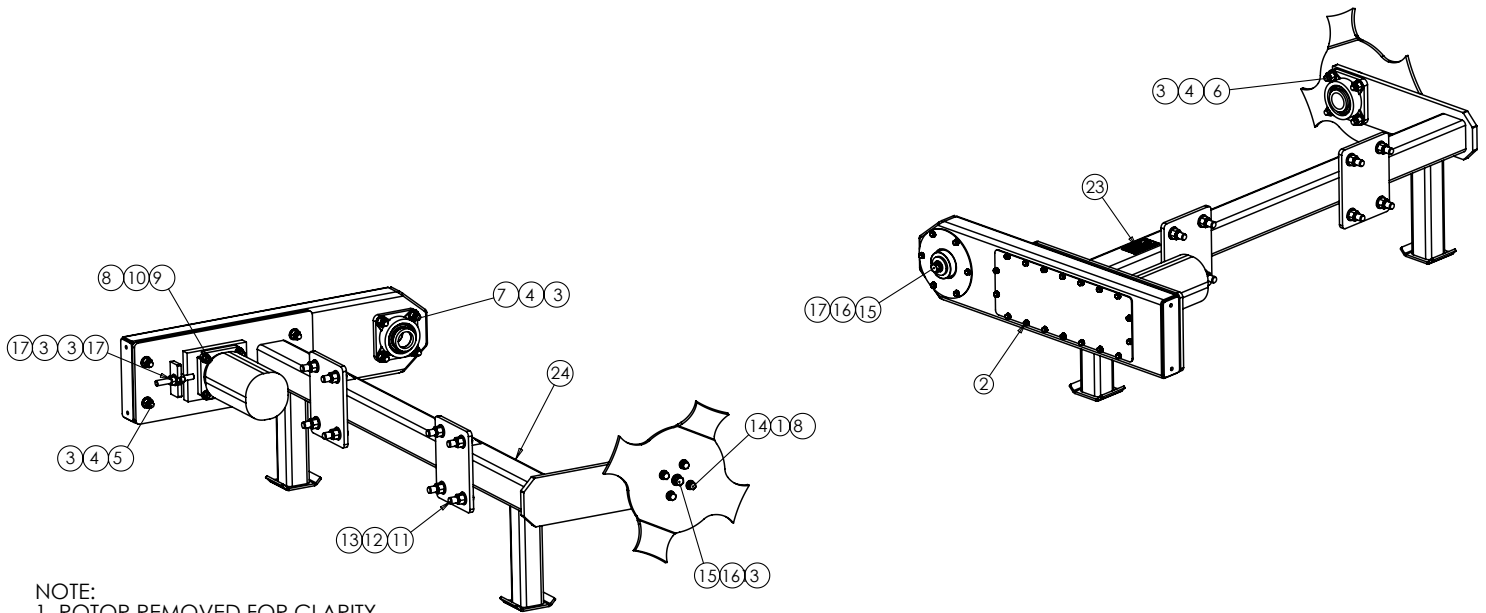
5. Parts Breakdown

5.1 132712 Chain Drive Weldment Components

ITEM	PART NUMBER	DESCRIPTION	QTY
1	232750	Frame 72"	1
	232787	Frame 84"	1
2	232751	Chain Case	1
3	232752	Cover, Front, Chain Case	1
4	232753	Rotor 72"	1
	232786	Rotor 84"	1
5	232754	#80 17 Tooth 2" Bore	1
6	232755	Flange, End Cutter Mount	2
7	232756	20.32" Rev. Motor	1
8	232757	Plate, Chain Tensioner	2
9	232758	Shaft Seal	1
10	232759	Motor Tensioner	1
11	232760	Cover, Center, Chain Case	1
12	232761	End Cutter	1
13	232762	Differential Poppet Relief Valve	1
14	232763	Bracket, Relief Valve	1
15	232764	Bearing, 4 Bolt Eccentric Flange	2
16	232765	Spacer, Bearing to Sprocket	2
17	232766	#80 14 Tooth 2.25" Bore	1
18	232768	Spacer, Non-End Cutter	1
19	232767	Washer, Non-End Cutter	1
20	-	Serial Plate	1

5. Parts Breakdown

5.2 132712 Chain Drive Hardware Components

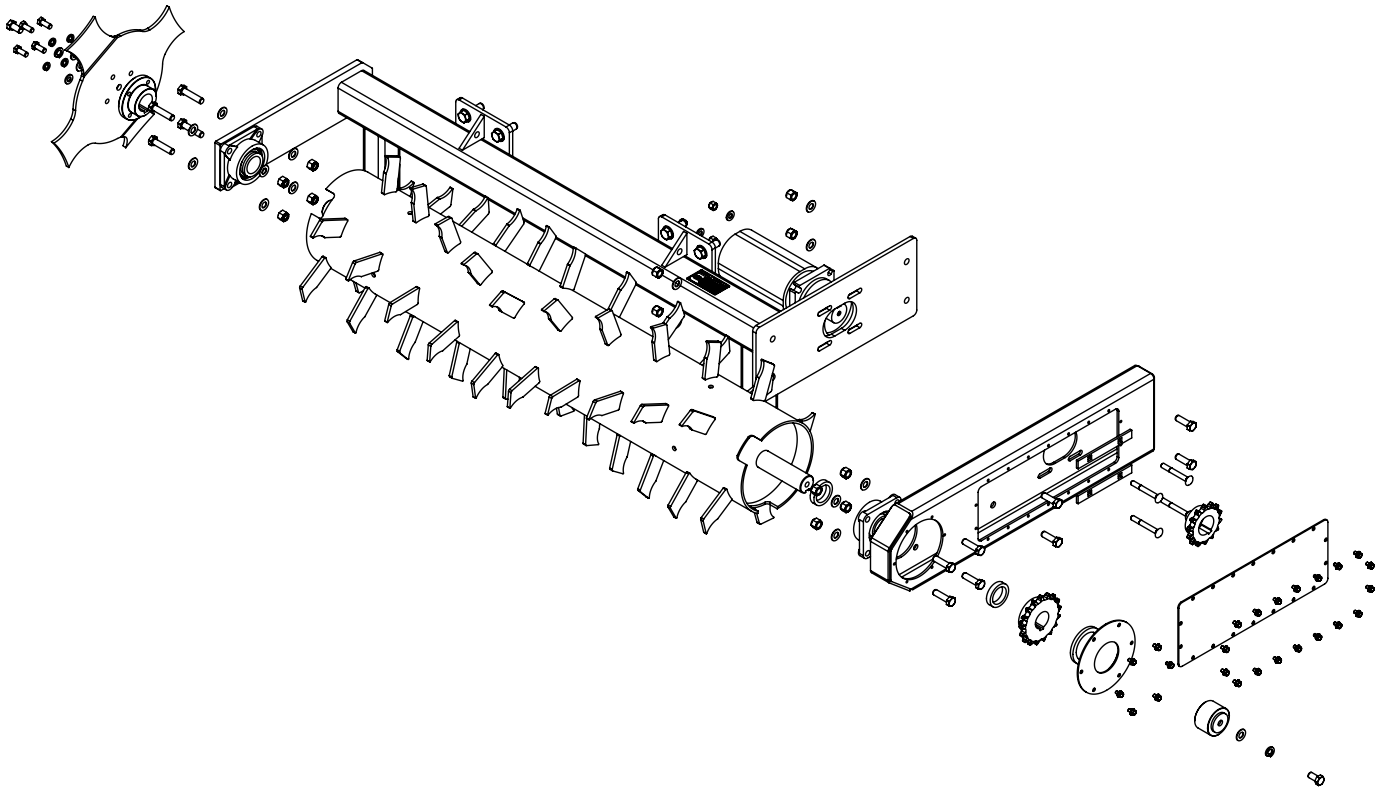


NOTE:
1. ROTOR REMOVED FOR CLARITY

ITEM	PART NUMBER	DESCRIPTION	QTY
1	299830	1/2" Split Lock Washer	4
2	299316	5/16"-18 x 0.50 LG Anti-Vibration HHCS	24
3	299844	5/8" SAE Washer	20
4	299627	5/8"-11 Nylock Nut	12
5	299465	5/8"-11 x 2.00 LG HHCS	4
6	299459	5/8"-11 x 2.75 LG HHCS	4
7	299471	5/8"-11 x 2.25 LG HHCS	4
8	299732	1/2" Flat Washer	8
9	299345	1/2"-13 x 3.75 Carriage Bolts	4
10	299618	1/2"-13 Nylock Nut	4
11	299466	3/4"-10 x 2.50 LG HHCS	8
12	299628	3/4"-10 Nylock Nut	8
13	299727	3/4" SAE Washer	16
14	299344	1/2"-13 x 1.25 LG HHCS	4
15	299472	5/8"-18x1.25 LG HHCS	2
16	299845	5/8" Split Lock Washer	2
17	299575	5/8"-11 Hex Nut	2
18	232764	Bearing, 4 Bolt Eccentric Flange	2
19	232765	Spacer, Bearing to Sprocket	2
20	232766	#80 14 Tooth 2.25" Bore	1
21	232768	Spacer, Non-End Cutter	1
22	232767	Washer, Non-End Cutter	1
23	-	Serial Plate	1

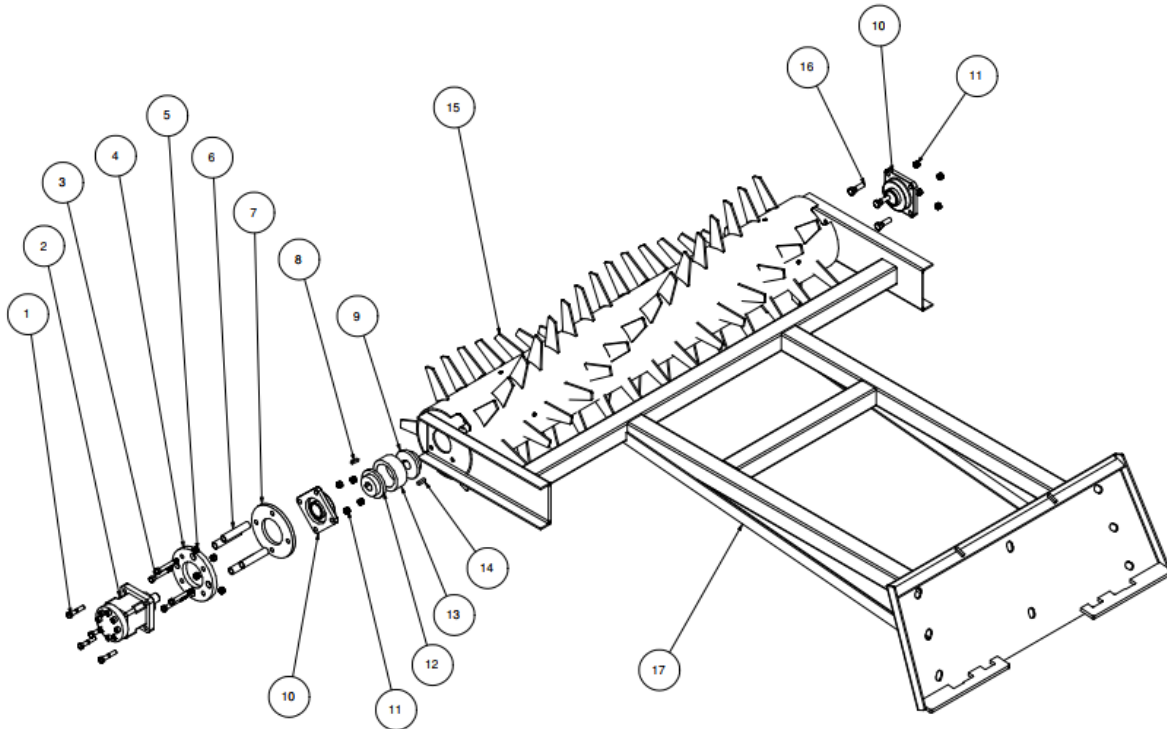
5. Parts Breakdown

5.3 132712 Chain Drive Exploded View



5. Parts Breakdown

5.4 132710 Direct Drive Exploded View



ITEM	PART NUMBER	DESCRIPTION	QTY
1	299474	Bolt, HCS 1/2-13 x 2 1/2 Zg	4
2	232769	Motor For Direct Drive Style (Old Models)	1
	232770	Motor For Direct Drive Style	1
3	299473	Bolt, HCS 5/8-11 x 7 1/2	4
4	232771	Motor Coupler	1
5	299618	Nut, Nylock 1/2-13	4
6	232772	Coupler, Tube	4
7	232773	Coupler, Bearing Washer	1
8	232774	Key .31 x 2.00 LG	1
9	232775	Sprocket #60 x 16T x 1 3/8 Bore	1
10	232776	2" 4 Bolt Flange Bearing	2
	232777	2" 4 Bolt Flange Bearing	2
11	299627	Nut Nylock 5/8-11	8
12	232778	Sprocket #60 x 16T x 1 1/4 Bore	1
13	232779	Chain #60-2 16 Links (Old Models)	1
	232780	Chain #60-2 16 Links	1
	232781	Master Link #60-2 Standard	1
14	232782	Key .38 x 1.25 LG	1
15	232783	Rotor 6'	1
16	299465	Bolt HCS 5/8-11 x 2"	4
17	232784	Frame 6 Ft Direct Drive Style	1
NS	232785	Replacement Skid Steer Plate Weldment	1



MANUFACTURER'S LIMITED WARRANTY

BLUE DIAMOND® ATTACHMENTS, a manufacturer of quality attachments, warrants new BLUE DIAMOND® ATTACHMENTS products and/or attachments at the time of delivery to the original purchaser, to be free from defects in material and workmanship when properly set up and operated in accordance with the recommendations set forth by BLUE DIAMOND® ATTACHMENTS, LLC.

BLUE DIAMOND® ATTACHMENTS liability for any defect with respect to accepted goods shall be limited to repairing the goods at a BLUE DIAMOND® ATTACHMENTS designated location or at an authorized dealer location, or replacing them, as BLUE DIAMOND® ATTACHMENTS shall elect. The above shall be in accordance with BLUE DIAMOND® ATTACHMENTS warranty adjustment policies. BLUE DIAMOND® ATTACHMENTS obligation shall terminate twelve (12) months for the Silage Defacer after the delivery of the goods to original purchaser.

This warrant shall not apply to any machine or attachment which shall have been repaired or altered outside the BLUE DIAMOND® ATTACHMENTS factory or authorized BLUE DIAMOND® ATTACHMENTS dealership or in any way so as in BLUE DIAMOND® ATTACHMENTS judgment, to affect its stability or reliability, nor which has been subject to misuse, negligence or accident beyond the company recommended machine rated capacity.

WARRANTY CLAIM

To submit a warranty claim, a return authorization from BLUE DIAMOND® ATTACHMENTS must be obtained. The failed part may then be returned. Tampering with the failed part may void the warranty. This warranty does not include freight or delivery charges incurred when returning machinery for servicing. Dealer mileage, service calls, and pickup/delivery charges are the customers' responsibility.

EXCLUSIONS OF WARRANTY

Except as otherwise expressly stated herein, BLUE DIAMOND® ATTACHMENTS makes no representation or warranty of any kind, expressed or implied, AND MAKES NO WARRANTY OF MERCHANTABILITY IN RESPECT TO ITS MACHINERY AND/OR ATTACHMENTS ARE FIT FOR ANY PARTICULAR PURPOSE. BLUE DIAMOND® ATTACHMENTS shall not be liable for incidental or consequential damages for any breach or warranty, including but not limited to inconvenience, rental of replacement equipment, loss of profits or other commercial loss. Upon purchase, the buyer assumes all liability for all personal injury and property resulting from the handling, possession, or use of the goods by the buyer.

No agent, employee, or representative of BLUE DIAMOND® ATTACHMENTS has any authority to bind BLUE DIAMOND® ATTACHMENTS to any affirmation, representation, or warranty concerning its machinery and/or attachments except as specifically set forth herein.

This warranty policy supersedes any previous documents.

NOTE: Blue Diamond® Attachments is a trademark of BLUE DIAMOND® ATTACHMENTS



QUALITY | DEPENDABILITY | INTEGRITY

Blue Diamond® Attachments
4512 Anderson Road, Knoxville, TN 37918
888-376-7027