



Blue Diamond
Pallet Forks
Operation and Maintenance Manual

Pallet forks

Publication Date: July 10 2008

Pallet forks

Document History

The table below lists all revisions of the Pallet forks Operation and Maintenance Manual.

Document Revision	Summary of Changes	Publication Date
First publication	First revision	8/27/2013

© 2008 Blue Diamond All Rights Reserved. 7/10/2008 Document number: **BD-Pallet forks-01**

Blue Diamond Attachments and the Blue Diamond logo are registered trademarks of BLUE DIAMOND ATTACHMENTS Equipment Inc. in the United States and/or in other countries.

All other brands, products, or service names are trademarks or service marks of their respective owners, and are used to identify products or services of their companies or organizations.

Notice: This document is for informational purposes only and does not set forth any warranty, expressed or implied, concerning any equipment, equipment feature, or service offered or to be offered by Blue Diamond or BLUE DIAMOND ATTACHMENTS Equipment Inc. Blue Diamond reserves the right to make changes to this document at any time, without notice, and assumes no responsibility for its use. This informational document describes features that may not be currently available. Contact a Blue Diamond sales office for information on feature and product availability.

Corporate Headquarters

Blue Diamond

6325 Central Ave. Pike
Knoxville, TN 37912

Toll Free: 888-376-7027

www.BlueDiamondattachments.com

Blue Diamond Customer Service Department

Email: info@bluediamondattachments.com

Phone: 888-376-7027

Pallet forks

Table of Contents

Document History.....	2
About this Manual	4
Hazard Notices Used in this Manual.....	4
Terminology.....	4
Safety.....	4
Safety Notices	4
Modifications to Equipment.....	4
About the Pallet fork attachment.....	5
4000lb Pallet forks.....	5
Attaching the Pallet forks.....	6
Pallet forks operation.....	7
Equipment Inspection Schedule	8
Daily Inspection	8
Weekly Inspection.....	8
Inspection Checklist.....	8
Detailed Parts List.....	9
Warning Decal Placement.....	10
Manufacturer's Limited Warranty	11
Warranty Claim.....	11
Exclusions of Warranty.....	11

Pallet forks

About this Manual

This manual contains information about the usage and maintenance required for the equipment. This document must be available for review by the operator before using the attachment to ensure proper safety, maintenance, and usage.

Hazard Notices Used in this Manual

The following hazard notices are used in this document:

NOTE: Notes are used to indicate important information. This information may be repeated in other areas of the manual.

CAUTION: Cautions are used to indicate a potentially hazardous situation, which, if not avoided, may result in damage to the equipment or other property.

WARNING: Warnings are used to indicate a potentially hazardous situation, which, if not avoided, could result in serious injury or death.

DANGER: Danger is used to indicate a potentially hazardous situation, which, if not avoided, will result in serious injury or death.

Terminology

Prime Mover: The Pallet forks can be attached to many different pieces of equipment; therefore, the term “prime mover” will be used. A prime mover is any equipment, tractor, or skid steer providing power to the attachment.

Safety

Safety Notices

Before operating or conducting maintenance on this equipment, it is important to wear proper protection.

NOTE: Additional safety equipment may be required depending on the operating environment and worksite conditions.

Only qualified and trained personnel should operate, maintain, and service this attachment. Blue Diamond recommends that you inspect this equipment regularly for excessive wear, cracks, or other conditions that may impair proper usage of the equipment. Verify that all repairs have been completed and inspected prior to using the attachment under load.

It is the responsibility of the user to follow all local, state, and federal safety regulations. Improper use of this equipment may result in personal injury, property damage, and/or damage to the equipment.

Modifications to Equipment

Any modifications made to this equipment may void any warranty and relieve the manufacturer of liability of any resulting injury or damage.

Pallet forks

About the Pallet forks Attachment

The Pallet forks attachment is intended for use as a tool to move pallets and carrying stable loads. Use of this equipment in any other manner is considered to be contrary to the intended use of the attachment.

Blue Diamond Duty Pallet forks

The Pallet forks attachment is vital in the landscaping, grounds maintenance, construction and farm applications. Easily adjustable tines and excellent visibility make the forks a great attachment.

Figure 1 – Blue Diamond Duty Pallet forks



Pallet forks

Attaching the Pallet forks to the Prime Mover

WARNING: Improper attachment to the prime mover may cause personal injury.

1. Place the Pallet forks attachment on a level surface.
2. Position and align the prime mover to the rear of the attachment, within proximity of the front of prime mover.
3. Insert and connect the prime mover into the attachment.
4. Close latches (or other locking mechanism) to secure the attachment to the prime mover.
5. Lower the attachment to ground level.
6. Inspect that the attachment is mounted properly and securely. If the attachment does not meet this requirement, follow the instructions to remove the Pallet forks and re-attach using the instructions above.

Removing the Pallet forks from the Prime Mover

WARNING: Improper disconnection may result personal injury or damage to the attachment and prime mover..



1. Using the prime mover, lower the attachment to the ground.
2. Disengage the prime mover latches (or other locking mechanism) from the attachment.
3. Move the prime mover from the attachment.

Pallet forks

Pallet forks Operation

- Wear proper safety equipment as required by working conditions and local, state, and Federal laws.
- Never carry more than the pallet forks are rated for.
- Know the weight of what you are lifting
- Never carry unstable loads
- Do not move loads you are not able to see around
- Position load evenly on the forks
- Never pry with the tips of the tines
- Always inspect frame and tines for wear and or cracks and discontinue use if found
- Never operate the Pallet forks with any guards removed.

DANGER: Never carry people

	<p>Eye and Ear Protection: To help ensure your safety as a designated operator wear eye and ear protection.</p>
	<p>Safety Helmet: To help ensure your safety as a designated operator wear a safety helmet.</p>

Pallet forks

Equipment Inspection Schedule

We recommend that you inspect the equipment for damage and wear before use. Use the following list as a guideline during equipment inspection.

NOTE: Shut off the prime mover and disengage the Pallet forks before performing any maintenance.

Daily Inspection

Inspect the Pallet forks by performing a walk around daily before and after use. Use the following inspection checklist as a guideline.

- After the Pallet forks have been attached, check that all latches or locks are closed.
- Check all hardware connections to the prime mover for damage or fatigue such as cracks or other structural flaws.
- Inspect the tines for cracks or distress
- Inspect the frame welds and fork channels for bending, cracks or excessive wear
- Check that all guards and safety equipment are in good condition.

Weekly Inspection

- Inspect the tines for excessive wear on the bottom
- Inspect latches on tines to be sure they are holding

Inspection Checklist

- Are all safety notices and warning stickers in proper locations and visible?
- Are any cracks visible in Pallet forks tines?
- Are the tines bent?
- Are the adjust latch pins free and working
- Is there any bends or cracks in the frame?
- Has the prime mover been properly maintained?

Pallet forks

Detailed Parts List

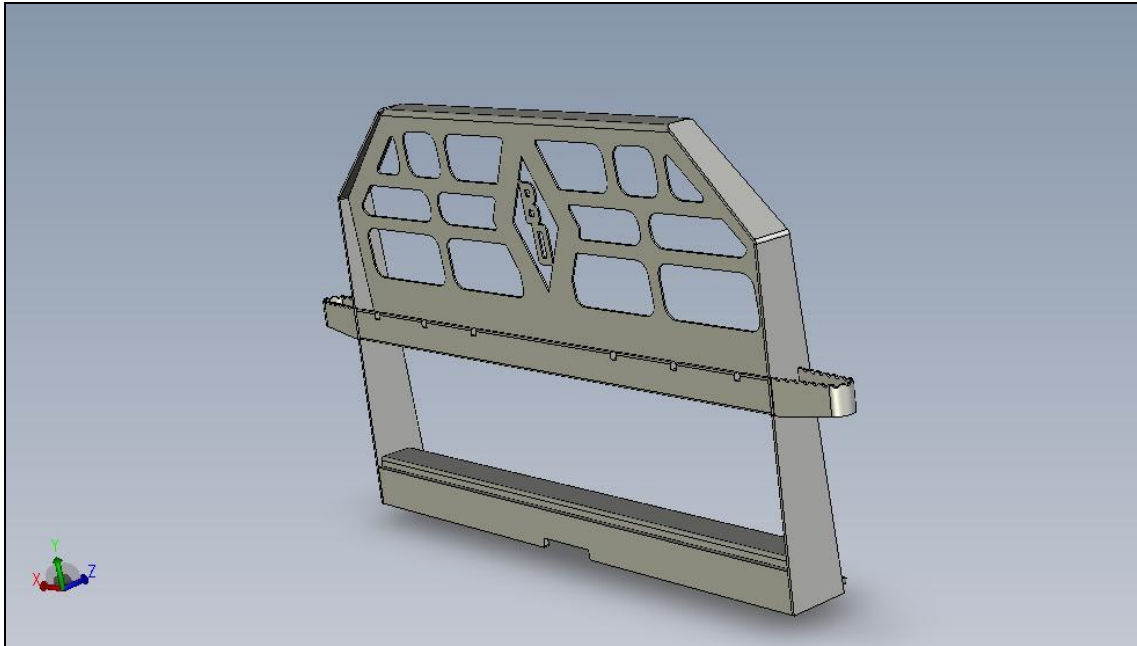


Figure 2 –

Table 1 - Parts List – Extreme Duty Pallet forks

AE14010- 4000lbs frame only

AE14011- 4000lbs frame with steps

AE14015- 4000lbs tines 48" X 1 1/2"

AE14016- 3000Lbs tines 42" X 1 1/4"


114003-25 "PALLET FORK FRAME ONLY, LOW PROFILE MINI"	1.00000
114120 "PALLET FORK TINE ONLY, 1 1/2" X 4" X 48" X 48" X 48" X 48"	2.00000

Pallet forks

Warning Decal Placement

Figure 3 – Pallet forks – Rear View

Table 2 - Parts List - Warning Decals

#	Part Name	Description	Part No.	Qty
1	Warning Decal	Read Owners Manual Before Operating	BD-02	1
		Warning Decal 1 		

Pallet forks

Manufacturer's Limited Warranty

BLUE DIAMOND ATTACHMENTS Equipment Inc. a manufacturer of quality attachments, warrants new BLUE DIAMOND ATTACHMENTS Equipment products and/or attachments at the time of delivery to the original purchaser, to be free from defects in material and workmanship when properly set up and operated in accordance with the recommendations set forth by BLUE DIAMOND ATTACHMENTS Equipment Inc

BLUE DIAMOND ATTACHMENTS Equipment's liability for any defect with respect to accepted goods shall be limited to repairing the goods at an BLUE DIAMOND ATTACHMENTS designated location or at an authorized dealer location, or replacing them, as BLUE DIAMOND ATTACHMENTS shall elect. The above shall be in accordance with BLUE DIAMOND ATTACHMENTS warranty adjustment policies. BLUE DIAMOND ATTACHMENTS Equipment's obligation shall terminate twelve (12) months for the Pallet forks after the delivery of the goods to original purchaser.

This warranty shall not apply to any machine or attachment which shall have been repaired or altered outside the BLUE DIAMOND ATTACHMENTS Equipment Inc factory or authorized BLUE DIAMOND ATTACHMENTS Equipment Inc dealership or in any way so as in BLUE DIAMOND ATTACHMENTS Equipment Inc judgment, to affect its stability or reliability, nor which has been subject to misuse, negligence or accident beyond the Company recommended machine rated capacity.

Warranty Claim

To submit a warranty claim, a return authorization from BLUE DIAMOND ATTACHMENTS Equipment Inc must be obtained. The failed part may then be returned. Tampering with the failed part may void the warranty. This warranty does not include freight or delivery charges incurred when returning machinery for servicing. Dealer mileage, service calls, and pickup/delivery charges are the customers' responsibility.

Exclusions of Warranty

Except as otherwise expressly stated herein, BLUE DIAMOND ATTACHMENTS Equipment Inc makes no representation or warranty of any kind, expressed or implied, AND MAKES NO WARRANTY OF MERCHANTABILITY IN RESPECT TO ITS MACHINERY AND/OR ATTACHMENTS ARE FIT FOR ANY PARTICULAR PURPOSE. BLUE DIAMOND ATTACHMENTS Equipment Inc shall not be liable for incidental or consequential damages for any breach or warranty, including but not limited to inconvenience, rental of replacement equipment, loss of profits or other commercial loss. Upon purchase, the buyer assumes all liability for all personal injury and property resulting from the handling, possession, or use of the goods by the buyer.

No agent, employee, or representative of BLUE DIAMOND ATTACHMENTS Equipment Inc has any authority to bind BLUE DIAMOND ATTACHMENTS Equipment Inc to any affirmation, representation, or warranty concerning its machinery and/or attachments except as specifically set forth herein.

This warranty policy supersedes any previous documents.

NOTE: Blue Diamond attachments is a trademark of BLUE DIAMOND ATTACHMENTS Equipment Inc

Pallet forks

Warranty Registration:

Please fill out this warranty registration within 30 days of the purchase of your attachment. It can be faxed to 865-246-2007 or emailed to:

info@bluediamondattachments.com

Name and address _____

Phone # _____

Attachment part # _____

Attachment serial # _____

Date purchased _____

Name of dealer attachment was purchased from:

Comments: _____



Blue Diamond Attachments, Knoxville TN
888-376-7027