

4-in-1 Bucket

Operation and Maintenance Manual



Register your
WARRANTY
within 30 days
of purchase



888-376-7027 | BlueDiamondAttachments.com



BD-092

Introduction: Owner Information

Thank you for your decision to purchase a Blue Diamond® 4-in-1 Bucket. To ensure maximum performance of your equipment, it is mandatory that you thoroughly study the Operator's Manual and follow the recommendations. Proper operation and maintenance are essential to maximize equipment life and prevent personal injury.

Operate and maintain this equipment in a safe manner and in accordance with all applicable local, state, and federal codes, regulations and / or laws. Follow all on-product labeling and instructions.

Make sure that all personnel have read this Operator's Manual and thoroughly understand safe and correct operating, installation and maintenance procedures.

Blue Diamond® is continually working to improve its products. Blue Diamond® reserves the right to make any improvements or changes as deemed practical and possible without incurring any responsibility or obligation to make any changes or additions to equipment sold previously.

Although great care has been taken to ensure the accuracy of this publication, Blue Diamond® makes no warranty or guarantee of any kind, written or expressed, implied or otherwise with regard to the information contained within this manual. Blue Diamond® assumes no responsibility for any errors that may appear in this manual and shall not be liable under any circumstances for incidental, consequential or punitive damages in connection with, or arising from the use of this manual.

Keep this manual available for frequent reference. All new operators or owners must review the manual before using the equipment and annually thereafter. Contact your Blue Diamond® Attachments Dealer for assistance, information, or additional copies of the manual. Contact www.bluediamondattachments.com or call 888-376-7027 for a complete list of dealers in your area.

Serial Number Location:

Please record attachment information in the space provided for future reference.



Model Number: _____

Serial Number: _____

Dealer Name: _____

Dealer Number: _____

Date of Purchase: _____

The serial number plate is located on the rear right side of the bucket as shown above.

Always use your serial number when requesting information or when ordering parts.

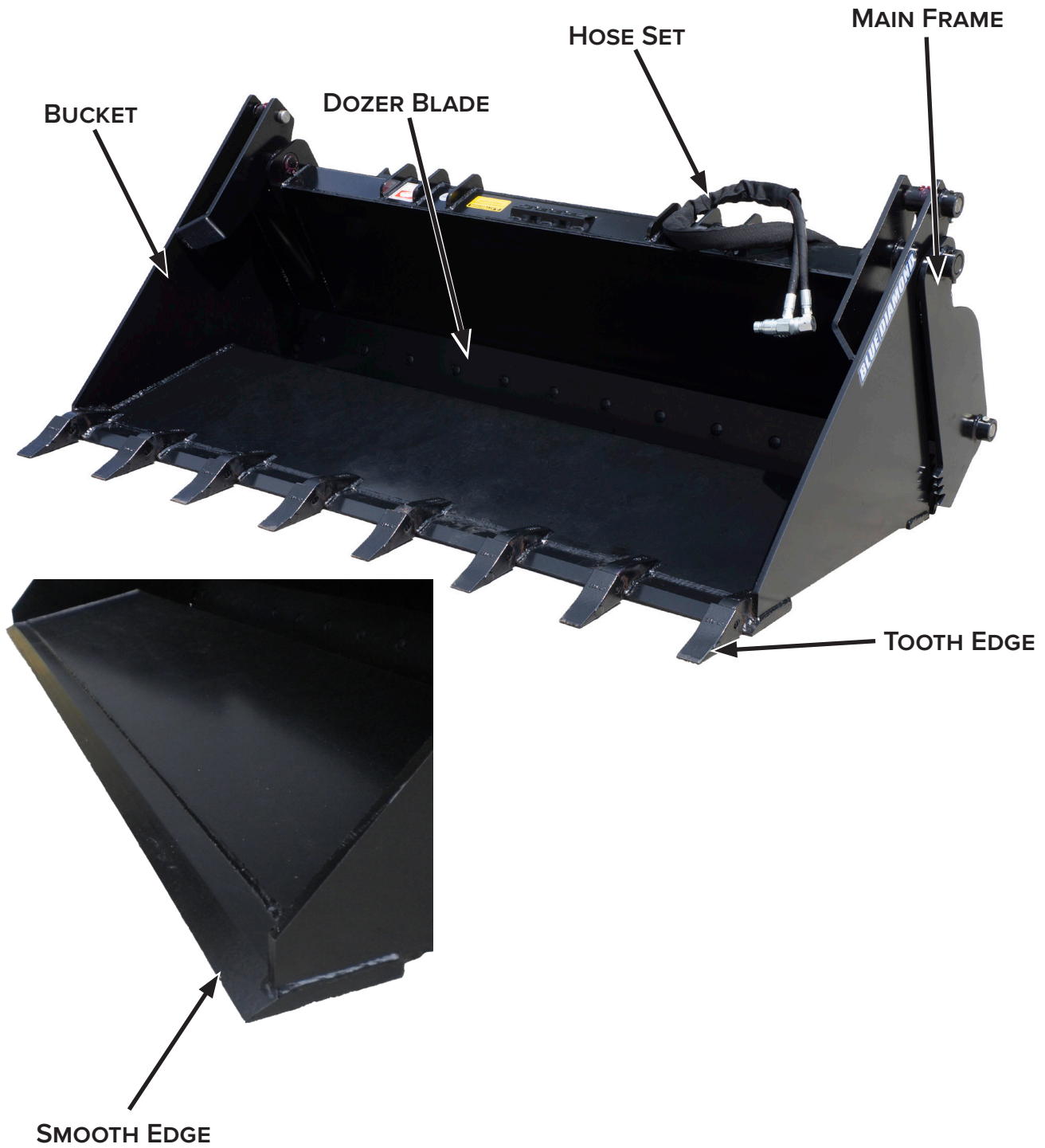
NOTE: The directions left, right, front, and rear, as mentioned throughout this manual, are as viewed from the operator's position.

Table of Contents

Introduction: Owner Information	2
1. Introduction.....	4
1.1 Attachment Identification	4
1.2 About this Attachment	5
2. Safety	6
2.1 General Safety Information	6
2.2 Operators	7
2.3 Safety Guidelines	8
3. Operation	10
3.1 Entering and Exiting the Prime Mover	10
3.2 Attachment Installation	10
3.3 Pre-Operation	12
3.4 Initial Setup	13
3.5 Operating the Attachment	13
3.6 After 1-5 Hours of Operation	14
3.7 Attachment Tips	14
4. Maintenance	15
4.1 Service Schedule	15
4.2 Before Every Use	16
4.4 After Every Season	16
4.5 Cutting Edge / Teeth Removal & Replacement	17
4.6 Lubrication	18
4.7 Troubleshooting	19
5. Parts.....	20
5.1 Mini Models – 36”, 42”, 48”, & 50”	20
5.2 Full Size Models – 60”, 66”, 72”, 78”, & 84”	23
5.3 Safety Decals	28
6. Specifications	29
6.1 Attachment Specifications	29
6.2 Torque Specifications	31
Warranty	33

1. Introduction

1.1 Attachment Identification



1. Introduction

1.2 About this Attachment

The Blue Diamond® Skid Steer 4-in-1 Bucket has set the standard with this durable attachment. It will make a skid steer or compact track loader into a versatile machine. It can be used as a grapple for moving logs or debris, push dirt with the blade like a dozer, dig with the bucket, or back drag with the open bucket like a box blade. It uses 2 powerful cylinders and can be greased on all pivot points.

1.3 Attachment Model Numbers

MODEL NUMBER	SKID STEER SIZE	WORKING WIDTH	EDGE TYPE
108755	Mini	36"	Smooth
108756	Mini	36"	Tooth
108760	Mini	42"	Smooth
108761	Mini	42"	Tooth
108765	Mini	48"	Smooth
108766	Mini	48"	Tooth
108770	Mini	50"	Smooth
108775	Full	60"	Smooth
108776	Full	60"	Tooth
108780	Full	66"	Smooth
108781	Full	66"	Tooth
108785	Full	72"	Smooth
108786	Full	72"	Tooth
108790	Full	78"	Smooth
108791	Full	78"	Tooth
108795	Full	84"	Smooth
108796	Full	84"	Tooth

Contact Blue Diamond® or your local dealer for other mount options.

2. Safety

2.1 General Safety Information



This **SAFETY ALERT SYMBOL** identifies important safety messages on the equipment and in the owner's manual. When you see this symbol, be alert to the possibility of personal injury and carefully read the message that follows.



The signal word **IMPORTANT** identifies procedures which must be followed to avoid damage to the machine.



The signal word **DANGER** on the machine and in the manuals indicates a hazardous situation which, if not avoided, will result in death or serious injury.



The signal word **WARNING** on the machine and in the manuals indicates a potentially hazardous situation which, if not avoided, could result in death or serious injury.



The signal word **CAUTION** on the machine and in the manuals indicates a potentially hazardous situation which, if not avoided, may result in minor or moderate injury. It may also be used to alert against unsafe practices.

NOTE: Notes are used to indicate important information. This information may be repeated in other areas of the manual.

Operating Safety

- Read and follow instructions in this manual and the machine's Operator's Manual before operating.
- The manual must always remain with the machine. In case of loss or damage, request a new copy from your dealer or from Blue Diamond®.
- Strictly follow all rules prescribed by the safety pictograms/decals applied to the machine. Ensure that all safety pictograms/decals are legible. If pictograms/decals are worn, they must be replaced with new ones obtained from Blue Diamond® and placed in the position indicated by this manual.
- Before using the machine, make sure that all safety devices are installed and in good working condition. In case of damaged or missing shields, replace them immediately.
- It is absolutely forbidden to remove or alter safety devices and/or safety precautions
- Pay maximum attention to avoid any accidental contact with rotating parts of the machine.
- If the use of the machine is required at night or in conditions of reduced visibility, use the lighting system of the prime mover and an auxiliary lighting system if required.

2. Safety



2.2 Operators

Qualified Operators

The operator is a person suited to the work and who is physically and psychologically able to withstand the demands connected with operating the equipment for its intended use. The operator must not allow anyone to approach the machine while it is working and must not allow external personnel to operate the machine or attachment.

The operator is to follow the given instructions in this manual and the machine operator's manual in order to obtain maximum performance, minimal fuel consumption, and maximum safety for themselves and for others.

The operator is responsible for scrupulously observing all the instructions given in this manual.

 **DANGER** 

AVOID SERIOUS INJURY OR DEATH

Operators must receive instructions before operating the machine. Untrained operators can cause serious injury or death.

For an operator to be qualified, he or she must not use drugs or alcoholic drinks which impair alertness or coordination while working. An operator who is taking prescription drugs must get medical advice to determine if he or she can safely operate a machine and the equipment.

For an operator to be qualified, he or she must have read and understood the instructions of this manual, he or she must make adequate preparation for the proper use of the machine, and he or she must hold a driving license.

In case of doubt regarding the use of the machine and/or the interpretation of this manual, the operator must contact either their dealer or Blue Diamond®.

Operator Training

- Check the rules and regulations at your location. The rules may include an employer's work safety requirements. Regulations may apply to local driving requirements or use of a Slow Moving Vehicle (SMV) emblem. Regulations may identify a hazard such as a utility line.
- The new operator must start in an area without bystanders and use all the controls until he or she can operate the machine safely under all conditions of the work area.

Operator Safety

- Before starting and during operation of the attachment, make sure there are no people or animals in the operation area.
- During operation, adjustment, maintenance, repairing, or transportation of the machine, the operator must always use appropriate Personal Protective Equipment (PPE) including but not limited to safety glasses, working gloves, dust-mask, safety helmet, and hearing protection.
- Do not operate the attachment or machine while wearing loose fitting clothing that can be entangled or caught in parts of the machine.
- Do not operate the implement when tired, not in good condition, or under the influence of alcohol or drugs.

2. Safety

2.3 Safety Guidelines

Operating Safety

- Read and follow instructions in this manual and the machine's Operator's Manual before operating.
- Under no circumstances should young children be allowed to work with this equipment.
- This equipment is dangerous to persons unfamiliar with its operation.
- Check for overhead and / or underground lines before operating equipment.
- In addition to the design and configuration of equipment, hazard control and accident prevention are dependent upon the awareness, concern, prudence, and proper training of personnel involved in the operation, transport, maintenance, and storage of the equipment.
- Check that the attachment is securely fastened to the machine.
- Make sure all the machine controls are in the NEUTRAL before starting the machine.
- Operate the equipment only from the operator's position.
- Operate the equipment according to the Operator's Manual.
- When learning to operate the equipment, do it at a slow rate in an area clear of bystanders.
- DO NOT permit personnel to be in the work area when operating the equipment.
- The equipment must be used ONLY on approved machines.
- DO NOT modify the equipment in any way. Unauthorized modification may impair the function and / or safety and could affect the life of the equipment.
- DO NOT make any adjustments or repairs on the equipment while the machine is running.
- DO NOT operate equipment in poor visibility conditions such as fog, darkness, or any conditions that limit clear visibility less than 300 feet (100 m) in front of and to the sides of the equipment.
- When conditions make it necessary to slow ground speed, shift to a lower gear rather than reducing engine speed. The engine will maintain rated speed and keep cutter running at optimum cutting speed.
- DO NOT operate in a work area that has not been inspected for foreign debris and obstacles.
- Remove any foreign objects and clearly mark any objects that cannot be removed.
- Wear safety glasses, gloves, hearing protection, and other protective clothing when required.

Machine Requirements and Capabilities

- Keep bystanders clear of moving parts and the work area. Keep children away.
- Use caution on slopes and near banks and ditches to prevent overturn.
- The prime mover must have adequate horsepower and weight to provide satisfactory results.
- The prime mover must be equipped with an auxiliary circuit that is available on the loader arms and is controlled by a switch, pedal, or handle inside the machine's cab.
- The prime mover must be in good working condition before operating.

2. Safety

2.3 Safety Guidelines Cont'd

Fire Prevention Safety

- The equipment's hydraulic motor compartment must be inspected every day and cleaned if necessary to prevent fire hazards and overheating.
- All fuels, most lubricants, and some coolant mixtures are flammable. Flammable fluids that are leaking or spilled onto hot surfaces or onto electrical components can cause a fire.

Transporting Safety

- Comply with state and local laws governing highway safety and movement of machinery on public roads.
- Check local laws for all highway lighting and marking requirements.
- Always yield to oncoming traffic, and move to the side of the road so any following traffic may pass.
- Never allow riders on either machine or equipment.
- If transporting the equipment on a truck or trailer, make sure the equipment is properly secured to the transport vehicle.

Hydraulic System

- Check hydraulic tubes, hoses, and fittings for damage and leakage. Never use open flame or bare skin to check for leaks. Hydraulic tubes and hoses must be properly routed and have adequate support and secure clamps. Tighten or replace any parts that show leakage.
- Always clean fluid spills. Do not use gasoline or diesel fuel for cleaning parts. Use commercial nonflammable solvents.

Personal Protective Equipment



Proper Work Clothes: To help ensure your safety as a designated operator wear proper work clothes including tight fitting clothes, protective gloves and shoes.



Hand Protection: To help ensure your safety as a designated operator wear protective gloves.



Protective Shoes: To help ensure your safety as a designated operator wear protective shoes.



Safety Helmet: To help ensure your safety as a designated operator wear a safety helmet.



Safety Helmet and Eye/Ear Protection: To help ensure your safety as a designated operator wear a safety helmet and eye/ear protection.

3. Operation

3.1 Entering and Exiting the Prime Mover



See the machine's Operator's Manual for detailed information on operating the loader.

Entering The Operator's Position

Use the attachment safety treads, handles and steps (on the machine) to enter the operator's position.

When in the operator's position, fasten the seatbelt, lower safety seat bar, start the engine, and release the parking brake.

Leaving The Operator's Position



AVOID SERIOUS INJURY OR DEATH

- Always park on a flat, level surface.
- Lower lift arms and place attachment flat on the ground.
- Place all controls in NEUTRAL.
- Engage the park brake.
- Stop the engine, and remove the key.
- Wait for all moving parts to stop.

SEE MACHINE'S OPERATOR'S MANUAL FOR ADDITIONAL INFORMATION.

Park the machine / attachment on a flat, level surface.

Place all controls in neutral, engage the parking brake, stop the engine, and wait for all moving parts to stop. Leave the operator's position.

3.2 Attachment Installation

Connecting Attachment To The Machine



CRUSH HAZARD

- Before moving the machine, look in all directions and make sure no bystanders, especially small children are in the work area. Do not allow anyone between the machine and attachment when approaching the attachment for connecting.
- Keep fingers and hands out of pinch points when connecting and disconnecting the attachment.

Before connecting to the attachment, inspect the machine's mounting plate. (See the machine's Operator's Manual for inspecting the mounting frame).

Enter the operator's position. See "Entering the Operator's Position" on page 10.

Drive the machine slowly forward, until the top edge of the machine's mounting plate is under the top flange of the attachment mounting frame.

Slowly tilt the machine's mounting plate back until the attachment mounting frame fully contacts the front of the machine's mounting plate.

Leave the operator's position. See "Leaving the Operator's Position" on page 10.

3. Operation

3.2 Attachment Installation Cont'd

Connecting Attachment to the Machine Cont'd

Slowly tilt the machine's mounting plate back until the attachment mounting frame fully contacts the front of the machine's mounting plate.

Leave the Operator's position. See "Leaving the Operator's Position" on page 10.



WARNING



AVOID SERIOUS INJURY OR DEATH

The locking pins / wedges must extend through the holes in the attachment mounting frame. Failure to secure locking pins / wedges can allow attachment to come off.

**SEE MACHINE'S OPERATOR'S MANUAL FOR
ADDITIONAL INFORMATION.**

Engage attachment locking levers / wedges (See the machine's Operator's Manual for detailed information).

Connecting Hydraulic Hoses



IMPORTANT



Thoroughly clean the quick couplers before making connections. Dirt can quickly damage the hydraulic system.

Remove dirt or debris from the male and female couplers. Visually inspect the couplers for corroding, cracking, damage, or excessive wear. Replace as needed.

Connect the attachment hydraulic hoses to the machine. Pull on each hose to verify full connection is made.

Disconnecting Hydraulic Hoses



WARNING



AVOID SERIOUS INJURY OR DEATH

Hydraulic fluid, tubes, fittings, and quick couplers can get hot during operation. Be careful when connecting and disconnecting hydraulic hoses.

Relieve auxiliary hydraulic pressure. (See the machine's Operator's Manual for correct procedure.)

Disconnect attachment hydraulic hoses from the machine.

Disconnecting Attachment From the Machine

Relieve auxiliary hydraulic pressure. (See the machine's Operator's Manual for correct procedure.)

Park the machine and attachment on a flat level surface. Lower the attachment flat on the ground.

Leave the operator's position. See "Leaving the Operator's Position" on page 10.

Disconnect attachment hydraulic hoses from the machine.

Disengage locking pins / wedges. (See the machine's Operator's Manual for correct procedure.)

Enter the operator's position. See "Entering the Operator's Position" on page 10.

Slowly tilt the machine's mounting plate forward until the attachment mounting frame is free from the machine's mounting plate.

Drive the machine slowly backward, away from the attachment.



3. Operation


3.3 Pre-Operation

Equipment Inspection

It is recommended to inspect the equipment for damage and wear before use. Use the following list as a guideline during equipment inspection:

- Check all hardware connections to the prime mover for damage or fatigue, such as cracks or other structural flaws.
- Check that all latches or locks are closed.
- Check that all hydraulic fittings are tight and free of leaks.
- Check that all hydraulic lines are free of leaks, holes, or cracks.

 **WARNING** 



Leaking fluids under pressure can enter the skin and cause serious injury or death. Immediate medical attention is required.

Wear goggles. Use cardboard to check for leaks.

- Check that the prime mover is in good working condition.
- Check for loose bolts and other hardware, and tighten them if necessary.
- Check that all safety decals are in place and can be read. Replace them if necessary.

NOTE: Replace any damaged hardware, hoses, and fittings before using the equipment.

Usage Guidelines

Before each use, perform the following:

- Perform an inspection before each use.
- Inspect the attachment by performing a walk around.
- Use the 4-in-1 Bucket for materials handling only.
- Inspect the 4-in-1 Bucket after severe use or damage.

 **DANGER** 

AVOID SERIOUS INJURY OR DEATH

Keep all body parts away from the 4-in-1 Bucket when in use. The tines may open or close unexpectedly, causing serious injury or death.

Attachment Controls

The 4-in-1 Bucket is designed to run off the skid steer loader auxiliary hydraulic system.

Height and tilt functions of the attachment are operated with the control handles or pedals in the cab. Consult the machine's Operator's Manual for precise instructions regarding these functions.

The machine may have a "float" function on the lowering circuit. When placed in the "float" position, the attachment will follow the contour of the ground. See the machine's Operator's Manual for precise instructions regarding how to operate the "float" function.

During initial startup, if the hydraulic function operates in the opposite direction preferred, change the position of the quick disconnect couplers on the attachment hoses to fix this problem.

3. Operation

3.4 Initial Setup



WARNING



AVOID SERIOUS INJURY OR DEATH

Moving the attachment with bystanders in the area could result in serious injury or death. Before moving the attachment / machine, always make sure the area is clear of bystanders.



IMPORTANT



Check the skid steer's hydraulic oil level and add oil, if necessary, before and after doing steps 1 and 2.

Enter the operator's position (see "Entering the Operator's Position" page 10).

Lift the attachment 10" (254 mm) off the ground.

With the skid steer engine RPMs just above idle, slowly engage the auxiliary hydraulic flow to the tines until the bucket is fully opened. Reverse the direction of the flow until the bucket is fully closed. Repeat this two or more times to purge any air from the system.

Lower the attachment to the ground and shut off the skid steer's engine. Exit the operator's position (see "Leaving the Operator's Position" page 10).

Check the skid steer's hydraulic oil level, and add oil if necessary.

Inspect the attachment's hydraulic plumbing for any noticeable leaks. Correct these leaks before continuing.

3.5 Operating the Attachment



WARNING



CRUSH HAZARD

Never allow any person in between the clamp when the attachment is in operation or not in operation.



CAUTION



AVOID INJURY

Practice caution when operating on uneven ground. A machine rollover could result in injury. Always wear your seatbelt when operating this type of machinery.

The 4-in-1 Bucket has operate as a bucket, a clamshell grapple, and a dozer blade. It is also equipped for back dragging.

1. Using the auxiliary hydraulic flow, open the bucket.
2. With the bucket open, the operator can reverse the prime mover and use the bucket to back drag material, the operator can move the prime mover forward and use the dozer blade to grade material, and the operator can move the attachment to where objects can fit in the opening to be used as a clamshell grapple.

NOTE: Make sure to center the load being carried when using the attachment as a clamshell grapple. If the load feels unbalanced when lifted, reposition the load.

3. Reverse the auxiliary hydraulic flow to close the bucket to have it either function as a bucket again or clamp onto the material placed in the opening when the bucket was open.

3. Operation

3.6 After 1–5 Hours of

Operation

- Check all hardware. Tighten to their specified torque if necessary.
- Check hydraulic system for leaks. Tighten or replace if necessary.
- Check the prime mover's hydraulic oil reservoir level. Fill if necessary.
- Check for entangled material. Remove before resuming work.
- Lubricate all pivot joints with grease.

3.7 Attachment Tips

- Always inspect the work area before using the attachment. Locate and mark any utilities, steel posts, rocks, or any other objects that could be damaged or would damage the attachment during operation.
- Operate at a safe, slow pace speed that will allow you to observe the area surrounding the attachment and prime mover.
- Avoid overloading the 4-in-1 Bucket.
- Center the load being carried by the attachment. Estimate the load's center, and pick it up accordingly.

4. Maintenance

4.1 Service Schedule

DESCRIPTION	SERVICE PROCEDURES					
	Check	Clean	Lube	Change	Adjust	Drain
Daily Maintenance (or every 8 hours)						
Hydraulic Fittings	•					
Hydraulic Hoses	•					
All Hardware	•					
Safety Decals	•					
Grease Points			•			
Weekly Maintenance (or every 40 hours)						
Frame (cracks, bends, or damage)	•					
Seasonal Maintenance						
All Hardware	•				•	
Repaint	•			•		
Safety Decals	•			•		

4. Maintenance

Before carrying out any maintenance operations, the operator must carefully read and understand the instructions contained in this manual.

Regular and thorough maintenance keeps the machine in optimal condition and prolongs its service life.



WARNING



AVOID SERIOUS INJURY OR DEATH

- Always park on a flat, level surface.
- Lower lift arms and place attachment flat on the ground.
- Place all controls in NEUTRAL.
- Engage the park brake.
- Stop the engine, and remove the key.
- Wait for all moving parts to stop.

SEE MACHINE'S OPERATOR'S MANUAL FOR ADDITIONAL INFORMATION.



IMPORTANT



Always release the hydraulic system pressure from the hydraulic circuits prior to removing the attachment or any hydraulic system service work.

4.2 Before Every Use

Check that all fasteners (nuts, bolts, pins, keepers, etc.) are in their right place and are tight.

Inspect and replace any worn, torn, or missing safety decals.

Investigate the location of any oil leaks. Repair if needed.

Lubricate all grease points as shown in Figure 1 on page 18.

4.3 Every Week

Check the condition of the frame. Repair if necessary.

Check the condition of the cutting edge and / or tooth points (if equipped). Contact Blue Diamond® Product Support to order replacements for the cutting edge or teeth as soon as they become worn.

4.4 After Every Season

Inspect the attachment for any loose or worn parts that may need to be replaced prior to the next season.

Inspect the cutting edge or teeth (if equipped). Replace if necessary.

Clean and repaint any area that looks worn or scratched to prevent further rusting. Use an equipment paint found at a local hardware store.

Replace any safety decals that have been lost or damaged.

Store the attachment in a shed or cover with a waterproof tarp to protect it from the weather.

Do not store in an area frequented by children.

4. Maintenance

4.5 Cutting Edge / Teeth

Removal & Replacement



WARNING



AVOID SERIOUS INJURY OR DEATH

To avoid serious injury or death, do not go underneath any part of an unsupported blade or frame when servicing this attachment.



CAUTION



AVOID INJURY

Cutting edges can be very heavy and could cause minor or serious injury if mishandled. Always wear protective gloves and footwear.

Bolt-On Cutting Edge

Make sure to park on a flat, level surface and that the attachment is securely supported by blocks and not by the hydraulic system itself. Engage the parking brake, and turn off the engine.

1. Remove any debris around the bolt area.
2. Identify the bolt size. Using the appropriate wrench or socket, loosen and remove the bolts.
3. Remove the worn cutting edge.
4. Clean the bolt holes, removing any dirt, rust, and / or debris.
5. Place the new cutting edge onto the bucket. Align the holes of the edge with the holes of the bucket.
6. Insert a new bolt and nut into each of the holes, and torque per the chart on page 33.

Tooth

Make sure to park on a flat, level surface and that the attachment is securely supported by blocks and not by the hydraulic system itself. Engage the parking brake, and turn off the engine.

1. Remove any debris around the tooth area.
2. Access the retaining pin that is holding the tooth in place by using a pin removal tool or punch.
3. Using a hammer, remove the pin from the tooth and the shank.
4. Once the pin is removed, slide the worn tooth off of the shank.
5. Clean the shank using a wire brush, removing dirt, rust, and / or debris.
6. Slide the new tooth onto the shank, making sure the tooth's retainer aligns with the recess on the shank.
7. Insert the retaining pin through the hole on the tooth and the shank. Make sure they are still aligned.
8. Firmly hammer the pin until it is flush with the tooth to lock the new tooth into place.

4. Maintenance

4.6 Lubrication

There are six (6) grease points on the log grapples. See Figure 1 for each location. The attachment does not need disassembled for greasing.

Ensure that the machine is turned off during service and that the lift arms with lockout braces are supported if the arms are lifted. Grease every 8 hours of use.

Lubrication Points:

1. Top of left cylinder
2. Bottom of the left cylinder
3. Left pivot point
4. Top of the right cylinder
5. Bottom of the right cylinder
6. Right pivot point

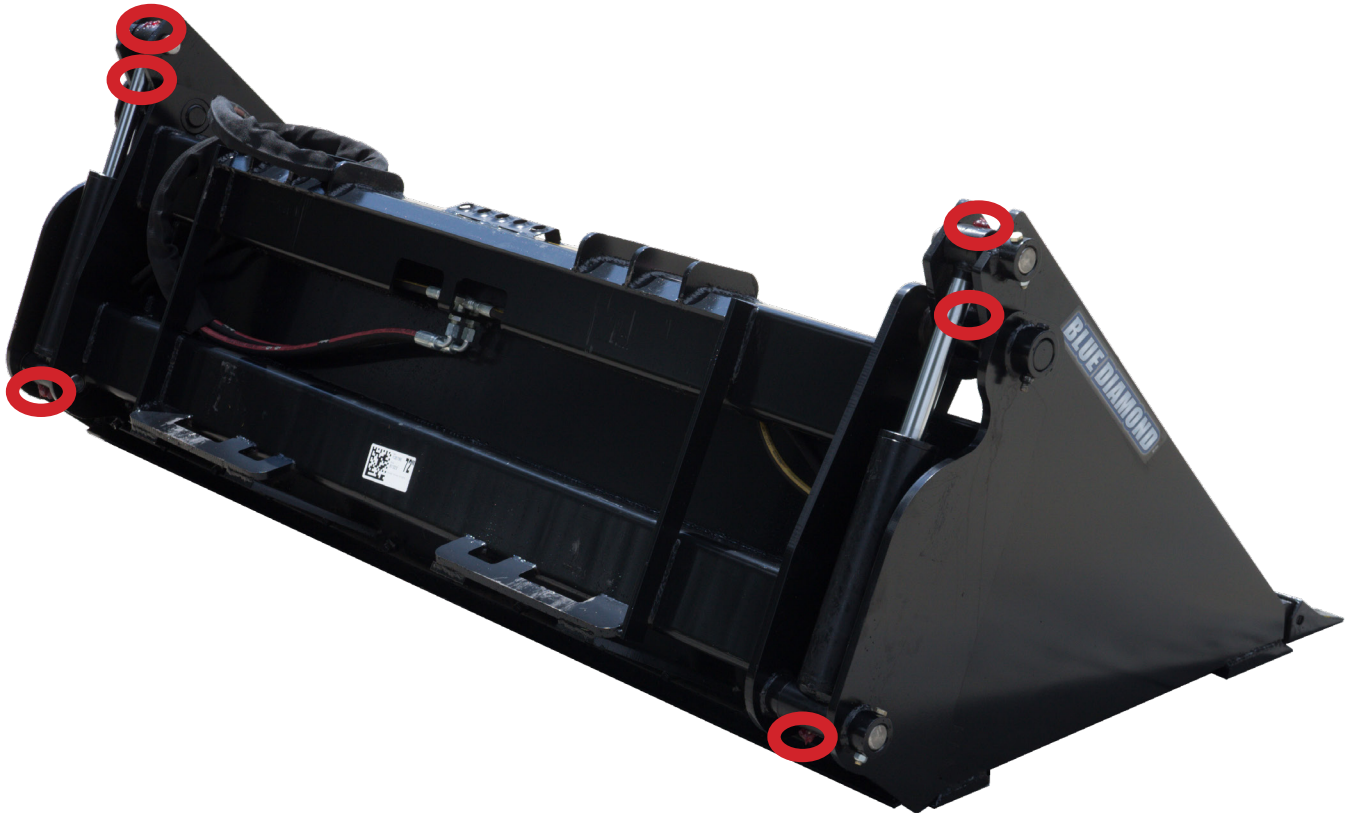


Figure 1

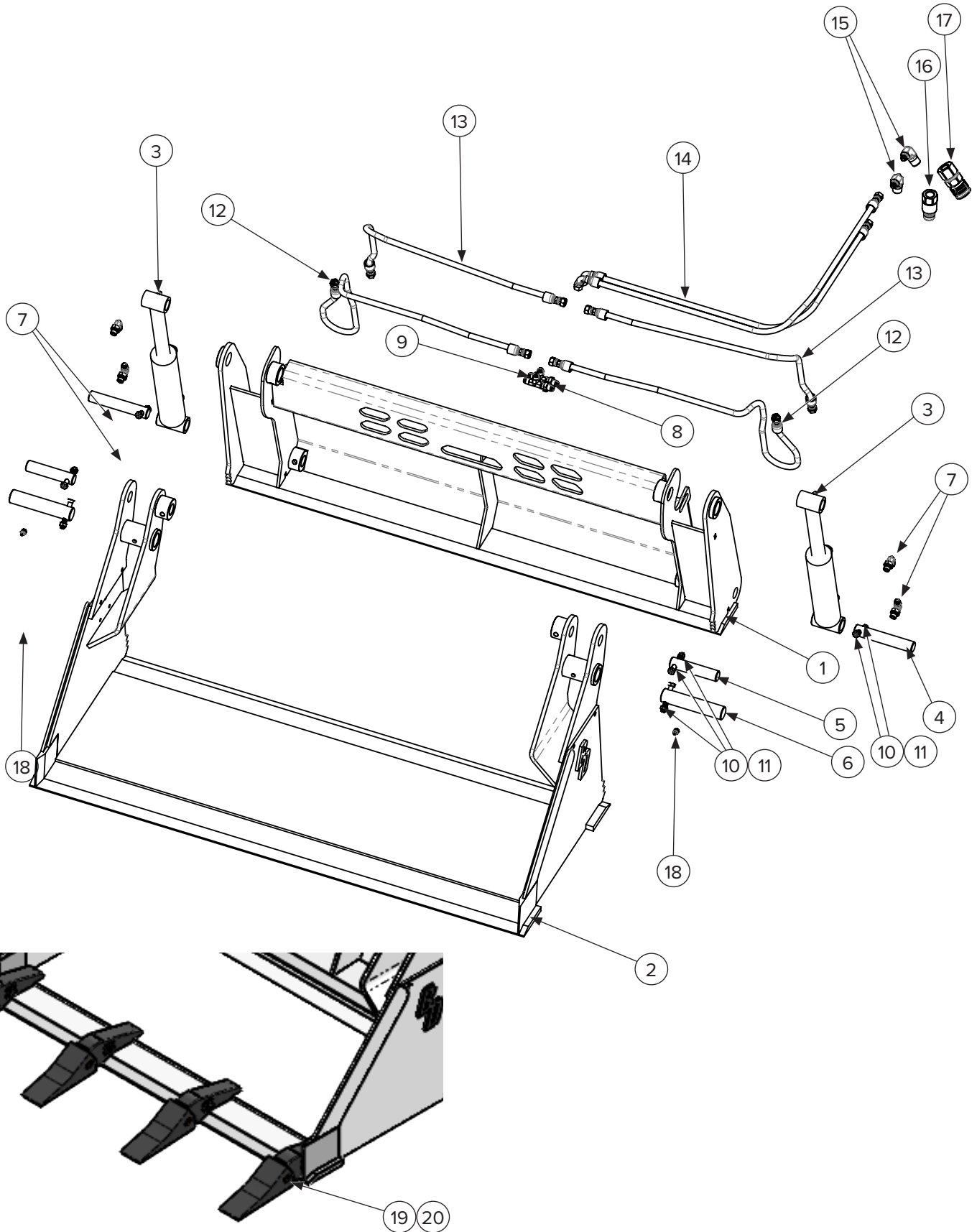
4. Maintenance

4.7 Troubleshooting

PROBLEM	CAUSE	SOLUTION
Hydraulic oil level goes down during operation.	Leak at hoses on the attachment	Investigate and repair.
	Leak in the prime mover hydraulic system	Investigate and repair.
Bucket does not open or close.	Quick disconnects not connected	Check and recouple quick disconnects.
	Hoses damaged	Check for a smashed or kinked hose. Replace if found.
	Skid steer auxiliary circuit inoperative.	Investigate and repair.
Bucket moves abnormally slow.	Restricted hose	Check for damaged hose between skid steer and clamp cylinder. If damaged, replace the hose.
	Bad circuit relief on skid steer	Investigate and repair.
	Auxiliary valve spool on skid steer not shifting properly	Investigate and repair.
	Cylinder seals bypassing	Have cylinders repacked or replaced.

5. Parts

5.1 Mini Models – 36”, 42”, 48”, & 50”



5. Parts

5.1 Mini Models – 36”, 42” 48”, & 50” Cont’d

Revision 001

ITEM	PART NUMBER	DESCRIPTION	QTY 36”	QTY 42”	QTY 48”	QTY 50”
1	208700*	36” Mount	1	—	—	—
	208701*	42” Mount	—	1	—	—
	208702*	48” Mount	—	—	1	—
	208703*	50” Mount	—	—	—	1
2	208704	36” Bucket, Smooth	1	—	—	—
	208708	36” Bucket, Tooth				
	208705	42” Bucket, Smooth	—	1	—	—
	208709	42” Bucket, Tooth				
	208706	48” Bucket, Smooth	—	—	1	—
	208710	48” Bucket, Tooth				
	208707	50” Bucket, Smooth	—	—	—	1
	208711	50” Bucket, Tooth				
3	208993	Hydraulic Cylinder – 2” Bore, 6” Stroke, 14” Retraction, SAE 6 Ports	2			
4	208713	Pivot Pin – 5 3/4” Long x 1” Diameter Pin with 2/5” Bolt Hole 1/2” From End	2			
5	208712	Pivot Pin – 4 5/8” Long x 1” Diameter Pin with 2/5” Bolt Hole 1/2” From End	2			
6	206342	Pivot Pin – 1 1/4” Diameter, 6” Long, 2/5” Bolt Hole 1/2” From End	2			
7	295030-M06ORB-M06JIC	Hydraulic 90 Degree Fitting – Male #6 Oring Boss x Male #6 JIC	4			
8	206354	Bulkhead Run Tee for Machine Hose to Cylinder Hose Connection	2			
9	295052	Hydraulic Bulkhead Fitting Locknut #6	2			
10	299329	Bolt – Grade 8 Hex Head 3/8”–16 x 2 1/2”	6			
11	208550	Stover Lock Nut 3/8”	6			
12	208740	Cylinder Hose – 1/4” Diameter, 36” OAL, 3/8” JIC Both Ends	2	—	—	—
	208717	Cylinder Hose – 1/4” Diameter, 39” OAL, 3/8” JIC Both Ends	—	2	—	—
	208743	Cylinder Hose – 1/4” Diameter, 42” OAL, 3/8” JIC Both Ends	—	—	2	2
13	206056	Cylinder Hose – 1/4” Diameter, 25” OAL, 3/8” JIC Both Ends	2	—	—	—
	208715	Cylinder Hose – 1/4” Diameter, 27” OAL, 3/8” JIC Both Ends	—	2	—	—
	208716	Cylinder Hose – 1/4” Diameter, 31” OAL, 3/8” JIC Both Ends	—	—	2	2
14	208714	Machine Hose Set – 1/4” Diameter, 78” OAL, #6 Female JIC Straight to #6 Female JIC 90 Degree with 48” Hose Wrap	1			
15	295030-M06JIC-M08NPT	Hydraulic 90 Degree Fitting – Male #6 JIC x Male #8 Pipe Thread	2			
16	224006	Coupler – Male, Flat Face, 1/2” Body, 1/2” Pipe Thread	1			
17	224005	Coupler – Female, Flat Face, 1/2” Body, 1/2” Pipe Thread	1			
18	299016	Grease Zerk Fitting – 1/8” NPT Steel	2			
19	210005	Tooth, Heavy Cast 230 (Side Pin)	4	5	6	
20	210006	Tooth Retainer Pin for 230 Tooth (Side Pin)	4	5	6	

*Contact Blue Diamond® Product Support for additional mount options.

5. Parts

5.1 Mini Models – 36”, 42” 48”, & 50” Cont’d

Revision 000

ITEM	PART NUMBER	DESCRIPTION	QTY 36”	QTY 42”	QTY 48”	QTY 50”
1	208718*	36” Mount – Mini Universal	1	–	–	–
	208719*	42” Mount – Mini Universal	–	1	–	–
	208723*	48” Mount – Mini Universal	–	–	1	–
	208731*	50” Mount – Mini Universal	–	–	–	1
2	208732	36” Bucket, Smooth	1	–	–	–
	208733	36” Bucket, Tooth				
	208734	42” Bucket, Smooth	–	1	–	–
	208737	42” Bucket, Tooth				
	208760	48” Bucket, Smooth	–	–	1	–
	208738	48” Bucket, Tooth				
	208739	50” Bucket, Smooth	–	–	–	1
	208741	50” Bucket, Tooth				
3	208724	Cylinder	2			
4	208713	Pivot Pin – 5 3/4” Long x 1” Diameter Pin with 2/5” Bolt Hole 1/2” From End	2			
5	208712	Pivot Pin – 4 5/8” Long x 1” Diameter Pin with 2/5” Bolt Hole 1/2” From End	2			
6	206342	Pivot Pin – 1 1/4” Diameter, 6” Long, 2/5” Bolt Hole 1/2” From End	2			
7	295030-M06ORB-M06JIC	Hydraulic 90 Degree Fitting – Male #6 Oring Boss x Male #6 JIC	4			
8	206354	Bulkhead Run Tee for Machine Hose to Cylinder Hose Connection	2			
9	295052	Hydraulic Bulkhead Fitting Locknut #6	2			
10	299329	Bolt – Grade 8 Hex Head 3/8”–16 x 2 1/2”	6			
11	208550	Stover Lock Nut 3/8”	6			
12	208740	Cylinder Hose – 1/4” Diameter, 36” OAL, 3/8” JIC Both Ends	2	–	–	–
	208717	Cylinder Hose – 1/4” Diameter, 39” OAL, 3/8” JIC Both Ends	–	2	–	–
	208743	Cylinder Hose – 1/4” Diameter, 42” OAL, 3/8” JIC Both Ends	–	–	2	2
13	206056	Cylinder Hose – 1/4” Diameter, 25” OAL, 3/8” JIC Both Ends	2	–	–	–
	208715	Cylinder Hose – 1/4” Diameter, 27” OAL, 3/8” JIC Both Ends	–	2	–	–
	208716	Cylinder Hose – 1/4” Diameter, 31” OAL, 3/8” JIC Both Ends	–	–	2	2
14	208714	Machine Hose Set – 1/4” Diameter, 78” OAL, #6 Female JIC Straight to #6 Female JIC 90 Degree with 48” Hose Wrap	1			
15	295030-M06JIC-M08NPT	Hydraulic 90 Degree Fitting – Male #6 JIC x Male #8 Pipe Thread	2			
16	224006	Coupler – Male, Flat Face, 1/2” Body, 1/2” Pipe Thread	1			
17	224005	Coupler – Female, Flat Face, 1/2” Body, 1/4” Pipe Thread	1			
18	203072	Straight Grease Zerk 1/4–28	2			
19	210005	Tooth, Heavy Cast 230 (Side Pin)	4	5	6	
20	210006	Tooth Retainer Pin for 230 Tooth (Side Pin)	4	5	6	

*Contact Blue Diamond® Product Support for additional mount options.

5. Parts

5.2 Full Size Models – 60”, 66”, 72”, 78”, & 84” Cont’d

Revision 001

ITEM	PART NUMBER	DESCRIPTION	QTY 60”	QTY 66”	QTY 72”	QTY 78”	QTY 84”
1	208779*	60” Mount	1	—	—	—	—
	208784*	66” Mount	—	1	—	—	—
	208789*	72” Mount	—	—	1	—	—
	208794*	78” Mount	—	—	—	1	—
	208799*	84” Mount	—	—	—	—	1
2	208778	60” Bucket, Smooth	1	—	—	—	—
	208776	60” Bucket, Tooth		—	—	—	—
	208783	66” Bucket, Smooth	—	1	—	—	—
	208781	66” Bucket, Tooth			—	—	—
	208788	72” Bucket, Smooth	—	—	1	—	—
	208786	72” Bucket, Tooth		—		—	
	208793	78” Bucket, Smooth	—	—	—	1	—
	208791	78” Bucket, Tooth		—	—		
	208798	84” Bucket, Smooth	—	—	—	—	1
208796	84” Bucket, Tooth	—		—			
3	208725	Hydraulic Cylinder – 2 1/2” Bore, 8” Stroke, 15” Retraction	2				
4	206343	Pivot Pin – 5 1/4” Long x 1 1/4” Diameter Pin with Bolt Hole 1/2” From End	2				
5	214084	Pivot Pin – 7” Long x 1 1/4” Diameter Pin with Bolt Hole 1/2” From End	2				
6	214083	Pivot Pin – 7 1/8” Long x 1 1/2” Diameter Pin with Bolt Hole 1/2” From End	2				
7	299329	Bolt – Grade 8 Hex Head 3/8”–16 x 2 1/2”	4				
8	299625	Nylock Nut – Grade 8 Hex Head 3/8”–16	6				
9	299425	Bolt – Grade 8 Hex Head 3/8”–16 x 3”	2				
10	206355	Bulkhead Branch T Fitting – Joins Machine Hoses to Grapple	2				
11	109115	Bolt–On Edge, 60”	1	—	—	—	—
	109120	Bolt–On Edge, 66”	—	1	—	—	—
	109125	Bolt–On Edge, 72”	—	—	1	—	—
	109130	Bolt–On Edge, 78”	—	—	—	1	—
	109140	Bolt–On Edge, 84”	—	—	—	—	1
12	299016	Grease Zerk Fitting – 1/8” NPT Steel	2				
13	109176	Bolt – 5/8”–11 x 2” Grade 8 Plow Bolt for All Bolt–On Edges	10	11	12	13	14
14	109177	Nut – 5/8”–11 All Metal Locknut for All Bolt–On Edges	10	11	12	13	14
15	224008	Coupler – Male, Flat Face, 3/8” Pipe Thread with 90 Degree Angle	1				
16	224007	Coupler – Female, Flat Face, 3/8” Pipe Thread with 90 Degree Angle	1				

5. Parts

5.2 Full Size Models – 60”, 66”, 72”, 78”, & 84” Cont’d

Revision 001

ITEM	PART NUMBER	DESCRIPTION	QTY 60”	QTY 66”	QTY 72”	QTY 78”	QTY 84”	
17	208752	Lower Cylinder Hose – 33” OAL, Male #4 Oring Boss to Female #6 JIC Swivel	2	—	—	—	—	
	208755	Lower Cylinder Hose – 36” OAL, Male #4 Oring Boss to Female #6 JIC Swivel	—	2	—	—	—	
	208758	Lower Cylinder Hose – 39” OAL, Male #4 Oring Boss to Female #6 JIC Swivel	—	—	2	—	—	
	208761	Lower Cylinder Hose – 42” OAL, Male #4 Oring Boss to Female #6 JIC Swivel	—	—	—	2	—	
	208764	Lower / Upper Cylinder Hose – 45” OAL, Male #4 Oring Boss to Female #6 JIC Swivel	—	—	—	—	2	
18	208764	Upper / Lower Cylinder Hose – 45” OAL, Male #4 Oring Boss to Female #6 JIC Swivel	2	—	—	—	—	
	208756	Upper Cylinder Hose – 48” OAL, Male #4 Oring Boss to Female #6 JIC Swivel	—	2	—	—	—	
	208759	Upper Cylinder Hose – 51” OAL, Male #4 Oring Boss to Female #6 JIC Swivel	—	—	2	—	—	
	208762	Upper Cylinder Hose – 54” OAL, Male #4 Oring Boss to Female #6 JIC Swivel	—	—	—	2	—	
	208765	Upper Cylinder Hose – 57” OAL, Male #4 Oring Boss to Female #6 JIC Swivel	—	—	—	—	2	
19	208735	Machine Hose Set – 80” OAL with Hose Wrap No Couplers	1					
20	210005	Tooth, Heavy Cast 230 (Side Pin)	7	8	9	10		
21	210006	Tooth Retainer Pin for 230 Tooth (Side Pin)	7	8	9	10		

*Contact Blue Diamond® Product Support for additional mount options.

Optional Bolt–On Edges for Smooth Buckets for Both Revisions

PART NUMBER	DESCRIPTION	QTY 60”	QTY 66”	QTY 72”	QTY 78”	QTY 84”
109115*	60” Bolt–On Edge	1	—	—	—	—
109120*	66” Bolt–On Edge	—	1	—	—	—
109125*	72” Bolt–On Edge	—	—	1	—	—
109130*	78” Bolt–On Edge	—	—	—	1	—
109140*	84” Bolt–On Edge	—	—	—	—	1
109176**	Bolt – 5/8”–11 x 2” Grade 8 Plow Bolt for All Bolt–On Edges	10	11	12	13	14
109177**	Nut – 5/8”–11 All Metal Locknut for All Bolt–On Edges	10	11	12	13	14

*Kits so hardware is included: 309115, 309120, 309125, 309130, & 309140.

**109176 and 109177 are required to attach the bolt–on edges to the edge of the bucket.

5. Parts

5.2 Full Size Models – 60”, 66”, 72”, 78”, & 84” Cont’d

Revision 000

ITEM	PART NUMBER	DESCRIPTION	QTY 60”	QTY 66”	QTY 72”	QTY 78”	QTY 84”
1	208742*	60” Mount	1	—	—	—	—
	208744*	66” Mount	—	1	—	—	—
	208745*	72” Mount	—	—	1	—	—
	208747*	78” Mount	—	—	—	1	—
	208748*	84” Mount	—	—	—	—	1
2	208750	60” Bucket, Smooth	1	—	—	—	—
	208751	60” Bucket, Tooth		—	—	—	—
	208753	66” Bucket, Smooth	—	1	—	—	—
	208754	66” Bucket, Tooth			—	—	—
	208766	72” Bucket, Smooth	—	—	1	—	—
	208757	72” Bucket, Tooth		—		—	—
	208763	78” Bucket, Smooth	—	—	—	1	—
	208767	78” Bucket, Tooth		—	—		—
	208768	84” Bucket, Smooth	—	—	—	—	1
	208769	84” Bucket, Tooth		—	—	—	
3	208725	Hydraulic Cylinder – 2 1/2” Bore, 8” Stroke, 15” Retraction	2				
4	206010	Pivot Pin – 5 1/4” Long x 1 1/4” Diameter Pin with Bolt Hole 1/2” From End	2				
5	214084	Pivot Pin – 7” Long x 1 1/4” Diameter Pin with Bolt Hole 1/2” From End	2				
6	214083	Pivot Pin – 7 1/8” Long x 1 1/2” Diameter Pin with Bolt Hole 1/2” From End	2				
7	299329	Bolt – Grade 8 Hex Head 3/8”–16 x 2 1/2”	4				
8	208550	Stover Lock Nut 3/8”	6				
9	299425	Bolt – Grade 8 Hex Head 3/8”–16 x 3”	2				
10	206355	Bulkhead Branch T Fitting – Joins Machine Hoses to Grapple	2				
11	208770-D	60” Bolt–On Dozing Edge 1/2” x 6” x 61 1/2”	1	—	—	—	—
	208772-D	66” Bolt–On Dozing Edge 1/2” x 6” x 67 1/2”	—	1	—	—	—
	208775-D	72” Bolt–On Dozing Edge 1/2” x 6” x 73 1/2”	—	—	1	—	—
	208780-D	78” Bolt–On Dozing Edge 1/2” x 6” x 79 1/2”	—	—	—	1	—
	208785-D	84” Bolt–On Dozing Edge 1/2” x 6” x 85 1/2”	—	—	—	—	1
12	203072	Straight Grease Zerk Fitting 1/4–28	2				
13	109176	Bolt – 5/8”–11 x 2” Grade 8 Plow Bolt for All Bolt–On Edges	10	11	12	13	14
14	109177	Nut – 5/8”–11 All Metal Locknut for All Bolt–On Edges	10	11	12	13	14
15	224008	Coupler – Male, Flat Face, 3/8” Pipe Thread with 90 Degree Angle	1				
16	224007	Coupler – Female, Flat Face, 3/8” Pipe Thread with 90 Degree Angle	1				

5. Parts

5.2 Full Size Models – 60”, 66”, 72”, 78”, & 84” Cont’d

Revision 000

ITEM	PART NUMBER	DESCRIPTION	QTY 60”	QTY 66”	QTY 72”	QTY 78”	QTY 84”	
17	208752	Lower Cylinder Hose – 33” OAL, Male #4 Oring Boss to Female #6 JIC Swivel	2	—	—	—	—	
	208755	Lower Cylinder Hose – 36” OAL, Male #4 Oring Boss to Female #6 JIC Swivel	—	2	—	—	—	
	208758	Lower Cylinder Hose – 39” OAL, Male #4 Oring Boss to Female #6 JIC Swivel	—	—	2	—	—	
	208761	Lower Cylinder Hose – 42” OAL, Male #4 Oring Boss to Female #6 JIC Swivel	—	—	—	2	—	
	208764	Lower / Upper Cylinder Hose – 45” OAL, Male #4 Oring Boss to Female #6 JIC Swivel	—	—	—	—	2	
18	208764	Upper / Lower Cylinder Hose – 45” OAL, Male #4 Oring Boss to Female #6 JIC Swivel	2	—	—	—	—	
	208756	Upper Cylinder Hose – 48” OAL, Male #4 Oring Boss to Female #6 JIC Swivel	—	2	—	—	—	
	208759	Upper Cylinder Hose – 51” OAL, Male #4 Oring Boss to Female #6 JIC Swivel	—	—	2	—	—	
	208762	Upper Cylinder Hose – 54” OAL, Male #4 Oring Boss to Female #6 JIC Swivel	—	—	—	2	—	
	208765	Upper Cylinder Hose – 57” OAL, Male #4 Oring Boss to Female #6 JIC Swivel	—	—	—	—	2	
19	208735	Machine Hose Set – 80” OAL with Hose Wrap No Couplers	1					
20	210005	Tooth, Heavy Cast 230 (Side Pin)	7	8	9	10		
21	210006	Tooth Retainer Pin for 230 Tooth (Side Pin)	7	8	9	10		

*Contact Blue Diamond® Product Support for additional mount options.

5. Parts

5.3 Safety Decals

1



2



3



4



5

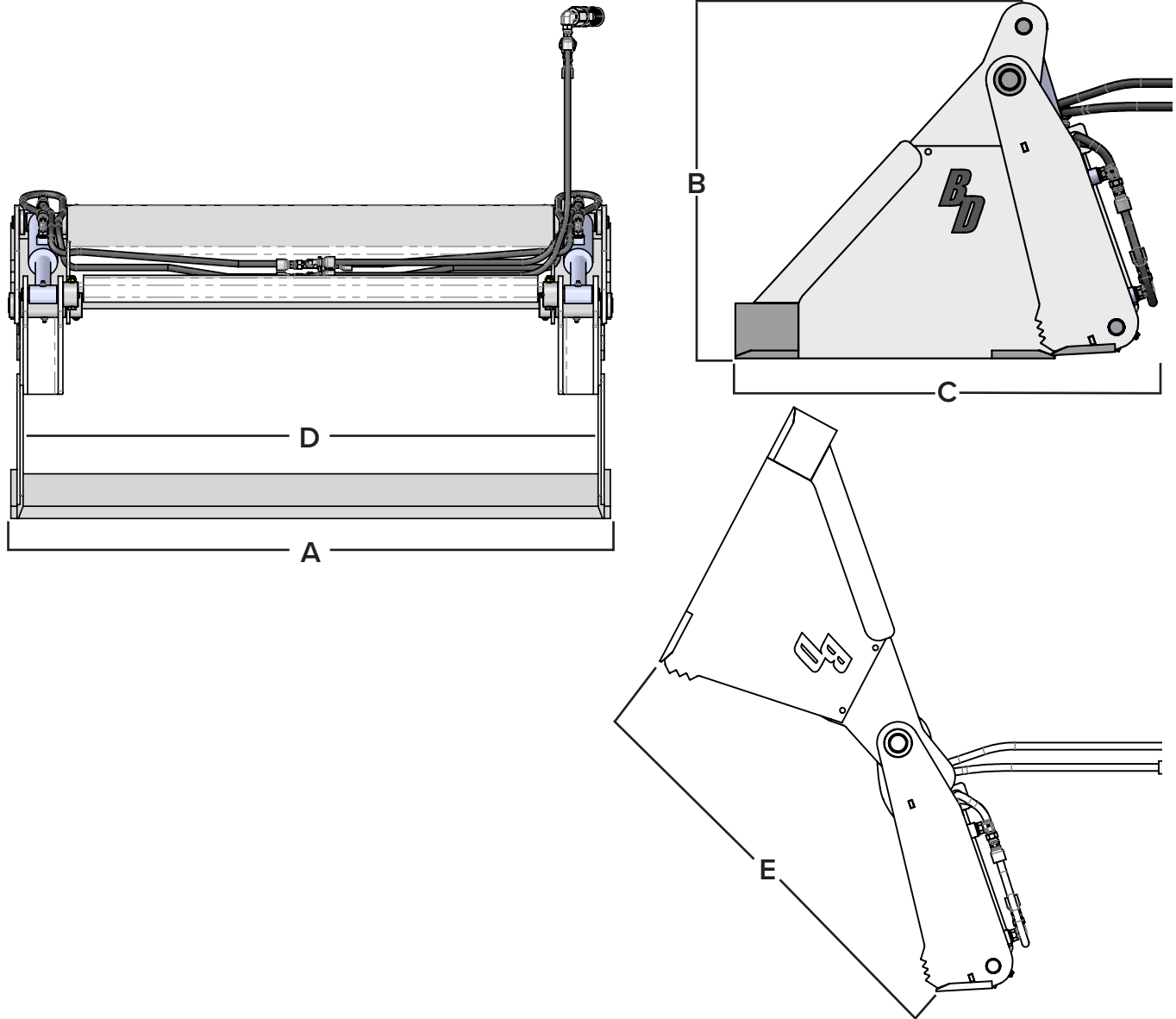


ITEM	PART NUMBER	DESCRIPTION	QTY
1	BD-060	Decal, Blue Diamond Attachments 2.4375" x 3.375"	2
2	BD-004	Decal, Grease All Fittings Every 8 Hours 2.0" x 4.0"	1
3	BD-001	Decal, Read Owner's Manual 3.0" x 3.0"	1
4	BD-123	Decal, High Pressure Fluid Hazard 3.0" x 3.0"	1
5	BD-092	Decal, Warranty Registration QR Code 1.5" x 2.0"	1

6. Specifications

6.1 Attachment Specifications

Mini Models

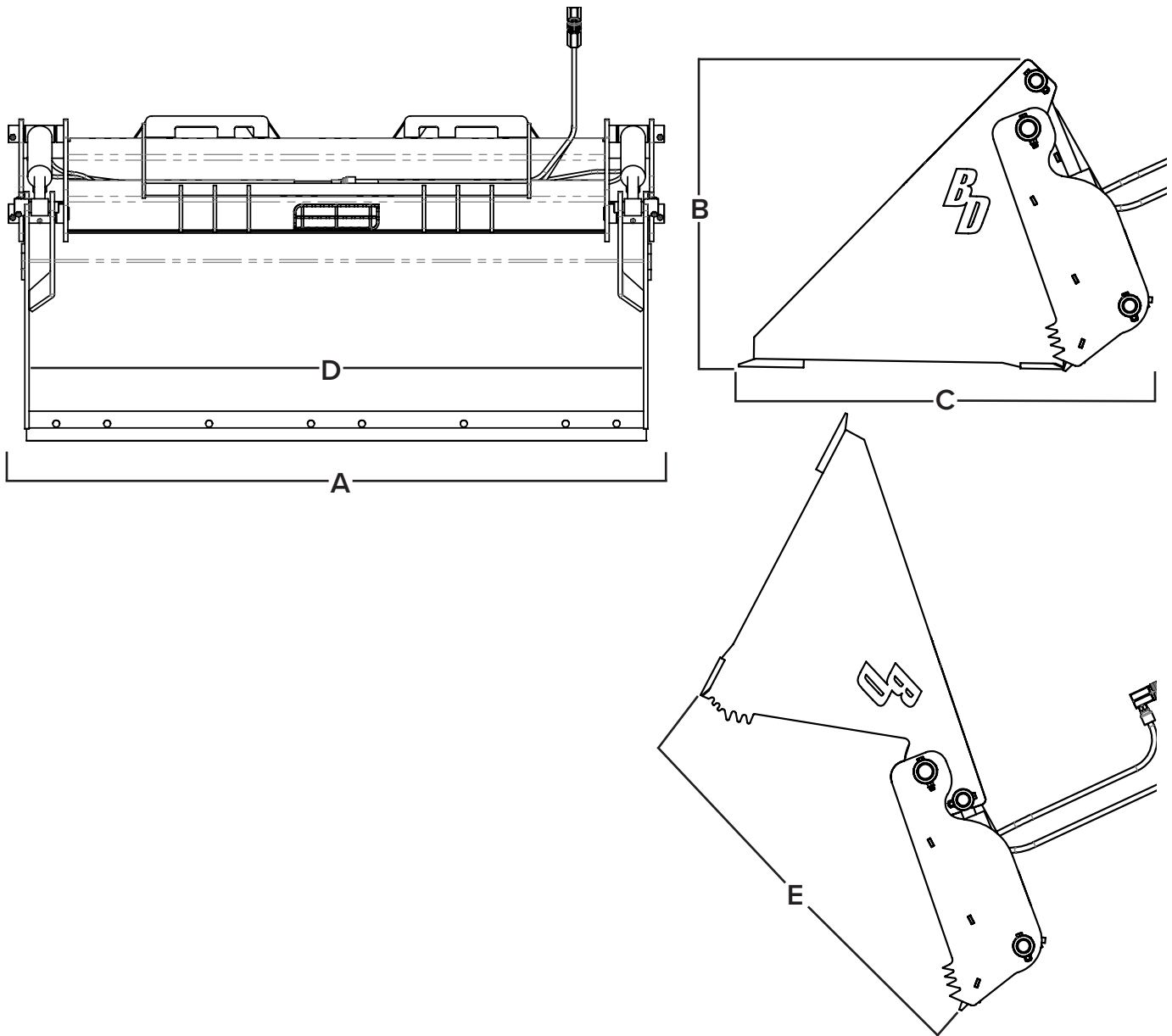


DESCRIPTION	36"	42"	48"	50"
Overall Width (A)	37 3/8"	43 3/8"	49 3/8"	51 3/8"
Overall Height (B)	23"			
Overall Length (C)	27"			
Inside Bucket Width (D)	35"	41"	47"	49"
Opening Size (E)	30"			
Maximum Pressure	3200 PSI			
Weight	300 lbs	330 lbs	350 lbs	400 lbs

6. Specifications

6.1 Attachment Specifications Cont'd

Full Size Models



DESCRIPTION	60"	66"	72"	78"	84"
Overall Width (A)	65 1/4"	71 1/4"	77 1/4"	83 1/4"	89 1/4"
Overall Height (B)	29"				
Overall Length (C)	38"				
Inside Bucket Width (D)	60 3/8"	66 3/8"	72 3/8"	78 3/8"	84 3/8"
Opening Size (E)	38.5"				
Maximum Pressure	3200 PSI				
Weight	780 lbs	810 lbs	850 lbs	900 lbs	950 lbs

6. Specifications

6.2 Torque Specifications

Standard Hardware and Lock Nuts

BOLT TYPE	SAE GRADE 5		SAE GRADE 8		LOCK NUTS			
	Nominal Size	Plated or Unplated Silver	Plated W/ ZnCr Gold	Plated or Unplated Silver	Plated W/ ZnCr Gold	Plated or Unplated Silver	Plated W/ ZnCr Gold	W/ Grade 5 Bolt
1/4	55 in / lb (6.2 N•m)	72 in / lb (8.1 N•m)	86 in / lb (9.7 N•m)	112 in / lb (12.6 N•m)	121 in / lb (13.6 N•m)	157 in / lb (17.7 N•m)	61 in / lb (6.9 N•m)	86 in / lb (9.8 N•m)
5/16	115 in / lb (13 N•m)	149 in / lb (17 N•m)	178 in / lb (20 N•m)	229 in / lb (26 N•m)	250 in / lb (28 N•m)	325 in / lb (37 N•m)	125 in / lb (14 N•m)	176 in / lb (20 N•m)
3/8	17 ft / lb (23 N•m)	22 ft / lb (30 N•m)	26 ft / lb (35 N•m)	34 ft / lb (46 N•m)	37 ft / lb (50 N•m)	48 ft / lb (65 N•m)	19 ft / lb (26 N•m)	26 ft / lb (35 N•m)
7/16	27 ft / lb (37 N•m)	35 ft / lb (47 N•m)	42 ft / lb (57 N•m)	54 ft / lb (73 N•m)	59 ft / lb (80 N•m)	77 ft / lb (104 N•m)	30 ft / lb (41 N•m)	42 ft / lb (57 N•m)
1/2	42 ft / lb (57 N•m)	54 ft / lb (73 N•m)	64 ft / lb (87 N•m)	83 ft / lb (113 N•m)	91 ft / lb (123 N•m)	117 ft / lb (159 N•m)	45 ft / lb (61 N•m)	64 ft / lb (88 N•m)
9/16	60 ft / lb (81 N•m)	77 ft / lb (104 N•m)	92 ft / lb (125 N•m)	120 ft / lb (163 N•m)	130 ft / lb (176 N•m)	169 ft / lb (229 N•m)	65 ft / lb (88 N•m)	92 ft / lb (125 N•m)
5/8	83 ft / lb (112 N•m)	107 ft / lb (145 N•m)	128 ft / lb (174 N•m)	165 ft / lb (224 N•m)	180 ft / lb (244 N•m)	233 ft / lb (316 N•m)	90 ft / lb (122 N•m)	127 ft / lb (172 N•m)
3/4	146 ft / lb (198 N•m)	189 ft / lb (256 N•m)	226 ft / lb (306 N•m)	293 ft / lb (397 N•m)	319 ft / lb (432 N•m)	413 ft / lb (560 N•m)	160 ft / lb (217 N•m)	226 ft / lb (306 N•m)
7/8	142 ft / lb (193 N•m)	183 ft / lb (248 N•m)	365 ft / lb (495 N•m)	473 ft / lb (641 N•m)	515 ft / lb (698 N•m)	667 ft / lb (904 N•m)	258 ft / lb (350 N•m)	364 ft / lb (494 N•m)
1	213 ft / lb (289 N•m)	275 ft / lb (373 N•m)	547 ft / lb (742 N•m)	708 ft / lb (960 N•m)	773 ft / lb (1048 N•m)	1000 ft / lb (1356 N•m)	386 ft / lb (523 N•m)	545 ft / lb (739 N•m)

**This page intentionally
left blank**



Warranty

MANUFACTURER'S LIMITED WARRANTY

BLUE DIAMOND® ATTACHMENTS, a manufacturer of quality attachments, warrants new BLUE DIAMOND® ATTACHMENTS products and/or attachments at the time of delivery to the original purchaser, to be free from defects in material and workmanship when properly set up and operated in accordance with the recommendations set forth by BLUE DIAMOND® ATTACHMENTS, LLC.

BLUE DIAMOND® ATTACHMENTS liability for any defect with respect to accepted goods shall be limited to repairing the goods at a BLUE DIAMOND® ATTACHMENTS designated location or at an authorized dealer location, or replacing them, as BLUE DIAMOND® ATTACHMENTS shall elect. The above shall be in accordance with BLUE DIAMOND® ATTACHMENTS warranty adjustment policies. BLUE DIAMOND® ATTACHMENTS obligation shall terminate twelve (12) months for the 4-in-1 Bucket after the delivery of the goods to original purchaser.

This warranty shall not apply to any machine or attachment which shall have been repaired or altered outside the BLUE DIAMOND® ATTACHMENTS factory or authorized BLUE DIAMOND® ATTACHMENTS dealership or in any way so as in BLUE DIAMOND® ATTACHMENTS judgment, to affect its stability or reliability, nor which has been subject to misuse, negligence or accident beyond the company recommended machine rated capacity.

WARRANTY CLAIM

To submit a warranty claim, a claim must be filed with BLUE DIAMOND® ATTACHMENTS before work is performed. The BLUE DIAMOND® PRODUCT SUPPORT TEAM will advise repairs and applicable parts exchanges. Tampering with the failed part may void the warranty. This warranty does not include freight or delivery charges incurred when returning machinery for servicing. Dealer mileage, service calls, and pickup/delivery charges are the customers' responsibility.

EXCLUSIONS OF WARRANTY

Except as otherwise expressly stated herein, BLUE DIAMOND® ATTACHMENTS makes no representation or warranty of any kind, expressed or implied, AND MAKES NO WARRANTY OF MERCHANTABILITY IN RESPECT TO ITS MACHINERY AND/OR ATTACHMENTS ARE FIT FOR ANY PARTICULAR PURPOSE. BLUE DIAMOND® ATTACHMENTS shall not be liable for incidental or consequential damages for any breach or warranty, including but not limited to inconvenience, rental of replacement equipment, loss of profits or other commercial loss. Upon purchase, the buyer assumes all liability for all personal injury and property resulting from the handling, possession, or use of the goods by the buyer.

No agent, employee, or representative of BLUE DIAMOND® ATTACHMENTS has any authority to bind BLUE DIAMOND® ATTACHMENTS to any affirmation, representation, or warranty concerning its machinery and/or attachments except as specifically set forth herein.

This warranty policy supersedes any previous documents. Please see bluediamondattachments.com/warranty-policies for the most up to date warranty information.

NOTE: Blue Diamond® Attachments is a trademark of BLUE DIAMOND® ATTACHMENTS



QUALITY | DEPENDABILITY | INTEGRITY

Blue Diamond® Attachments
4512 Anderson Road, Knoxville, TN 37918
888-376-7027