

Water Kit Assembly Instructions



1. Bolt the pump mount bracket to the hood.



2. Bolt the pump to the bracket.



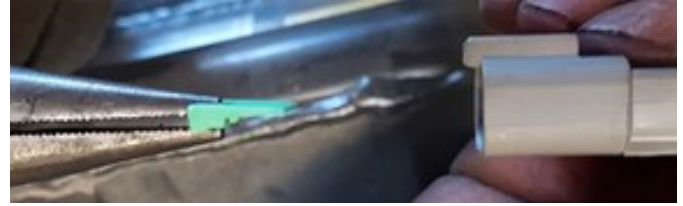
3. Crimp connector pins onto pump wires.



4. Push pins into Deutsch connector, black on "1" and red on "2" as shown. Pull-test both wires.



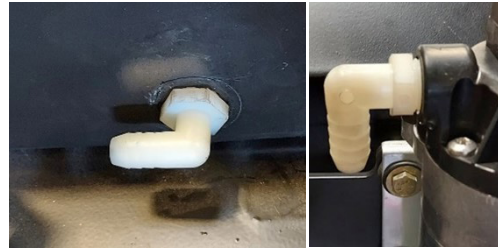
5. Insert green connector piece. Orientate as shown.



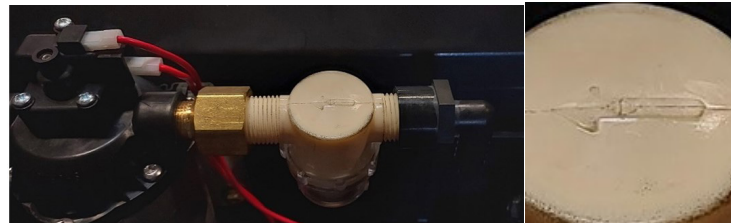
6. Bolt the tank on with the straps, and attach the lid.



7. Thread fittings into the tank and pump outlets.



8. Thread the filter and remaining fittings into the pump inlet as shown. Ensure the direction of flow through the filter is towards the pump.



Revision Date: 08.19.2024

Water Kit Assembly Instructions



9. Attach a short section of the large hose to the tank outlet and pump inlet with hose clamps. Attach one end of the remaining large hose to pump outlet.



10. Route the hose around the Owner's Manual tube, and loosely zip tie in place as shown.



11. Attach the nozzle fittings to the spray bar. Insert the filter, and thread the nut over the spray nozzle.



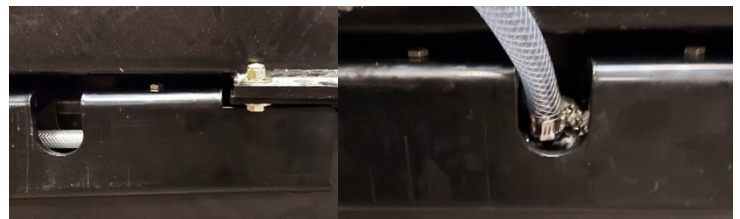
12. Connect the nozzle fittings with the small hose. Make sure to connect the three-barbed tee in between two of the end nozzles as an inlet (not shown).



13. Bolt the spray bar halves together.



14. Loosely attach the end of the spray bar furthest from the inlet tee. Block up the tee end, and attach the loose end of the hose with a hose clamp. Tighten the hose zip ties. Bolt the spray bar to the hood, and tighten both ends.



15. Insert the grommet into the pump cover, and bolt it to the pump bracket.



Revision Date: 08.19.2024