



PARTS & ACCESSORIES



888-376-7027

BLUEDIAMONDATTACHMENTS.COM

ABOUT BLUE DIAMOND® ATTACHMENTS

Blue Diamond® Attachments is a trusted and reliable company. Established in 1995, Blue Diamond® is a widely recognized name in the global attachments industry. We are committed to unparalleled customer service from the very first call to the after-sale follow-up and service.

In today's fast-paced environment, delivering quickly and on time are key to success. Blue Diamond® Attachments is very different in the fact that we stock thousands of finished products in our warehouses every day ready to ship. This results in a big advantage for our customers with many shipments leaving in 2–3 days. Our Tennessee facilities alone are now over 300,000-square-feet situated on 43 acres. These facilities, along with streamlined processes, allow most of our orders to leave our facility within 10 days.

Our parts department keeps thousands of replacement parts at the ready and strives to ship all parts orders received before noon the same day the order is placed! Tracking numbers are sent to our customer the day after the shipment leaves our dock.

We are located in Knoxville, Tennessee. This central location allows our products to reach more than half of the United States population within 2–3 days' shipping time. We have many loading docks, which allow us to keep trailers from several freight companies, making use of the best freight lines available. In addition, we are the only 1-day point of export to multiple foreign ports.



WHY GENUINE BLUE DIAMOND® PARTS?

Whether you have one attachment or maintain an entire fleet, having quick access to the right parts 24/7 can make the difference in keeping your attachments working properly and staying profitable. When you buy genuine Blue Diamond® parts, you are buying top-quality parts and getting expert advice and assistance from our product support team.

Whether you get parts online or by visiting your closest Blue Diamond® dealer, buy with trust, buy with confidence, and know that we will take care of you and your attachment—the first time and every time!

Why You Can Rely on Blue Diamond® Parts:

- Blue Diamond® parts are constructed of top-quality materials, built to exact original specifications by our engineers, and rigorously tested to ensure maximum performance.
- We maintain the largest inventory of replacement parts to ensure the best possible availability, allowing you to receive your parts quickly.
- We have added hundreds of new products, including OEM replacement parts!
- Orders received Monday through Friday by 12pm EST ship the same day by 4pm!

TABLE OF CONTENTS

| | |
|---------------------------|-------|
| Blue Diamond® Parts | 7-53 |
| OEM Parts..... | 54-74 |
| Storage & Display..... | 75 |

WHAT'S INSIDE!

Blue Diamond® sells parts for skid steers, mini skid steers, tractors, excavators, mini excavators, and forklifts, too! Throughout this catalog, you'll find a handy set of icons (shown below) for every part that indicates what machine the part is made for.



BLUE DIAMOND® *VALUES*



INTEGRITY

We always do the right thing.



COMMITMENT

Our TEAM does what it takes to get the job done.



ACCOUNTABILITY

We take responsibility for our actions.



COMPASSION

Always support and help others.



QUALITY

We operate at the highest standard.



GROWTH

Success for everyone that interacts with us.



POSITIVITY

Transfer enthusiasm and motivate others.

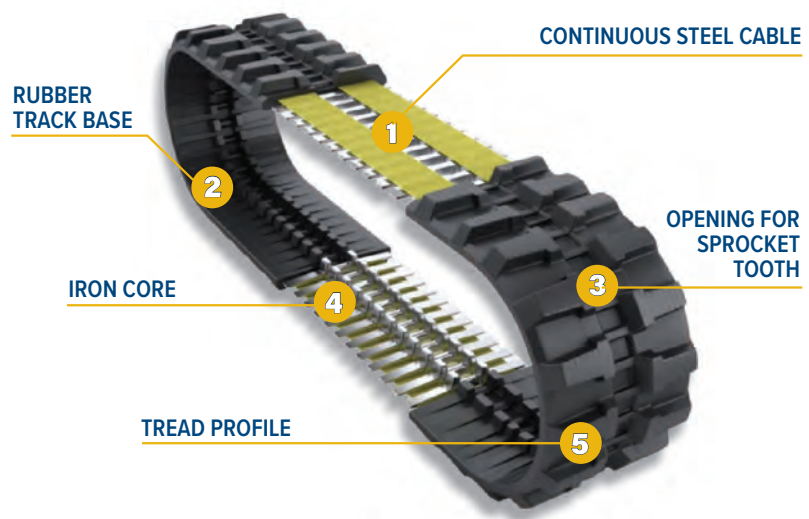


BLUE DIAMOND® RUBBER TRACKS are manufactured from only the finest materials designed to provide excellent performance under a wide range of working conditions. Tough rubber compounds with less filler help provide wear and tear resistance and result in a long service life. Precision forged and heat treated steel link assemblies are laminated with multi-stranded, high tensile continuous steel cords to provide excellent resistance to wear and damage.

REASONS TO CHOOSE BLUE DIAMOND® TRACKS

- ◆ Custom Manufactured for Reliable Performance and Outstanding Durability
- ◆ Maximum Value – Reduced Operating and Maintenance Costs
- ◆ Application Specific Lug Patterns
- ◆ Continuous Steel Cord Structure
- ◆ Solid Steel Forged Links
- ◆ Reinforced Roller Path
- ◆ Blue Diamond Customer Service Experience
- ◆ Backed by the Blue Diamond Satisfaction Guarantee™
- ◆ 2 Year Warranty
- ◆ Ideal for Construction, Agriculture, Landscaping, and Rental Applications
- ◆ Blue Diamond® stocks the most common tread patterns that you depend on!

RUBBER TRACK STRUCTURE



SAME DAY SHIPPING
For all in-stock tracks ordered by 2:00 PM EST

RUBBER TRACK WARRANTY:

These Rubber Tracks come with an industry leading 2-year warranty and the BDA Satisfaction Guarantee you have come to know us for. Are you ready to experience the Blue Diamond Rubber Tracks difference?

| MACHINE TYPE | MONTHS OF SERVICE | HOURS LIMIT |
|-----------------------|-------------------|-------------|
| Compact Track Loaders | 24 | 1800 |
| Mini Excavators | 24 | 2500 |
| Multi-Terrain Loaders | 12 | 1000 |
| Pavers | 24 | 1500 |

RUBBER TRACK TERRAIN GUIDE

C-LUG PATTERN

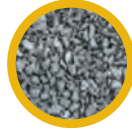
- ◆ Common OEM tread design for mini excavators and skid steers
- ◆ Multi-purpose track with good performance in all-terrain environments
- ◆ Multiple biting edges offer excellent traction and ground contact
- ◆ Optimal service life in demanding environments



Dirt



Asphalt



Gravel



Grass



MULTI-BAR PATTERN

- ◆ Great traction and flotation
- ◆ Smoother ride, less vibration across terrains
- ◆ Less intrusive footprint when traveling across turf
- ◆ Great for snow removal and dirt surfaces



Dirt



Snow



Grass



BLOCK PATTERN

- ◆ Most common OEM recommended tread design
- ◆ Versatile multi-purpose track suitable for dirt, clay, sand, asphalt, and mud
- ◆ Large lug contact area for great traction, durability, and longevity
- ◆ Built to handle any job while providing good traction and even weight distribution



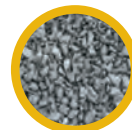
Dirt



Mud



Snow



Gravel



ZIG-ZAG PATTERN

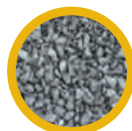
- ◆ Versatile all-season traction and durability
- ◆ Tiered bar design provides better clean out and reduces vibration
- ◆ Performs well in dirt, sand, snow, mud, and clay
- ◆ Directional track provides increased traction in and extremely wet conditions.



Dirt



Asphalt

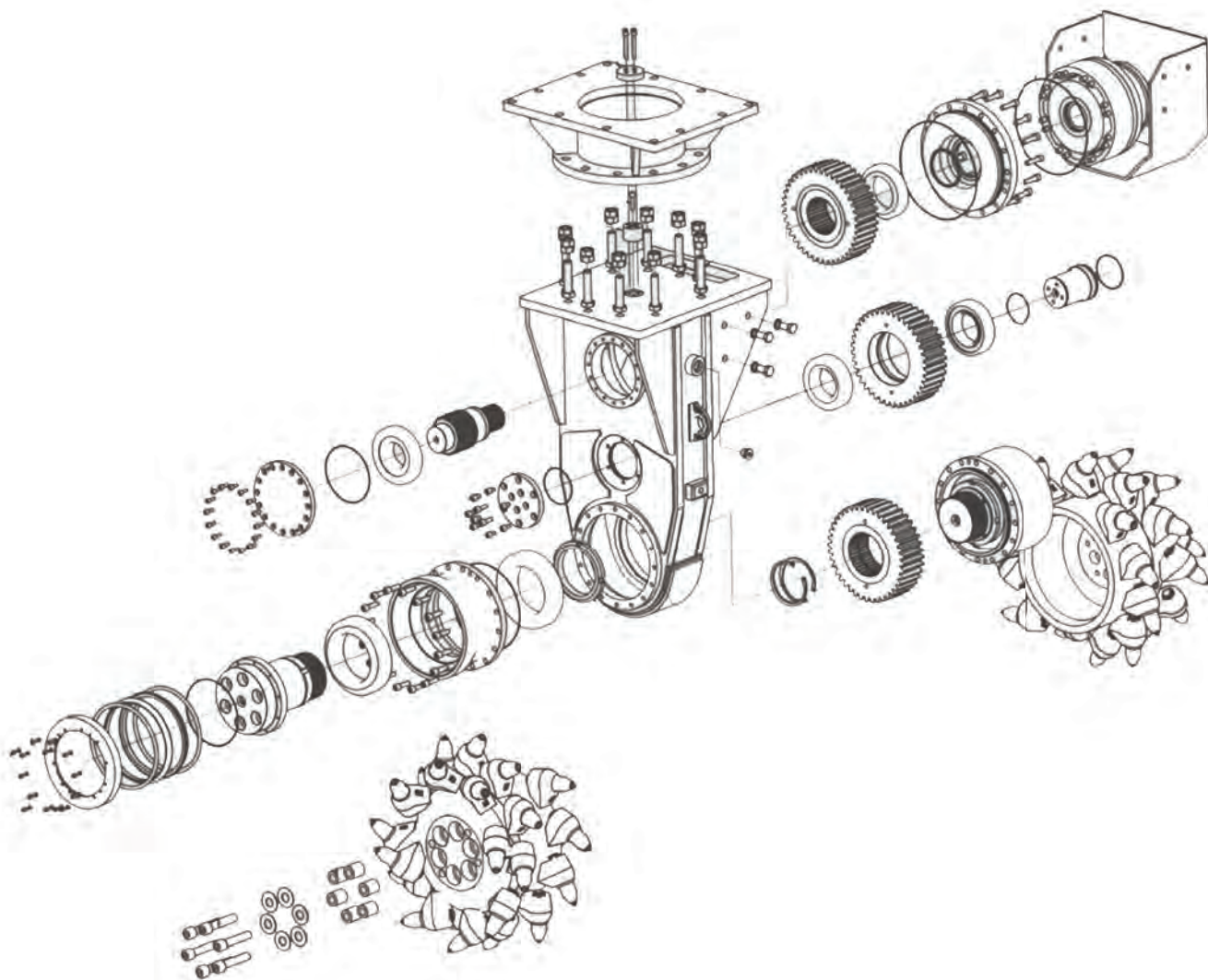


Gravel



Grass





BLUE DIAMOND® PARTS

| | | | |
|------------------------------------|-------|-----------------------------|-------|
| Rubber Tracks..... | 5-6 | Pallet Fork Tines..... | 38-39 |
| Augers..... | 8-12 | Stump Grinders..... | 40 |
| Brooms..... | 13-16 | Power Rakes..... | 40-41 |
| Brush Cutters..... | 17-22 | Grapples..... | 41-42 |
| Buckets..... | 23 | Silt Fence Fabric..... | 42 |
| Serrated Edge Kits..... | 24 | Screening Buckets..... | 43-44 |
| Tooth Bars..... | 24 | Tractor Cutters..... | 45-47 |
| Cold Planers..... | 25 | Trenchers..... | 48-49 |
| Disc Mulchers..... | 26 | Rototillers..... | 50 |
| Drum Mulchers..... | 26 | Vibrating Post Drivers..... | 50 |
| Conversion Interface Adapters..... | 27-28 | Plows..... | 50 |
| Couplers..... | 29-30 | Hay Spears..... | 50 |
| Hoses..... | 31-35 | Wiring Harnesses..... | 51 |
| Hose Protection Systems..... | 36 | Decal Kits..... | 52 |
| Hydraulic Breakers..... | 37 | BDA Parts Online..... | 53 |

AUGERS

Auger Bits

| DIAMETER | HD | HD CAST HEAD | ROCK | TREE |
|----------|--------|--------------|--------|--------|
| 4" | 105105 | 105105 | 105305 | NA |
| 6" | 105110 | 105205 | 105310 | NA |
| 9" | 105120 | 105210 | 105320 | NA |
| 10" | 105125 | 105215 | 105325 | NA |
| 12" | 105130 | 105220 | 105330 | NA |
| 15" | 105135 | 105225 | 105337 | NA |
| 18" | 105145 | 105235 | 105345 | 105405 |
| 24" | 105150 | 105239 | 105350 | 105410 |
| 30" | 105155 | 105241 | 105355 | 105415 |
| 36" | 105160 | 105243 | 105360 | 105420 |
| 42" | NA | 105245 | NA | NA |
| 48" | NA | 105250 | NA | NA |

Note (1): Custom sizes and lengths are available on request

Note (2): Specify collar size when ordering. We supply most bits in 2" Hex, 2" Round, 2 1/2" Hex, and 2 9/16" Round

Note (3): Part #'s listed are standard 48" length with 2" collar.



HD Bit w/Cast Head 6"
2" Hex Collar
105205



HD Bit w/ Cast Head 18" Diameter,
2" Hex Collar
105235



HD Bit 24" Diameter, 2" Hex Collar
105150



HD Auger Bit 12" Diameter, 2" Hex Collar
105130



HD Auger Bit 18" Diameter, 2" Hex Collar
105145



Auger Bit HD 4" Diameter, 2" Hex Collar
105105



Auger Bit HD 6" Diameter, 2" Hex Collar
105110



AUGERS



Wisdom Hard Face Tooth
205045



Carbide Chisel Tooth
205050



Hard Face Gauge Tooth
205040



Tooth Retaining Bolt 205025



Wisdom Tooth 205015



Gauge Tooth 205010



Carbide Bullet Tooth 205070



Carbide Wisdom Tooth 205055



Chisel Tooth 205005



AUGERS



Bit Retaining Bolt

3/4" -10 x 4" G8

205205



Bit Retaining Nut

3/4"

205210



Bolt 3/8"-16 x 1 3/4" Plain Finish Socket Head Cap Screw
(fits Auger Housing to Planetary)

205630



Mount Assembly Bolt

1/2"

205560



Hard Face Chisel Tooth

205035



Rock Bit Small Bullet Tooth

(for Flight)

205096



Planetary Output Shaft Seal

72mm x 100mm x 10 mm Fits
Extreme Duty Series 2 Augers

205775



**Lock Washer for Housing
Planetary Bolt**

3/8" - 16

205631



AUGERS



TECH TIP
Did you know?
 The same tooth is used for both bolt-on and push-on units. The push-on requires that a 205068 rubber be used with it.

Extensions (Variable)

| | 2" Hex | 2" Round | 2 9/16" Round |
|-----|--------|----------|---------------|
| 12" | - | - | 205312 |
| 24" | 205315 | - | 205317 |
| 48" | 205320 | 205334 | 205335 |
| 72" | 205325 | - | 205347 |

Extensions (Fixed)

| | 2" Hex | 2" Round | 2 9/16" Round |
|-----|--------|----------|---------------|
| 12" | 205365 | - | 205367 |
| 24" | 205370 | 205371 | 205372 |
| 48" | 205375 | 205373 | 205377 |
| 72" | 205380 | - | 205382 |

Extension Fixed 2" Hex 48" Long
 205375



Extension Fixed 2" Hex 24" Long
 205370



Carbide Fishtail Point
 205065



Fishtail Point
 205020



Tooth Rubber
 205068



Adapter 2" Hex Female to 2 9/16" Round Male 205105



Adapter 2 9/16" Round Female to 2" Hex Male 205115



AUGERS

Adapters

| Female (from) | Male (to) | |
|---------------|---------------|--------|
| 2" Hex | 2 9/16" Round | 205105 |
| 2" Hex | 2" Round | 205110 |
| 2" Hex | 2 1/2" Hex | 205111 |
| 2 9/16" Round | 2" Hex | 205115 |
| 2" Hex | 2 5/8" Hex | 205116 |
| 2 9/16" Round | 2" Round | 205120 |
| 2" Round | 2" Hex | 205125 |
| 2" Round | 2 9/16" Round | 205130 |
| 2 1/2" Hex | 2" Hex | 205135 |
| 2 5/8" Hex | 2" Hex | 205136 |
| 2 1/2" Hex | 2 9/16" Round | 205137 |



**HD Series 2
Mini Universal Mount**
205551-25



**HD Series 2 Excavator
Mount with Cradle**
105043



**HD Series 2
Skid Steer Mount**
205625



**Extreme Duty Series 2
Skid Steer Mount with Knuckle**
105770



**Extreme Duty Series 2
Excavator Mount with Cradle**
105775



Telescopic Auger Mount
(EX1 to EX7HF)
105780



**Extreme Duty Series 2
Mini Extended Mount**
105772-25



Telescopic Auger Mount

| Part # | Description |
|--------|---|
| 105780 | Mount |
| 105781 | Optional Transport Stand |
| 205788 | 14" Hose Set 1/2" Couplers |
| 205789 | 14" Hose Set 3/4" Couplers |
| 205790 | 14" Hose Set 1/2" Couplers w/Pressure Gauges |
| 205791 | 14" Hose Set 3/4" Couplers w/Pressure Gauges |
| 216697 | Pickup Series 2 Water Spray Bar Weldment 84" (Includes 1 Inner & 1 Outer Channel) |
| 216545 | Pickup Series, Nozzle for Steel Square Tube Spray Bar |



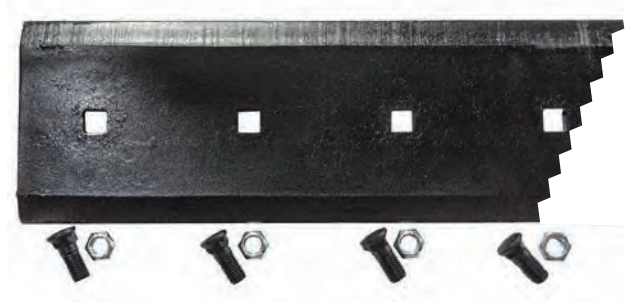
**Optional
Transport Stand**
105781



BROOMS



Pickup Series 37-Gallon Water Tank Assembly Kit
 (includes harness and spray bar)
 60": 316571 72": 316573 84": 316576 96": 316579
 42": 316565 48": 316567 54": 316569



Pickup Series Bolt-on Cutting Edge 72"
 216562-KIT



Additional Sizes

| | |
|-----|------------|
| 60" | 216560-KIT |
| 72" | 216562-KIT |
| 84" | 216564-KIT |
| 96" | 216566-KIT |

Mini Bolt-on Edges

| | |
|-----|--------|
| 42" | 109106 |
| 48" | 109109 |
| 54" | 109112 |



Drum Shaft Bearing
 (for HD Series 2 and Pickup Series Angle Broom)
Note: NOT for Series 2 Pickup Broom
 216479



Flat Nozzle for Spray Bar
 216305



Threaded Nozzle for Spray Bar
 216545




Pickup Series Front Rubber Skirt for 60"
 216453



Additional Sizes

| | |
|-----|-----------|
| 72" | 216455 |
| 84" | 216457 |
| 96" | 216459 |
| 42" | 216818-42 |
| 48" | 216818-48 |
| 54" | 216818-54 |

| Pickup Series Water Tank Spray Bar | Additional Sizes | Mini Sizes | | |
|--------------------------------------|------------------|------------|-----|--------|
| (Note: 72" spray bar shown in image) | 60" | 316580 | 42" | 216854 |
| | 72" | 316583 | 48" | 216856 |
| | 84" | 316586 | 54" | 326858 |
| | 96" | 316589 | | |



Pickup Series Hydraulic Motor Support
 216419



Non-Motor-Side/Standard Duty Angle Broom Bearing
 (requires 2)
 229010



Pickup Series Side Skirt
 216451 & 216822



All wear parts listed are for the original series pickup brooms.
 Call our parts department for assistance with Series 2 wear parts.

BROOMS



Water Kit Hose Crimp
Pickup Series 2
216691



Water Kit hose 1/2"
Pickup Series 2
(Priced Per Foot)
216688



Water Nozzle Strainer/Angle
Severe Duty Series 2
216320



Water Kit Nozzle Retainer Nut
Pickup Series 2
216693



Water Kit Hose 3/8"
Pickup Series 2
(Priced Per Foot)
216690



Water Nozzle Tee w/Jam Nut/Angle/
Pickup Severe Duty Series 2
(for Plastic Spray Bar)
216310



Water Nozzle Elbow w/Jam Nut/
Angle/Pickup Severe Duty Series 2
(for Plastic Spray Bar)
216315



| Part # | Description |
|------------|--|
| 216691 | Pickup Series 2 Water Kit Hose Crimp |
| 216688 | Pickup Series 2 Water Kit Hose 1/2" (Priced Per Foot) |
| 216320 | Severe Duty Series 2 Angle Water Nozzle Strainer |
| 216693 | Pickup Series 2 Water Kit Nozzle Retainer Nut |
| 216690 | Pickup Series 2 Water Kit Hose 3/8" (Priced Per Foot) |
| 216310 | Severe Duty Series 2 Angle/Pickup Water Nozzle Tee w/Jam Nut (for Plastic Spray Bar) |
| 216315 | Severe Duty Series 2 Angle/Pickup Water Nozzle Elbow w/Jam Nut (for End Position) |
| 216655 | Pickup Series 2 Water Tank Strap |
| 216694 | Pickup Series 2 Water Kit 3-Way Barbed Tee Fitting 1/2" x 3/8" x 3/8" |
| 216325 | Severe Duty Series 2 Angle Water Nozzle Holder Plate |
| 216540 | Pickup Series, Pump for Water System |
| 216658 | Pickup Series 2 Water Kit Pump Filter to Hose Fitting 1/2" FNPT x 1/2" Barbed |
| 216542 | Pickup Series, Strainer for Water Kit |
| 216673 | Pickup Series 2 Water Pump Mount Bracket |
| 216660 | Pickup Series 2 Water Kit Pump to Filter Fitting 3/8" MNPT x 1/2" FNPT |
| 216425 | Pickup Series 2 Motor 315cc |
| 216662 | Pickup Series 2 Water Pump 90 Deg Fitting |
| 216538 | Pickup Series Water Pump Cover Grommet for Hole Fits 2" Hole |
| 216548 | Pickup Series, J-Bolt for Water Tank Mount (5/16-18 Thread) |
| 216651 | Pickup Series 2 Water Tank Cap |
| 216539 | Pickup Series Water Pump Cover Plate |
| 216696 | Pickup Series 2 Water Spray Bar Weldment 72" (Includes 1 Inner & 1 Outer Channel) |
| 216478 | Pickup Severe Duty Motor to Shaft Flange |
| 216590 | Pickup Series 2 Bearing for Main Shaft |
| 216455 | Pickup Severe Duty Motor Coupler - Series 1 |
| 216421 | Pickup Severe Duty Motor Coupler - Series 2 |
| 216421-2 | Push Mount - Universal Skid Steer |
| 116026 | Pickup Series, Hydraulic Motor Cover, Washer (1/2" Narrow Plated) |
| 216427 | Spray Bar Tee Water Nozzle Kit |
| 216310-KIT | Spray Bar Tee Water Nozzle Kit |
| 216697 | Pickup Series 2 Water Spray Bar Weldment 84" (Includes 1 Inner & 1 Outer Channel) |
| 216545 | Pickup Series, Nozzle for Steel Square Tube Spray Bar |

BROOMS



Water Kit 3-Way Barbed Tee Fitting/Pickup Series 2
216694



Angle Water Nozzle Holder Plate/Severe Duty Series 2 & SD
216325



Pump for Water System Pickup Series
216540



Strainer for Water Kit Pickup Series
216542



Water Pump Mount Bracket Pickup Series 2
216673



Water Kit Pump to Filter Fitting/Pickup Series 2
216660



Water Kit Pump Filter to Hose Fitting/Pickup Series 2
216658



Water Pump 90 Degree Fitting Severe Duty Series 2
216662



Water Pump Cover Grommet for 2" Hole/Pickup Series
216538



J-Bolt for Water Tank Mount Pickup Series
216548



Motor for 116510, 116515, 116520, 116525/Pickup Series
216425



Front Rubber Skirt for 72" Pickup Series
216455



Water Pump Cover Plate Pickup Series
216539



Motor to Shaft Flange Pickup Severe Duty
216478



Water Tank Cap Pickup Severe Duty Series 2
216651



Motor Coupler Pickup Severe Duty
216421



Hydraulic Motor Cover Washer Pickup Series
216427



Nozzle for Steel Square Tube Spray Bar/Pickup Series
216545



Bearing for Main Shaft Severe Duty Pickup
216590



BROOMS



Poly Welded Core Replacement Wafers



| | | | |
|--------|--------|--------|--------|
| 48" | 60" | 72" | 84" |
| 116042 | 116047 | 116060 | 116090 |



Poly/Steel Welded Core Replacement Wafers



| | | | |
|--------|--------|--------|--------|
| 48" | 60" | 72" | 84" |
| 116043 | 116045 | 116065 | 116095 |

| Part # | Description | Qty - HD Angle Broom & Series 2 Pickup Broom |
|--------|-----------------------------------|--|
| 216417 | 26" Wafer, Poly/Steel Combo (60") | 31 |
| | 26" Wafer, Poly/Steel Combo (72") | 37 |
| | 26" Wafer, Poly/Steel Combo (84") | 43 |
| | 26" Wafer, Poly/Steel Combo (96") | 49 |
| 216415 | 26" Wafer, Poly (60") | 16 |
| | 26" Wafer, Poly (72") | 19 |
| | 26" Wafer, Poly (84") | 22 |
| | 26" Wafer, Poly (96") | 25 |
| 216410 | 26" Wafer, Steel (60") | 15 |
| | 26" Wafer, Steel (72") | 18 |
| | 26" Wafer, Steel (84") | 21 |
| | 26" Wafer, Steel (96") | 24 |

* 8" inside diameter

| Part # | Description | Qty - Severe Duty Angle Broom |
|--------|-----------------------------------|-------------------------------|
| 216209 | 32" Wafer, Poly/Steel Combo (60") | 29 |
| | 32" Wafer, Poly/Steel Combo (72") | 35 |
| | 32" Wafer, Poly/Steel Combo (84") | 41 |
| | 32" Wafer, Poly/Steel Combo (96") | 47 |
| 216207 | 32" Wafer, Poly (60") | 15 |
| | 32" Wafer, Poly (72") | 18 |
| | 32" Wafer, Poly (84") | 21 |
| | 32" Wafer, Poly (96") | 24 |
| 216205 | 32" Wafer, Steel (60") | 14 |
| | 32" Wafer, Steel (72") | 17 |
| | 32" Wafer, Steel (84") | 20 |
| | 32" Wafer, Steel (96") | 23 |

* 10" inside diameter



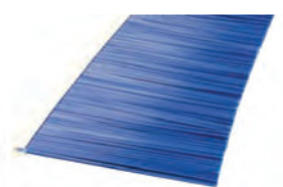
Pickup Broom Series 2 Gutter Brush Assembly
(steel bristle)
116555



Pickup Broom Replacement Gutter Brush (11")
(poly bristle)
216605



Pickup Broom Replacement Gutter Brush (15")
(steel bristle)
216600



Push Broom Replacement Bristle Kit
(Qty 11 Blue)
36" Bristles 216515
and 60" Bristles 216506



| Part # | Description |
|--------|--|
| 216442 | 18" Mini Wafer, Poly (42") |
| | 18" Mini Wafer, Poly (48") |
| | 18" Mini Wafer, Poly (53") |
| 216864 | 18" Mini Wafer, Poly/Steel Combo (42") |
| | 18" Mini Wafer, Poly/Steel Combo (42") |
| | 18" Mini Wafer, Poly/Steel Combo (42") |

* 6 3/8" inside diameter

BRUSH CUTTERS

Extreme Duty 72" Cutter Blade Kit
(4 with hardware)
203027E-KIT



TECH TIP
Why do my blades have a nick in them?
 The blades knock against each other during normal use. This does not detract from their useful life.

Severe Duty 60" Excavator Cutter Blade Kit
(3 with hardware, also fits older 60" model)
203029-KIT



Heavy Duty 72" Cutter Blade Kit
(3 with hardware, also fits older 60" model)
203027H-KIT



Severe Duty 72" Cutter Blade Kit
(4 with hardware) 203025-KIT



36" 3 Blade Kit
(3 with hardware, all models) 203620-KIT



42" 3 Blade Kit
(3 with hardware, all models) 203670-KIT



50" Blade Kit
(3 with hardware, all models) 203720-KIT



60" Blade Kit
(3 with hardware, all models) 203028-KIT



Brush Cutter Bearing Grease
Shell Gadus S3 V220C2 203069

BRUSH CUTTERS



**Hydraulic Motor 160cc
Cross Port Relief Valve)**
203711-1



**Standard 4 Link Discharge
Chain 72"**
203045



Blade Carrier Bolt
(1/2" Diam x 1.75" Long for
3/4" Style Blade Carrier)



TECH TIP

How long do the blades last?

This depends on their material, usage, and age. It varies. Check your blades frequently and change them if the cut quality is affected.



Blade Nut
(extreme & standard models) 203030



Blade Pivot Bolt
(extreme & standard models) 203035



**Motor Cover/Deflector/
Inspection Cover Bolt** 203006



Direct Drive Main Seal
(for 2 5/8" Spindle) 203085



**Direct Drive Main Seal (large
bearing style, for 3" spindle)** 203086



Motor & Flange Installation Bolt
(for Magneto Motor only) 203167



BRUSH CUTTERS



Motor, 80cc C-Flange
(with Crossport Relief Valve)
203760



Large Valve Cartridge High Flow & Severe Duty
203424



Valve Cartridge for Relief Block Valve
(All SS & EX HD & ED Standard Flow Motors)
203136-1



Extreme Duty Series 2 Eaton Hydraulic Motor 160cc
(with Dual Reliefs & Hoses Assembly)
203785



Safety Chain & Clevis 203048



Inspection Cover 203008



Long Flange Bolts
for the modern C-Flange motors) 203169



Housing Bot & Nut 3/4" 203056



Flange to Housing Bolt Severe Duty
(for Mini Excavator only)
299331



Valve Block
(fits Standard Flow Motors)
203770



BRUSH CUTTERS



Extreme Duty Series 2 72" Blade Carrier

(4 Blades, 3/4" Bolt Holes)

203044-2



Motor 100cc C-Flange

(with Crossport Relief Valve)

203763



Piston Motor 80cc

Severe Duty Mini Excavator
(with Integrated Relief Block)

203800



Skid Shoe Bolt
Severe Duty

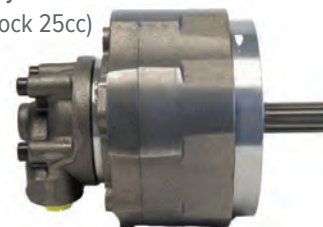
203435



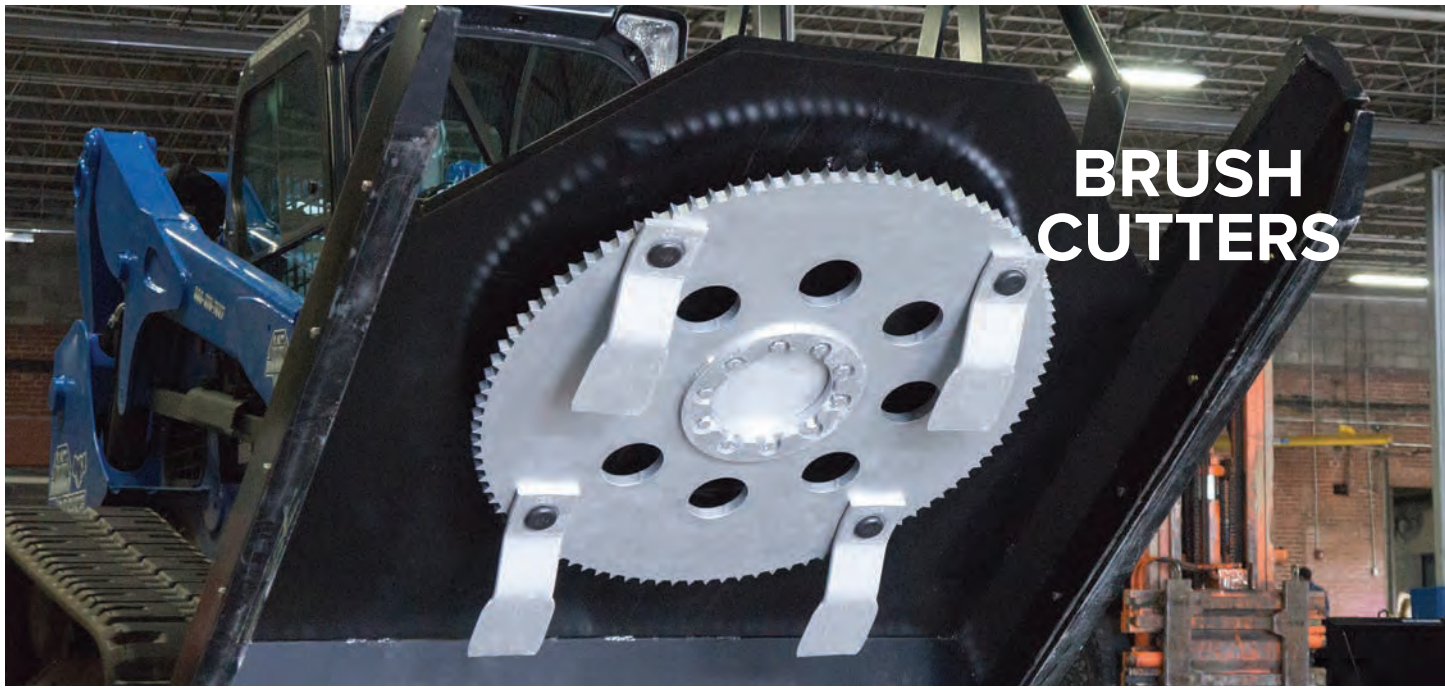
High Flow Hydraulic Motor

(BM6, No Block 25cc)

203407-H



| PART # | DESCRIPTION |
|-------------|--|
| 203760 | Motor, 80cc C-Flange, with Crossport Relief Valve |
| 203510-2 | Deck Weldment 72" Extreme Duty Series 2 Open Front |
| 203048 | Safety Chain & Clevis |
| 203008 | Inspection Cover |
| 203044-2 | Extreme Duty Series 2 72" Blade Carrier 4 Blade (3/4" Bolt Holes) |
| 203785 | ED Series 2 Eaton Hydraulic Motor 160cc with Dual Reliefs and Hoses Assembly |
| 203005-2 | Motor Cover for 72" Extreme Duty Series 2 |
| 203136-1 | Valve Cartridge for Relief Block Valve on All SS & EX HD & ED Standard Flow Motors |
| 203763 | Motor 100cc C-Flange with Crossport Relief Valve |
| 203169 | Long Flange Bolts (Fits C-Flange Std Flow Motors) |
| 203800 | Mini Excavator, Severe Duty, 80cc Piston Motor with Integrated Relief Block |
| 203811 | Severe Duty, Flange to Housing Bolt |
| 203770 | Valve Block Fits Standard Flow Motors |
| 203424 | High Flow & Severe Duty, Large Valve Cartridge |
| 203407-H | Severe Duty Piston Motor (250cc) with High Pressure Seal |
| 203056 | Housing Bolt & Nut 3/4" |
| 203703-1 | High Flow Hydraulic Motor (BM6), No Block 250cc |
| 203435 | Severe Duty Skid Shoe Bolt |
| 203711-1 | Hydraulic Motor 160cc with High Volume Cross Port Relief Valve, Large Output Shaft Magneto Mount |
| 203775 | Gasket Fits C-Flange (Square) Motor to Direct Drive Housing |
| 203062 | Blade Carrier Bolt (1/2" Diam x 1.75" Long for 3/4" Style Blade Carrier) |
| 203703 | High Flow Hydraulic Motor (BM6), No Block 200cc |
| 203078 | Blade Washer Large for 3/4" Thick Carriers (Heavy/Extreme SS & All Mini Models) |
| 203717 | High Flow Hydraulic Relief Block (Fits BM6) |
| 203660 | Mini Ex, Discharge Deflector 42" |
| 203809 | Mini Excavator, Severe Duty Shaft Seal 80cc Fits IAM Motors |
| 203031 | Blade Bolt Fits 3/4" Thick Blades Severe Duty 60" Excavator Cutter Only |
| 203635 | Direct Drive Lower Bearing & Race, Fits 2.36" Spindle |
| 203638 | Direct Drive Main Seal, Fits Mini Cutters SN-63026 & Up |
| 203100 | Star Lock Washer |
| 203405-H | Severe Duty, Piston Motor (200cc) |
| 202836 | Direct Drive Severe Duty Series 2 Bolt-Hex Head |
| 203650 | Mini-Ex Blank 18" x 19" Mount Plate, Fits 36" - 50" Cutters |
| 203105 | Direct Drive Spindle Nut Lower |
| 203919 | Split Teflon Cartridge O-Ring for Standard Flow Relief Valve |
| 203156 | Motor Flange (Fits BM6 and C-Flange Motors to Old Style Housing) |
| 203068 | Direct Drive Spindle Only Tapered Style |
| 203812 | Severe Duty Shaft Seal for 150cc 200cc 250cc HC05 HPS Motors |
| 203407-H/IR | Severe Duty Piston Motor 250cc with High Pressure Seal & Integrated Reliefs |



BRUSH CUTTERS

TECH TIP
What is the big noise when I'm turning off the cutter?
 This is the hydraulic braking system. The relief valves help slow the blade carrier down quickly so the operator is not endangered when exiting the machine.



Motor 160CC C-Flange with Crossport Relief Valve
 203768



Direct Drive Bellow Assembly
 (SM straight thread for grease outlet)
 203109



Hydraulic Hose Extension
 203038



Severe Duty Cutter Pressure Gauge (Series 2 Gauge)
 203427-1



Brush Cutter SD Series 2 203407-H/IR Piston Motor
 (250CC w/High Pressure Seal & Integrated Reliefs)



Brush Cutter Direct Drive Assembly
 (Fits 3/4" blade carrier bolts)





Direct Drive Bearing and Race 4.5" Diameter,
(for 2 5/8" spindle) **203075**



Direct Drive Lower Bearing and Race 5" Diameter
(for 3" spindle) **203074**



Relief Block White O-Ring **203908**



Housing Bolt and Nut 1/2" **203061**



Wire Protection Lower Bushing & Bolt **203914**



Blade Carrier Bolt for 10-Hole Spindle (long style) **203042**



BUCKETS



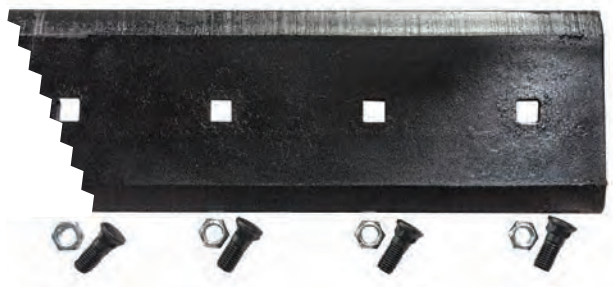
Bolt, 5/8-11x2" GR8 Plow Bolt
(for All Bolt-On Edges, Nut is 109177)
109176



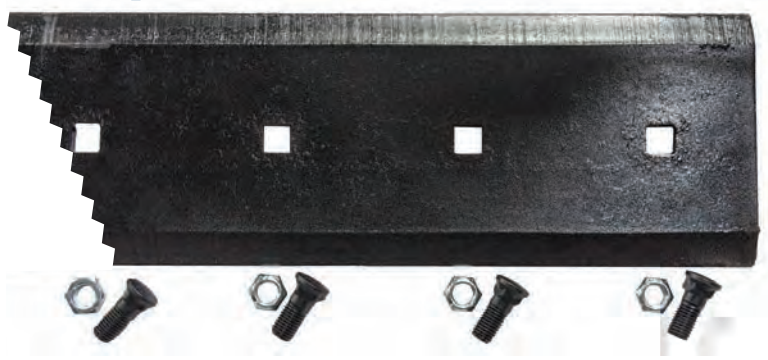
Tooth Retainer for 230 Side Pin Tooth
210006



72" Bolt-on Edge Kit
309125



96" Bolt-on Edge Kit
309150



Tooth Heavy Cast (230 Side Pin)
210005



Tooth and Shank Assembly Flush Mount (230 Side Pin)
210015



TECH TIP

Maintain your teeth:
Check for loose teeth regularly. If they are loose, replace the pin.

Bolt-on Edge Kits

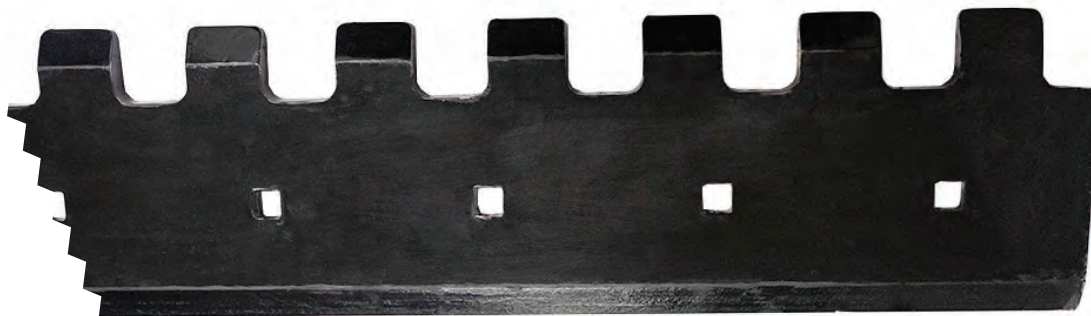
| Part # | Description |
|--------|-------------|
| 309104 | 36" |
| 309105 | 38" |
| 309106 | 42" |
| 309107 | 44" |
| 309108 | 45" |
| 309103 | 47" |
| 309109 | 48" |
| 309110 | 50" |
| 309111 | 52" |
| 309112 | 54" |
| 309113 | 56" |
| 309115 | 60" |

| Part # | Description |
|--------|-------------|
| 309116 | 63 1/2" |
| 309120 | 66" |
| 309125 | 72" |
| 309127 | 74" |
| 309130 | 78" |
| 309133 | 80" |
| 309140 | 84" |
| 309145 | 90" |
| 309147 | 94" |
| 309150 | 96" |
| 309155 | 102" |



Shop online at
www.BDAParts.com

SERRATED EDGE KITS



Bolt-on Edge Kits

| Part # | Description |
|--------|-------------|
| 308203 | 36" |
| 308205 | 42" |
| 308207 | 44" |
| 308202 | 48" |
| 308204 | 60" |

| Part # | Description |
|--------|-------------|
| 308206 | 66" |
| 308208 | 72" |
| 308210 | 78" |
| 308212 | 84" |



Serrated Edge Kits

308203, 308205, 308207, 308202,
308204, 308206, 308208, 308210, 308212



TOOTH BARS



36" BD Buckets
109010



Tooth Bars for Buckets

| Part # | Description |
|--------|-------------|
| 109010 | 36" |
| 109015 | 42" |
| 109017 | 44" |
| 109020 | 45" |

| Part # | Description |
|--------|-------------|
| 109018 | 48" |
| 109024 | 52" |
| 109025 | 60" |
| 109030 | 66" |

| Part # | Description |
|--------|-------------|
| 109035 | 72" |
| 109040 | 78" |
| 109045 | 84" |

COLD PLANERS



Cold Planer Control Box (Tilt/Sideshift Control Switch)
160401



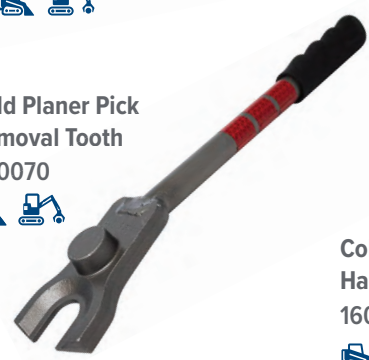
Cold Planer HF Hydraulic Motor
260010



Cold Planer Wire Harness Assembly to use with Host Machine

| Host Machine | 3-Line | 5-Line |
|--------------|--------|--------|
| Case | 160400 | 160405 |
| JCB | 160400 | - |
| Volvo | 160400 | - |
| GEHL | 160400 | - |
| Bobcat | 160415 | 160410 |
| Cat | 160425 | 160420 |
| Kubota | 160427 | - |
| Deere | 160435 | 160430 |

Cold Planer Pick Removal Tooth
260070



Cold Planer Wiring Harness
160402



Cold Planer Motor End Plate Gasket
260011



Cold Planer Tooth Holder
260003



Straight Tooth
260000



Cold Planer Grooved Tooth
260001



Fine Cut Tooth
260002



Concrete Tooth
260004



Fine Cut Concrete Tooth
260005



Plumbing Fitting (to Connect Motor Return or Coupler to Hose)
260302



Motor Fitting (Fits High Flow Model)
260303



DISC MULCHERS

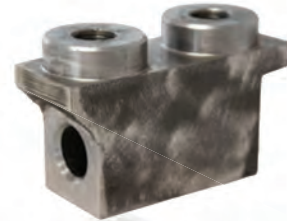
H-Valve
203566



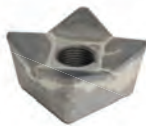
Chipping Tooth for
1033** Series
(44" Requires 30; 60"
Requires 44
203550



Tooth Holder (Top &
Bottom)
(44" Requires 20; 60"
Requires 32)
203553



Carbide Tooth for
1033** Series
(44" Requires 30; 60"
Requires 44
203551



Tooth Sleeve Threaded
203552



Tooth Bolt (Top &
Bottom)
(44" Requires 20; 60"
Requires 32)
203554



Tooth Sleeve
203555



DRUM MULCHERS

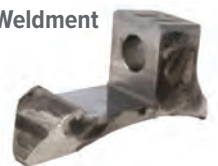
Chipping Tooth
290100



Tooth Carbide 1-Sided
290101



Tooth Holder Weldment
1.56"
290200



| | Tooth Type | |
|---------------|-------------------|------------------|
| Tooth Holder | Chipping (290100) | Carbide (290101) |
| 1.5" (209200) | 290100-KIT | 290101-KIT |
| 2" (290201) | 290103-KIT | 290104-KIT |

Bolt for Tooth
(1"-14 x 3.5")
290107



Tooth Bolt Socket Head
(1"-14 x 3")
290108



Bolt for Tooth
(1"-14 x 2.5")
290106



Tooth Bolt Hex Head
(1"-14 x 3")
290105



Tooth Spacer for
Chipping Tooth
290110



CONVERSION INTERFACE ADAPTERS



For use with mini universal mount machine to Bobcat MT50.
125004



For use with skid steer to blank back; no plate, just frame tubing.
125055-00



For use with universal mini mount machine to universal skid steer.
125010



For use with John Deere 600/700 mount machine to universal skid steer mount.
125110



For use with John Deere 400/500 mount machine to universal skid steer mount.
125108



For use with skid steer mount machine to Bobcat MT mount.
125013



For use with Avant/Multi-one mount machine to full size skid steer mount.
125020



For use with old style New Holland mount machine to full size skid steer mount.
125030



Conversion Interface Blank 24x24 for Mini Excavator to Skid full Skid Steer Mount
125053



CONVERSION INTERFACE ADAPTERS



For use with blank 18x19 mini excavator machine to skid steer mount (45° angle).
125050



For use with Euro AG/JD Global machine to universal skid steer mount.
125075



For use with Bobcat MT50 machine to mini universal skid steer mount.
125005



For use with ASV PT30/RT40 skid steer mount machine to mini universal mount.
125011



For use with Avant/Multi-one mount machine to mini universal mount.
125025



For use with Avant/Multi-one mount machine to full size skid steer mount
125020



Quick mount plate 1/2" that fits skid steers.
113006



Quick mount plate 1/4" that fits skid steers.
113005



COUPLERS

| Attachment | Female Coupler | Male Coupler | Case Drain* |
|--------------------------------------|----------------|--------------|------------------|
| Angle Broom, HD Series 2 | 224020 | 224021 | |
| Auger | 224011 | 224012 | |
| Backhoe | 224005 | 224006 | |
| Bale Squeeze | 224005 | 224006 | |
| Breaker | 224011 | 224012 | |
| Broom, Pickup | 224020 | 224021 | |
| Broom, Severe Duty | 224020 | 224021 | |
| Brush Cutter | 224011 | 224012 | 224060, 224062 |
| Brush Cutter 60" ED Excavator | 224011 | 224012 | FF-371-8FP |
| Brush Cutter, Optional High Flow** | 224055 | 224057 | 224060, 224062 |
| Bucket, 4-in-1 | 224007 | 224008 | |
| Bucket, Dispensing | 224005 | 224006 | |
| Bucket, Front Dump | 224005 | 224006 | |
| Cold Planer | 224011 | 224012 | 224060, 224062 |
| Cold Planer, High Flow** | 224055 | 224057 | 224060, 224062 |
| Disc Mulcher 3/4" STD* | 224055 | 224057 | 224060 or 224062 |
| Dispensing Bucket | 224005 | 224006 | |
| Dozer Blade, Current | 224011 | 224012 | |
| Drum Mulcher 3/4" STD" | 224055 | 224057 | 224060 or 224062 |
| Grapple, Ext Duty or Root | 224005 | 224006 | |
| Grapple Fork, 4,000 lbs | 224007 | 224008 | |
| Grapple Fork, Severe Duty 10,000 lbs | 224005 | 224006 | |
| Grapple Rake HD | 224005 | 224006 | |
| Grapple Rake, Severe Duty | 224005 | 224006 | |
| Grapple, HD Bucket | 224007 | 224008 | |
| Grapple, HD Rake | 224005 | 224006 | |
| Grapple, SD Bucket or Root | 224015 | 224016 | |
| Hydraulic Pallet Fork | 224005 | 224006 | |
| Log Grapple | 224005 | 224006 | |
| Log Splitter, 25 ton | 224005 | 224006 | |
| Log Splitter, 35 ton | 224009 | 224010 | |
| Material Spreader | 224011 | 224012 | |

| Attachment | Female Coupler | Male Coupler | Case Drain* |
|--------------------------------------|----------------|--------------|------------------|
| Mat Grapple | 224005 | 224006 | |
| Multi-Blade | 224011 | 224012 | |
| Nusery Fork, Severe Duty | 224005 | 224006 | |
| Plate Compactor | 224011 | 224012 | |
| Post Driver, Hammer Style | 224020 | 224021 | |
| Post Driver, Vibrating | 224011 | 224012 | 224060 or 224062 |
| Power Rake | 224005 | 224006 | |
| Rock and Concrete Grinder | 224020 | 224021 | 224060 or 224062 |
| Rock Bucket Grapple, ED, HD, SD | 224005 | 224006 | |
| Roof Truss Jib | 224009 | 224010 | |
| Rototiller | 224011 | 224012 | |
| Snow Blade (Multi & Trip Edge) | 224011 | 224012 | |
| Snow Blower | 224011 | 224012 | |
| Stump Grinder | 224011 | 224012 | 224060 or 224062 |
| Stump Grinder (Optional High Flow)** | 224055 | 224057 | 224060 or 224062 |
| Rototiller | 224011 | 224012 | |
| Tree Puller, Standard Duty | 224009 | 224010 | |
| Tree Shear | 224009 | 224010 | |
| Trencher | 224011 | 224012 | |
| Trip Edge Blade | 224011 | 224012 | |
| Vibratory Roller | 224005 | 224006 | |



* Must ask customer if the host machine has a male or female case drain fitting. All skid steers have 3/4" Couplers.

** This is a guideline only. Some machines use 5/8" couplers for high flow and others use 1/2" couplers. Confirm with customer as to what they have.

COUPLERS

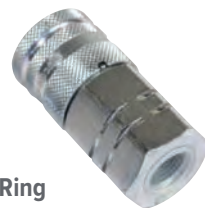
Male Flat Face 5/8"
Body, 3/4" Oring #12
224052



Female Flat Face 5/8"
Body, 3/4" Oring #12
224050



Female Flat Face,
1/2" Body, 5/8" O-Ring
#10
224020



Female Flat Face,
1/2" Body, 1/2" O-Ring
#8
224009



Male Flat Face,
1/2" Body, 3/4" O-Ring
#12
224012



Male Flat Face,
1/2" Body, 5/8" O-Ring
#10
224021



Male Flat Face,
1/2" O-Ring
#8
224010



Female Flat Face,
1/2" Body, 3/4" O-Ring
#12
224011



Female Flat Face, 3/4" Body,
3/4" O-Ring #12 224055



Female Flat Face, 3/8" Body,
#8 O-Ring 224060



Vibrating Post Driver QC
Adapter, Supply & Return 200500



Male Flat Face, 3/4" Body,
3/4" O-Ring #12 224057



Male Flat Face, 3/8" Body,
#8 O-Ring 224062



Vibrating Post Driver
QC Adapter, Case Drain 200505



HOSES



**Complete Hose Kit for
84" Rock Bucket, HD Grapple**
(fits all 84" heavy duty grapple models)
208578



TECH TIP
Check hydraulic hoses for signs of deterioration. Look for indications of wear, such as cracking, blisters, and bubbles. Catching signals early helps avoid hose failure later on.



Short Hose Assembly for Brush Cutters
(All low flow models) **203039**



Short Hose Assembly for Augers **205617**



Machine Hose for SD Root Grapple **206252**



Machine Hose for SD Root Grapple
(18" longer than standard) **206253**



Machine Hose Set w/ Sleeve for Grapple (no couplers) **206360**



90" Machine Hose for Grapple
(18" longer than standard) **206361**



1/2" Auger Hoses with Couplers, 108" Long **105060**



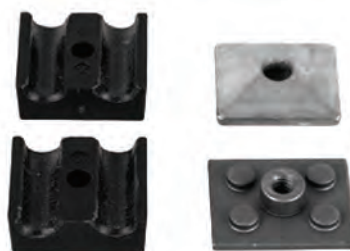
Mini Series 1/2" Auger Hoses with Couplers, 65" Long **105061**



HOSES



**Complete Hose Kit for
78" Rock Bucket HD Grapple**
208577



Hose Clamp
(fits 3/8" dual)
206810



**Clamp & Cylinder Hose Set for 72" Rock
Bucket HD Grapple** (fits heavy
duty rock buckets and grapples) 208565



**Hoses to Connect Rock Bucket HD
Grapple to Machine** (fits all heavy
duty rock buckets and grapples) 208585



**Hose Kit for 78" & 84" STD Rock
Bucket Grapple** (fits all heavy
duty grapples and rock buckets) 208255



Hose Set for 72" Hydraulic Angle Broom
(standard duty models only, motor to manifold) 216116



Hose Set for 72" Manual Angle Broom
(fits manual models with model numbers 1160**) 216135



**Hose Kit for 66" & 72"
Rock Bucket Standard Grapple** 208250



**Complete Hose Kit for 66"–72"
Rock Bucket, HD Grapple** 208576



HOSES




Machine Hose 223623
(for Dozer Blade Series 2)






Long Cylinder Hose for Mini Series Grapple 206097
(small port end)





Hose for Root Grapple 206420
(requires 2, uses couplers 224070 & 224072)



Double Clamp Short Cylinder Hose for 50" Mini Grapple 206510
(requires 2)





Double Clamp Long Cylinder Hose for 50" Mini Grapple 206511
(requires 2)





Extra Long Hose Set for Severe Duty Grapple Bucket 206363





T Fitting to Cylinder Short Hose for SD Grapple Bucket 206369
(fits 72", 78", & 84")






T Fitting to Cylinder Long Hose for SD Grapple Bucket 206370
(fits 72", 78", & 84")






Hose Set for Tree Shear 228030
(includes sleeves, no couplers)





Hoses for Tree Puller 227010
(couplers not included)



HOSES



72" Brush Cutter Severe Duty Series 2 only 203470
Brush Cutter Hose Set (Includes couplers and H Valve)



Brush Cutter Hose Set Assembly 203037
for High Flow Extreme Cutters



Brush Cutter Severe Duty 203410
Hose set with couplers



Brush Cutter Hose Set Assembly 203039
Low Flow with Sleeve, No couplers




Brush Cutter Hydraulic Hose Extension 203038
(Requires 2)




HOSES



Power Rake HD S2 Hose Kit 132405
(for Manual Angle for Mini Machines)





Hose Kit for Hydraulic Breakers HB95-HB210 135425
(for Skid Steer - 108")





Hose Kit for Hydraulic Breakers HB50-HB210 and C310 Plate Compactors 135405
(fits Excavator & Mini Skid Steer)




Hose Kit, Fits Hydraulic Breaker HB300 and C410 Plate Compactor 135410
(for Excavators)




Hose Kit for Hydraulic Breaker HB300 135430
(for Skid Steer - 108")




Hose Wrap

| Part # | Description | Size |
|--------|------------------------|--------------------|
| 203786 | Brush Cutter Hose Wrap | 2 3/4" ID 4ft Long |

HOSE PROTECTION SYSTEMS



Grapple Hose Sleeve
Only (by the foot)
206327



Grapple Hose Saver Kit
206800



16" Single Spring Hose Saver
206850



25" Single Spring Hose Saver
206852



16" Double Spring Hose Saver
206855



25" Double Spring Hose Saver
206857



Hose Clamp
(fits 1/4" dual hoses)
206805



Hose Clamp
(fits 1/2" dual hoses)
206815



Hose Clamp
(fits 3/4" dual hoses)
206820



Hose Clamp
(fits 1" dual hoses)
206825

HYDRAULIC BREAKERS



TECH TIP
 Limit bending the tool bit during operation. Don't use the tool bit to pry the material. Do use the correct working angle (90°) when breaking material. Don't attempt to break material using the pulling force of the machine.



Chisel

| | | | | | | | | | | |
|------------|--------|--------|--------|--------|--------|--------|--------|---------|---------|---------|
| Product # | 235000 | 235005 | 235010 | 235015 | 235020 | 235025 | 235030 | 235035 | 235050 | 235042 |
| Fits Model | HB50 | HB95 | HB165 | HB210 | HB300 | HB400 | HB530 | HB950 | HB1400 | HB1800 |
| Weight | 7 lbs | 14 lbs | 24 lbs | 34 lbs | 47 lbs | 59 lbs | 69 lbs | 111 lbs | 187 lbs | 247 lbs |



Moil

| | | | | | | | | | | |
|------------|--------|--------|--------|--------|--------|--------|--------|---------|---------|---------|
| Product # | 235001 | 235006 | 235011 | 235016 | 235021 | 235026 | 235031 | 235036 | 235051 | 235040 |
| Fits Model | HB50 | HB95 | HB165 | HB210 | HB300 | HB400 | HB530 | HB950 | HB1400 | HB1800 |
| Weight | 7 lbs | 14 lbs | 24 lbs | 34 lbs | 47 lbs | 59 lbs | 69 lbs | 111 lbs | 187 lbs | 247 lbs |



Pyramid

| | | | | | | | | | | |
|------------|--------|--------|--------|--------|--------|--------|--------|---------|--------|--------|
| Product # | 235002 | 235007 | 235012 | 235017 | 235022 | 235027 | 235032 | 235037 | 235054 | 235044 |
| Fits Model | HB50 | HB95 | HB165 | HB210 | HB300 | HB400 | HB530 | HB950 | HB1400 | HB1800 |
| Weight | 7 lbs | 14 lbs | 24 lbs | 34 lbs | 47 lbs | 59 lbs | 69 lbs | 111 lbs | - | - |



Auto Lubrication System
 (fits all breaker models)
 (grease sold separately)
 135500



Gas Charging Kit
 235200



Optional Post Driving Adapters

| | | |
|------------|--------------------------------|--------|
| Fits HB210 | For posts up to 5.5" diameter | 235019 |
| Fits HB300 | For posts up to 5.75" diameter | 235029 |

TECH TIP
 The post driving adapter can be added to any Blue Diamond® Hydraulic Breaker in under 10 minutes! No welding is required.



Optional Post Driving Adapters
 (includes blunt bit cables and mounting hardware)
 235029



Chisel/Tool Paste 14oz. Tube
 235610



PALLET FORK TINES & PARTS

Brick & Block Tines

| CLASS | SIZE | CAPACITY | PART # |
|-------|-------------------|----------------|--------|
| 2 | 2" x 2" x 48" | 3,530 lbs/pair | 114180 |
| 2 | 1 1/2" x 2" x 48" | 3,530 lbs/pair | 114178 |

| CLASS | SIZE | CAPACITY | PART # |
|-------|-------------------|-----------------|--------|
| 2 | 1 1/4" x 4" x 36" | 3,530 lbs/pair | 114109 |
| 2 | 1 1/4" x 4" x 42" | 3,530 lbs/pair | 114115 |
| 2 | 1 1/4" x 4" x 54" | 3,530 lbs/pair | 114118 |
| 2 | 1 3/8" x 4" x 48" | 4,200 lbs/pair | 114117 |
| 2 | 1 1/2" x 4" x 42" | 5,250 lbs/pair | 114113 |
| 2 | 1 1/2" x 4" x 48" | 5,250 lbs/pair | 114120 |
| 2 | 1 1/2" x 4" x 54" | 5,500 lbs/pair | 114121 |
| 2 | 1 1/2" x 4" x 60" | 5,250 lbs/pair | 114130 |
| 2 | 1 3/4" x 4" x 42" | 6,800 lbs/pair | 114123 |
| 2 | 1 3/4" x 4" x 48" | 6,990 lbs/pair | 114125 |
| 2 | 1 3/4" x 4" x 54" | 6,800 lbs/pair | 114133 |
| 2 | 1 3/4" x 4" x 60" | 6,990 lbs/pair | 114135 |
| 2 | 1 3/4" x 4" x 72" | 6,990 lbs/pair | 114145 |
| 2 | 1 3/4" x 4" x 84" | 6,990 lbs/pair | 114147 |
| 2 | 1 3/4" x 4" x 96" | 6,990 lbs/pair | 114149 |
| 3 | 1 3/4" x 5" x 48" | 6,990 lbs/pair | 114210 |
| 3 | 1 3/4" x 5" x 60" | 8,200 lbs/pair | 114200 |
| 3 | 2" x 4" x 48" | 8,400 lbs/pair | 114203 |
| 3 | 2" x 5" x 60" | 10,000 lbs/pair | 114205 |
| 3 | 2" x 5" x 72" | 10,000 lbs/pair | 114250 |
| 3 | 2" x 5" x 84" | 10,000 lbs/pair | 114255 |
| 3 | 2" x 5" x 96" | 10,000 lbs/pair | 114260 |

Locking Mechanism for Flip-Style Pin Lever Tines
 (1 per tine)
214012

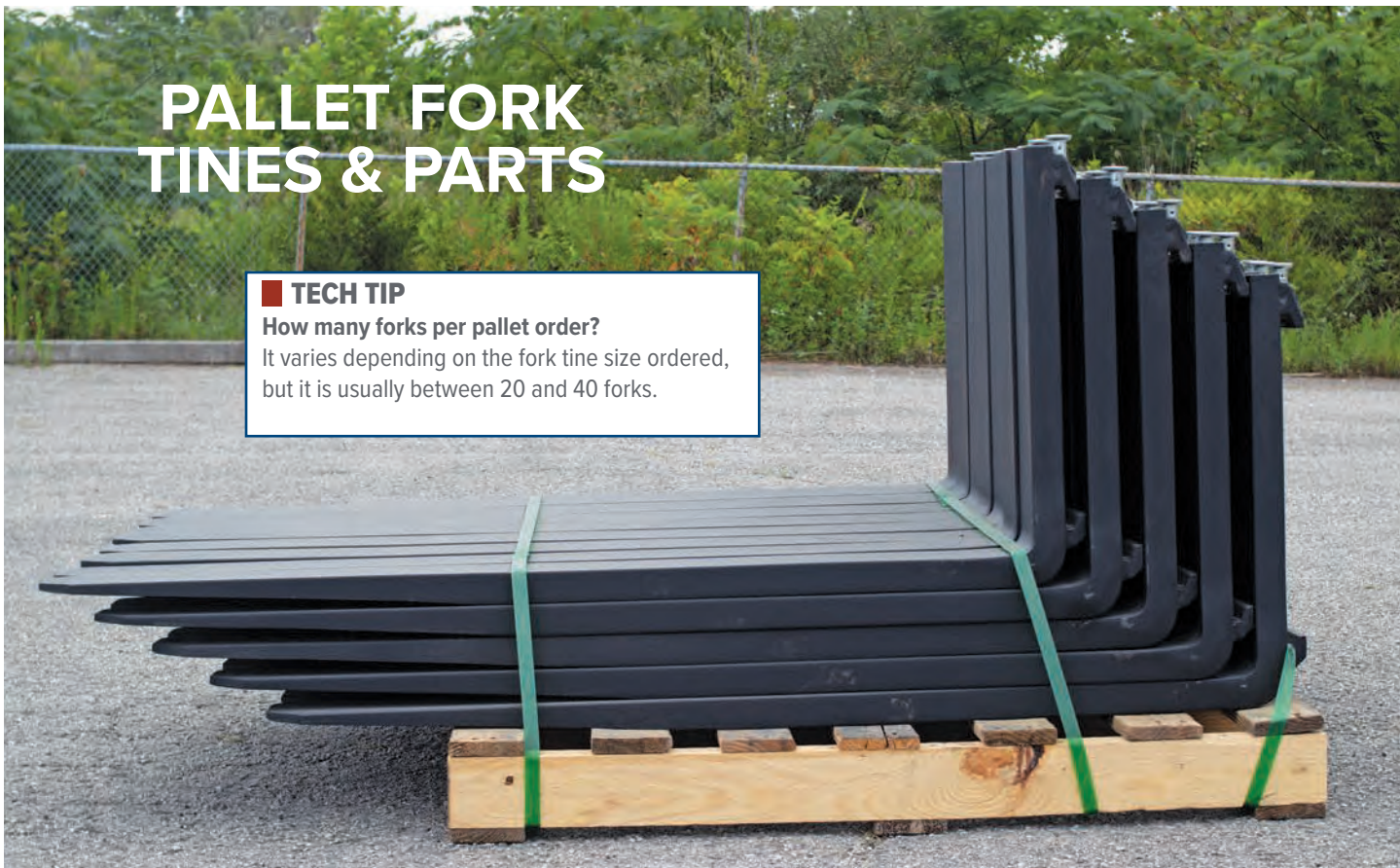
Hydraulic Adjusting Fork Cylinder
214105

PALLET FORK TINES & PARTS

TECH TIP

How many forks per pallet order?

It varies depending on the fork tine size ordered, but it is usually between 20 and 40 forks.



1 1/2" x 4" x 48" Tine

114120



1 1/2" x 4" x 60" Tine

114130



1 3/4" x 4" x 60" Tine

114135



1 3/4" x 4" x 72" Tine

114145



STUMP GRINDERS

TECH TIP

How long do teeth last?

Teeth can be turned a few times, so they last a good amount of time. The exact time depends on the material and time used. Check them regularly, turn them as needed, and always replace chipped or dull teeth.



Greenteeth® for Piston Style Stump Grinder 204505



Greenteeth® Pocket, Angle 204510



Greenteeth® Pocket, Reverse 204512



Greenteeth® Pocket, Straight 204514



Stump Grinder Bolt for Tooth Pocket 204508



Note: Kit shown #332520



Motor Side Hose (solenoid to motor, fits 72"-84", requires 2)

232065



Bearing Assembly 4 Bolt Drive Side (fits 1.5" shaft) 232050



Bearing, Grease Zerk Plug 232055



Replaceable Tooth Tapered Carbide Long 232118



Replaceable Tooth Tapered (No nut required) 232117



Weld Nut 232119



Hydraulic Angle Kit POWER RAKES

| | Severe Duty | Heavy Duty Series 2 - Mini 58" Hoses | Heavy Duty Series 2 - Full Size 58" Hoses | Extreme Duty/ Severe Duty Series 3 |
|-----------|-------------|--------------------------------------|---|------------------------------------|
| 48" & 60" | - | 332460-58 | 332460-85 | - |
| 72" | 332061 | 332462-58 | 332462-85 | 332520 |
| 84" | 332061 | - | - | 332520 |
| 96" | 332062 | - | - | 332525 |
| 120" | 332063 | - | - | 332530 |

Hydraulic Angle Kits are also available for 3 point hitch models, contact us for further information

| PART# | MODEL |
|--------|---|
| 132405 | HD Series 2 Mini Machines w/Manual Angle |
| 132005 | HD Series 2 w/Manual Angle |
| 132406 | HD Series |
| 132410 | HD Series 2 for Bobcat MT, TX2000 & others needing longer hoses |
| 232469 | HD Series 2 Full Size Skid Steer |
| 132065 | Hose Kit for 72" to 96" Rakes and Manual Angle |
| 132066 | Hose Kit for 120" Rakes and Manual Angle |
| 132055 | Case Drain Line Severe Duty units under 96" |
| 132056 | Case Drain Line Severe Duty units under 96" and Larger |
| 232116 | Replaceable Tooth Tapered Carbide Short 3/4" - 16" X 1.75" |

POWER RAKES



#50 Double Strand
(fits Heavy Duty Models)
232019



Solid Laminated Wheel
(fits All Chain Drive Models)
232075



Hydraulic Hose Fitting for Case Drain
(9/16" Female Oring x 3/4" Male Oring)
232069



Skid Shoes Pair with Hardware
132050



Hydraulic Angle Kit Hardware Pack
(1 ea - 3 Bolts, 2 Nylock Nuts)
232061



GRAPPLES



Severe Duty/Extreme Duty Adapter to Replace 206305 with 206306
(2 per Cylinder)
206307



Cylinder Adapter #4 Oring x #4 Pipe
(to go with 206306 & 206307 When Replacing 206305 Cylinder)
206308



Pivot Pin 1 1/4" x 5 1/4" (Fits Root Grapple, Grapple Bucket, Severe Duty Root Grapple 2019+ & 4 in 1 Cylinder)
206343



GRAPPLES



Cylinder 2" Bore, 10" Stroke
(1/4" ports, fits SD Grapple Bucket)
206306



Ag Style 2" Bore x 8" Stroke Maxim Cylinder
(Light & Heavy Duty Grapples)
206110



Cylinder 2" x 10" Stroke
(for Mini Series Rev0001)
207003



Extreme / Severe Bulk Head Branch T Fitting
(joins Machine Hoses to Grapple)
206355



90 Degree Elbow
(for Turning Straight Couplers 90 Degrees)
206362



Grapple Cylinder

| Part# | Description |
|--------|---|
| 207002 | Cylinder for Mini Series Rev 00002 2" x 4.5" Stroke |

SILT FENCE

Fabric
(by the foot)
275108



Fabric
(bulk roll, 1,500 feet)
275110



SCREENING BUCKETS



Hydraulic Motor AGMP 125
(with SAE Spline Shaft 4-40HE & 4-47HE)

245215



Hydraulic Motor AGMP 125
(with SAE Spline Shaft 3-33E)

245200



Hydraulic Motor AGMP 150
(with SAE Spline Shaft 3-47S)

245205



Hydraulic Motor AGMP 200
(with SAE Spline Shaft 3-60S)

245210




Carbon Belt Pulley
8MDC3645 245050




Carbon Belt Pulley
IMDC21TB46 245055




Locking Ring 20 mm 245030




Carbon Belt 8MDC-24 245070




Gates Carbon Belt 8MDC-36 245065




Carbon Belt 8MDC-40 245060



SCREENING BUCKETS



Bearing SLFE7/8C106
245130



Bearing SLFE25C104
245120



Bearing SLFT30C100
245125



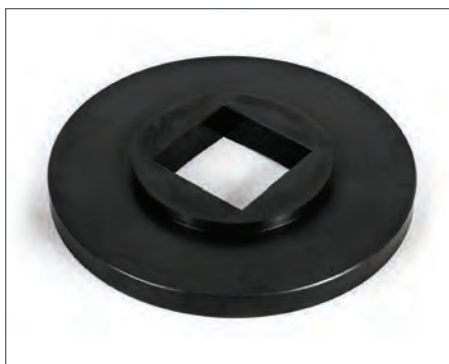
Taper Bushing 2012-25 245100



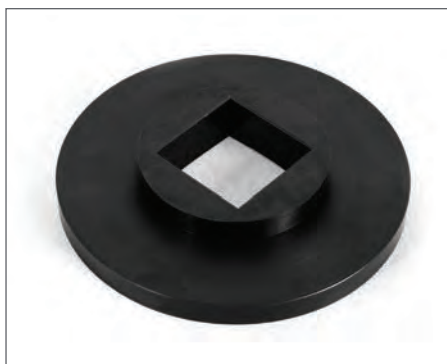
Taper Bushing 2012-30 245105



Rosta Belt Roller 245150



End Cap 15 mm 245025



End Cap 20 mm 245020



Poly Star Blue 245000



TRACTOR CUTTERS

Blades are sold in pairs.

3.5' Tractor Cutter Blade
503248



4' Tractor Cutter Blade
503251



5' Tractor Cutter Blade
503254



Tractor Cutter Blade
503250



8' Reverse Cutter Tractor Blade
503252



10' Reverse Cutter Tractor Blade
503256



Tractor Cutter Left-Hand Wing Blade
503155



Tractor Cutter Right-Hand Wing Blade
503260



6' Tractor Cutter Blade
503258



7' Heavy Duty Tractor Cutter Blade
503262



6' Heavy Duty Tractor Cutter Blade
503261



TRACTOR CUTTERS



**Blade Carrier Retainer
Castle Nut & Cotter Pin**
503226



Complete Driveline
100 hp with slip clutch gearbox, 403120
503915



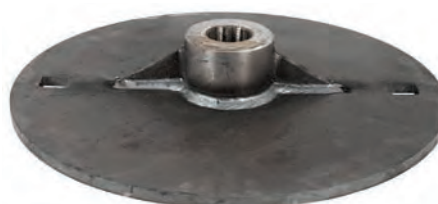
Blade Carrier Retaining Kit
503203



6' Tractor Cutter Blade Carrier
(fits 1300, 1400, 1500, 1600,
1810, 1810P Series)
503210



Bolt Kit 4-Pack
5/8" x 2"
503201



Tractor Cutter Blade Carrier
(fits 1708–1808 Series)
503220



Gearbox Shield 503000



Bolt Kit 503202




Blade Carrier Center 503230



TRACTOR CUTTERS



Shearpin Driveline
830 mm Series 4
503005




Shearpin Driveline
960 mm Series 4
503010




75 HP Shearpin Gearbox
503020




Shearpin Driveline
1200 mm Series 4
503015




4' Mower Blade
60" x 6"
503242





Flail Mower Y-Blades
(fits 403710)
503282




5' Mower Blade
60" x 6"
503244




Flail Mower Y-Blades
(fits 403720)
503283




7' Mower Blade
60" x 6"
503240

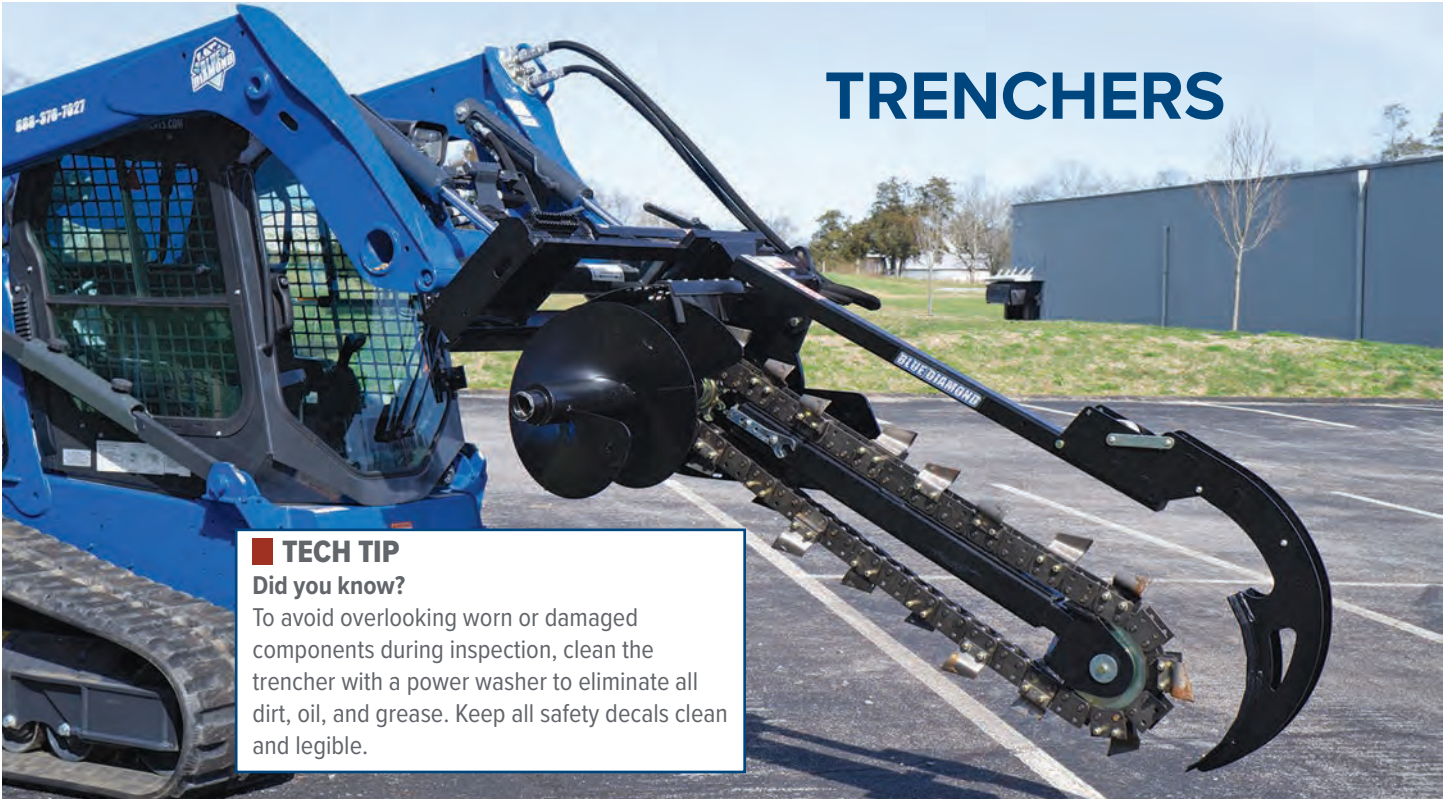



Flail Mower
Hammer Blades
(fits FMH-175H)
503287




Flail Mower
Hammer Blades
(fits FMH-205H)
503288


TRENCHERS



TECH TIP
Did you know?
 To avoid overlooking worn or damaged components during inspection, clean the trencher with a power washer to eliminate all dirt, oil, and grease. Keep all safety decals clean and legible.



Left Cup Tooth
 (48" trencher)
 231018



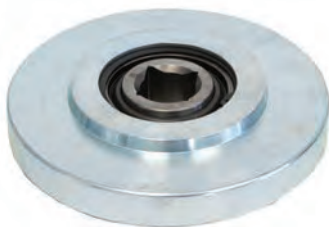
Center Rock Tooth
 (48" trencher)
 231015



Right Cup Tooth
 (48" trencher)
 231019



**Crumber Bar, Assembly
 Screw M10x16**
 231122



**Trencher Nose Roller includes
 Bearing and Circlip**
 (fits 48" and 60" models)
 231094



**Trencher Nose Roller includes
 Bearing and Circlip**
 (fits 36" models)
 231092



Center Rock Tooth
 (36" trencher, requires 8)
 231005



Chain Locknut 3/8"
 (3 ft. Requires 64)
 231080



TRENCHERS



Right Rock Tooth
(48" trencher)
231017

Left Rock Tooth
(48" trencher)
231016



Left Cup Tooth
(36" trencher, requires 6)
231008

Right Cup Tooth
(36" trencher, requires 6)
231009



Right Rock Tooth
(36" trencher, requires 6)
231007

Left Rock Tooth
(36" trencher, requires 6)
231006

Trencher Teeth

| | |
|----------------------------------|--------|
| Right Rock Tooth (48" trencher) | 231017 |
| Left Rock Tooth (48" trencher) | 231016 |
| Right Cup Tooth (48" trencher) | 231019 |
| Left Cup Tooth (48" trencher) | 231018 |
| Center Rock Tooth (48" trencher) | 231015 |
| Right Cup Tooth (36" trencher) | 231009 |
| Left Cup Tooth (36" trencher) | 231008 |
| Right Rock Tooth (36" trencher) | 231007 |
| Left Rock Tooth (36" trencher) | 231006 |
| Center Rock Tooth (36" trencher) | 231005 |

Quantities varies by chain and width

Trencher Chain Spacers

| | |
|-----------------------------|--------|
| Chain, 1 5/8" - 36mm Spacer | 231037 |
| Chain, 1 5/8" - 14mm Spacer | 231035 |
| Chain, 1 5/8" - 25mm Spacer | 231030 |

Trencher Chains

| | Earth | Rock | Combo |
|-----------|--------|--------|--------|
| 36" x 4" | 231500 | 231530 | 231515 |
| 36" x 6" | 231019 | 231535 | 231520 |
| 36" x 8" | 231018 | 231540 | 231525 |
| 48" x 6" | 231015 | 231590 | 231570 |
| 48" x 8" | 231009 | 231595 | 231575 |
| 48" x 10" | 231008 | - | 231580 |
| 48" x 12" | 231007 | - | 231585 |

Note: Additional trencher chains and custom trencher chain sizes may be available upon request



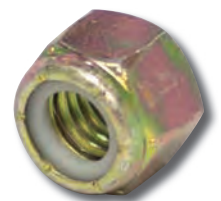
Trencher Hose Set
(fits mini & full-size skid steer models)
231000



Chain, 1 5/8" - 36mm Spacer
(3 ft. Requires 64, all spacers vary by position and width)
231037



Trencher Complete Replacement Chain



Chain Locknut 1/2"
231070

Trencher Bolts

| | |
|---------------|-----------|
| 3/8" x 2 1/2" | 231075 |
| 3/8" x 3 1/4" | 231061 |
| 3/8" x 2 3/4" | 231076 |
| 3/8" x 5 1/2" | FA-000036 |
| 3/8" x 4 1/4" | FA-000150 |

Quantities varies by chain and width



Chain, Bolt Hex 3/8" x 3 3/4"
(3 ft. Requires 24)
231077

ROTOTILLERS



Rototiller Tine & Bolt
229016-KIT-1



Rototiller Tines

| Part# | Description |
|---------------|-----------------------------|
| 229016-KIT-1 | Single tine with nut & bolt |
| 229016-KIT-68 | for 68" models |
| 229016-KIT-76 | for 76" models |

Non-Motor-Side Rototiller Bearing
229010



Right-Hand Curved Blade
(standard, for VH90 rototiller)
529201



Left-Hand Curved Blade
(standard, for VH90 rototiller)
529200



Rototiller Motor
(400 cc)
229006



VIBRATING POST DRIVERS



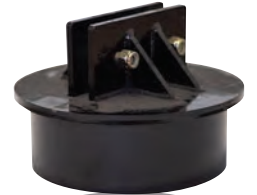
Vibrating Post Driver Rubber Bushing
200575



4" Post Adapter
100515



6" Post Adapter
100520



9" Post Adapter
100525



Vibrating Post Driver Tilt Solenoid Complete Assembly
200510



10" Post Adapter
100527



12" Post Adapter
100530



PLOWS

Plow Bar Plate Shearbolt Kit
(7/16" x 2 1/2", 5 pack)
540000



HAY SPEARS

Standard Duty Removable Stabilizer
211007



Heavy Duty Removable Stabilizer
211009



Tine 49", Conus 2
211025



WIRING HARNESSES



Universal Wiring Harness
 (for Post Driver/Angle Broom (not severe)/Dozer Blade/Power Rake - comes with power point plug)
 200010



Universal Wire Harness Attachment End to 2-Pin Only
 (for use with OEM Plug, Post Driver/Angle Broom (not severe)/Dozer Blade/Power Rake)
 200011



Wire Harness Machine Side 14-Pin
 (for Swing Arm Brush Cutter and Severe Duty Series 2 Angle Broom)
 103887



Cold Planer Universal Controller Wiring Harness



| | |
|---|--------|
| 3-Line 1-Circuit/ 4 switches (requires 160457 and 160458) | 160456 |
| 3-Line 1-Circuit (for use with 160456) | 160457 |
| 12V Power Plug Harness | 160458 |



Adapter - Series 2 216954
 (from Female DT2 Deutsch Part #216951 to Flat 2 Pin Trailer Plug)



Adapter - Series 2 216951
 (7 Pin Lower Voltage Bobcat to Male DT2 Deutsch)



Control Type, 3-Line, 1 Circuit 160400
 (for Cold Planer/Stump Grinder - specify make and model)



Flat 2 Pin to 14 Pin 216900
 (fits Dozer Blade, Post Driver, Angle Broom, Power Rake - specify make and model)



Machine Side 8-Pin 103889
 (for Swing Arm Brush Cutter & Severe Duty Series 2 Angle Broom)



Machine Side 7-Pin 103888
 (for Swing Arm Brush Cutter & Severe Duty Series 2 Angle Broom)



DECAL KITS



Decal Kits

| | |
|---|-------------|
| 72" Extreme Duty Open Front Cutter | BDKIT-03001 |
| 72" Extreme Duty Closed Front Cutter | BDKIT-03002 |
| 42" Severe Duty Mini Ex Cutter | BDKIT-03003 |
| Root Grapple, Extreme Duty (specify size) | BDKIT-06005 |
| 36" Mini Ex Heavy Duty Brush Cutter | BDKIT-03008 |
| 42" Ex Heavy Duty Brush Cutter | BDKIT-03009 |
| 50" Ex Heavy Duty Brush Cutter | BDKIT-03010 |
| 60" Heavy Duty Skid Steer Brush Cutter | BDKIT-03006 |
| 60" Heavy Duty Open Front Brush Cutter | BDKIT-03007 |
| 72" Heavy Duty Skid Steer Brush Cutter | BDKIT-03004 |
| 72" Severe Duty Brush Cutter | BDKIT-03005 |
| Stump Grinder Standard Flow | BDKIT-04001 |
| Stump Grinder High Flow | BDKIT-04002 |
| Swing Arm Stump Grinder | BDKIT-04003 |
| Cold Planer High Flow (specify size) | BDKIT-60001 |
| Cold Planer Standard Flow (specify size) | BDKIT-60002 |
| Pickup Broom (specify size) | BDKIT-16001 |

| | |
|--------------------------------------|-------------|
| Auger 6H | BDKIT-05001 |
| Auger 10H | BDKIT-05002 |
| Auger 15H | BDKIT-05003 |
| Auger 1000ED | BDKIT-05004 |
| Auger 1500ED | BDKIT-05005 |
| Auger 2000ED | BDKIT-05006 |
| Auger 2500ED | BDKIT-05007 |
| Auger 3000ED | BDKIT-05008 |
| Post Driver Hydraulic Pounding Style | BDKIT-00001 |
| Post Driver Vibrating Style | BDKIT-00002 |
| Power Rake Extreme (specify size) | BDKIT-32001 |
| Power Rake Severe (specify size) | BDKIT-32002 |
| Rototiller (specify size) | BDKIT-29001 |
| Snow Blower (specify size) | BDKIT-19001 |
| Tree Shear | BDKIT-28001 |
| Trencher (specify model) | BDKIT-31001 |

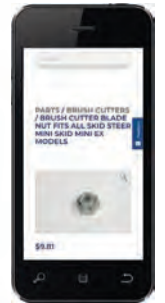
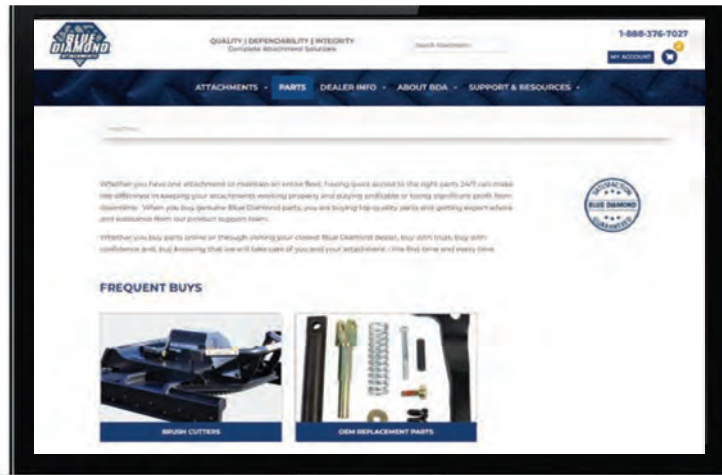
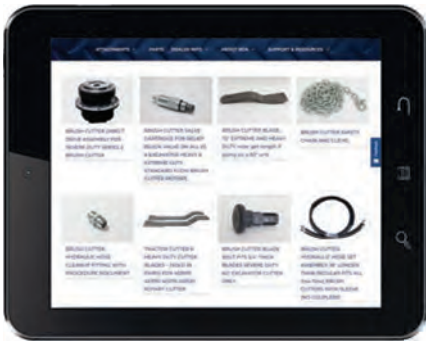


Genuine Blue Diamond® parts at your fingertips

24/7/365

888-376-7027

BLUE DIAMOND® PARTS



DON'T WAIT, SAVE TIME,
BUY BLUE DIAMOND® PARTS ONLINE!
BDAParts.com



OEM REPLACEMENT PARTS

To better serve our dealers, Blue Diamond® Attachments is now stocking OEM replacement parts for the brands you sell and service.

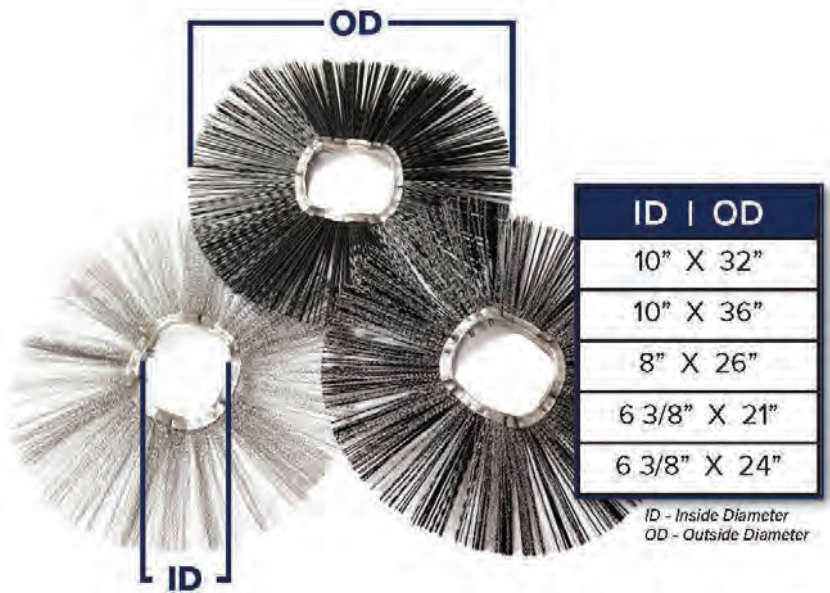
| | | | |
|------------------------------|-------|--------------------------|-------|
| Universal Broom Wafers | 55 | Takeuchi | 69 |
| Bobcat | 56-60 | Universal Mirrors | 70 |
| Case..... | 61-62 | Sprockets..... | 71 |
| John Deere | 63-64 | Safety Windshields | 72-74 |
| Kubota | 65 | Storage & Display | 75 |
| New Holland | 66-68 | | |

UNIVERSAL WAFERS



Universal Broom Wafers

| Parts# | Description |
|--------|--|
| 616000 | 6 3/8" x 21" Universal Combo Convolved |
| 616001 | 6 3/8" x 21" Universal Poly Convolved |
| 616002 | 6 3/8" x 21" Universal Wire Convolved |
| 616003 | 6 3/8" x 24" Universal Combo Convolved |
| 616004 | 6 3/8" x 24" Universal Poly Convolved |
| 616005 | 6 3/8" x 24" Universal Wire Convolved |
| 616006 | 7 1/8" x 24" Universal Poly Flat |
| 616007 | 7 1/8" x 24" Universal Wire Flat |
| 616008 | 8" x 26" Universal Combo Convolved |
| 616009 | 8" x 26" Universal Poly Convolved |
| 616010 | 8" x 26" Universal Wire Convolved |
| 616011 | 10" x 32" Universal Combo Convolved |
| 616012 | 10" x 32" Universal Poly Convolved |
| 616013 | 10" x 32" Universal Wire Convolved |
| 616014 | 10" x 36" Universal Combo Convolved |
| 616015 | 10" x 36" Universal Poly Convolved |
| 616016 | 10" x 36" Universal Wire Convolved |



Universal Wire Convolved 616016



Universal Poly Convolved 616015



Universal Combo Convolved 616014



BOBCAT



Windshield Wiper Blade Holder
(fits Bobcat M Series skid steers)
601040



Key (set of 2)
(fits Bobcat, Case, Genie
Telehandler, Ingersoll-Rand
Compactor, Timberjack Skidder)
601000



Key (set of 2)
(fits Bobcat Old Style)
601006



Windshield Wiper Blade 22"
Bobcat Skid Steers: A220, A300, S100, S130,
S150, S160, S205, S220, S250, S300, S330,
T110, T140, T180, T190, T200, T250, T300,
T320, 751, 753, 763, 773, 863, 864, 873,
963, 870
601016



Windshield Wiper Blade 28"
Bobcat Skid Steers: S510, S530, S550, S570,
S590, S630, S650, S750, S770, S850, T550,
T590, T630, T650, T750, T770, T870
601030



Windshield Wiper Blade Arm
Bobcat Skid Steers: A220, A300, S100, S130,
S150, S160, S205, S220, S250, S300, S330,
T110, T140, T180, T190, T200, T250, T300,
T320, 751, 753, 763, 773, 863, 864, 873,
963
601042



Quick Coupler Complete Plate
Bobcat Skid Steers: S510, S530, S550, S570,
S590, S595
(includes lever kits and 2 bushings)
601088



Quick Coupler Complete Plate
Bobcat Skid Steers: S150, S160, S175, S185,
S205, T180, T190, 773
(includes lever kits and 2 bushings)
601090



Quick Coupler Complete Plate
Bobcat Skid Steers: AA300, S220, S250,
S300, T250, T300, T320
(includes lever kits and 2 bushings)
601092



Quick Coupler Complete Plate
Bobcat Skid Steers: A770, S630, S650, S740,
S750, S770, T630, T650, T740, T750, T770, T870
(includes lever kits and 2 bushings)
601094



Tail Light Replacement Lens
Bobcat Skid Steers: A220, A300, S100, S130, S150, S160,
S175, S185, S205, S220, S250, S300, S330, S510, S530,
S550, S570, S590, S630, S650, S750, S770, T110, T140,
T180, T190, T200, T250, T300, T320, T550, T590, T630,
T650, T750, T770, T870, 751, 753, 763, 773, 863, 864,
873, 883, 963
601024





Quick Attach Main Pivot Bushing

Bobcat Skid Steers: S100, S130, S150, S160, S175, S185, S205, S220, S250, S300, S330, S630, S650, S750, S770, T110, T140, T180, T190, T200, T250, T300, T320, T630, T650, T750, T770, A220, 653, 751, 753, 763, 773, 863, 864, 873, 883

(requires 2)

601002



Quick Attach Main Pivot Bushing

Bobcat Skid Steers: S100, S130, S150, S160, S175, S185, S205, S220, S250, S300, S330, T110, T140, T180, T190, T200, T250, T300, T320, A250, A300 743, 751, 753, 763, 773, 863, 873, 883, 963

(requires 2)

601008



BOBCAT

Shop online at
www.BDAParts.com

OEM PARTS



Quick Attach Main Pivot Bushing

Bobcat Skid Steers: S100, S130, S150, S160, S175, S185, S205, S220, S250, S300, S330, S510, S530, S550, S630, S650, S750, S770, T110, T140, T180, T190, T200, T250, T300, T320, A250, A300

(requires 2)

601010



Quick Attach Main Torsion Bushing

Bobcat Skid Steers: A250, A300, S100, S130, S150, S160, S175, S185, S205, S220, S250, S300, S510, S530, S550, S570, S590, S630, S650, S750, S770, T110, T140, T180, T190, T200, T250, T300, T320, T550, T590, T630, T650, T750, T770, T870, 751, 753, 763, 773, 863, 873, 883, 963

(requires 2)

601012



Quick Attach Main Pivot Bushing

Bobcat Skid Steers: A300, S150, S160, S175, S185, S205, S220, S250, S300, T180, T190, T200, T250, T300, T320, 773

(requires 2)

601018

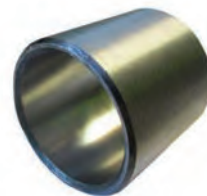


Quick Attach Main Pivot Bushing

Bobcat Skid Steers: A220, A300, S100, S130, S150, S160, S175, S185, S205, S220, S250, S300, S330, S510, S530, S550, S570, S590, S630, S650, S750, S770, T110, T140, T180, T190, T200, T250, T300, T320, T550, T590, T630, T650, T750, T770, T870, 751, 753, 763, 773, 863, 864, 873, 883, 963

(requires 2)

601026



Quick Attach Main Pivot Bushing

Bobcat Skid Steers: A300, (Large Frame) S220, S250, S300, S330, T250, T300, T320

(requires 2)

601048



Quick Attach Main Pivot Bushing

Bobcat Skid Steers: A770, S630, S650, S740, S750, S770, T630, T650, T740, T750, T770, T870

(requires 2)

601062



BOBCCAT



LEVER & WEDGE KITS
Right Side Bobcat M Series
 (includes lever spring pin and hardware)
601072



Left Side Bobcat M Series
 (includes lever spring pin and hardware)
601078



Right Side Bobcat G Series
 (includes lever spring pin and hardware)
601074



Left Side Bobcat G Series
 (includes lever spring pin and hardware)
601076



Quick Attached Pivot Kit for Lever
 Bobcat Skid Steers (new style): S510, S530, S550, S570, S590, S630, S650, S750, S770, T550, T590, T630, T650, T750, T770, T870
 (includes 1 pivot wedge pin, 1 roll pin, 1 socket head bolt)
601044



Quick Attached Pivot Kit for Lever
 Bobcat Skid Steers (old style): S510, S530, S550, S570, S590, S630, S650, S750, S770, T550, T590, T630, T650, T750, T770, T870
601046



Quick Attach Lever for Left Side

Bobcat Skid Steers: A220, A300, A770, S100, S130, S150, S160, S175, S185, S205, S220, S250, S300, S330, S510, S530, S550, S570, S590, S630, S650, S750, S770, S850, T110, T130, T140, T180, T190, T200, T250, T300, T320, T450, T550, T590, T630, T650, T750, T770, T870, 553, 630*, 631*, 632, 632*, 641*, 642*, 643*, 645*, 653, 730*, 732*, 741*, 742*, 743*, 751, 753, 763, 773, 853, 863, 864, 873, 883, 963
 (* these models have more than one Bobtach option)
601050



Quick Attach Lever for Right Side

Bobcat Skid Steers: A220, A300, A770, S100, S130, S150, S160, S175, S185, S205, S220, S250, S300, S330, S510, S530, S550, S570, S590, S630, S650, S750, S770, S850, T110, T130, T140, T180, T190, T200, T250, T300, T320, T450, T550, T590, T630, T650, T750, T770, T870, 553, 630*, 631*, 632, 632*, 641*, 642*, 643*, 645*, 653, 730*, 732*, 741*, 742*, 743*, 751, 753, 763, 773, 853, 863, 864, 873, 883, 963
 (* these models have more than one Bobtach option)
601052



Fuel Cap
 (fits Bobcat skid steers)
601014



Drive Belt Arm Tensioner (arm only)
 Bobcat Skid Steers: 751, 753, 763, 773, 7753, 853, 863, 873, 883, 953, 963, S100, S130, S150, S160, S175, S185, S205, S220, S250, S300, S330, T110, T140, T180, T190, T200, T250, T300, T320, A250, A300
601060



Drive Belt Arm Tensioner
 Bobcat Skid Steers: S100, S130, S150, S160, S175, S185, S205, T140, 751, 753, 763, 773, 863, 883, 963
601082



Shop online at
www.BDAparts.com



Main Pivot Kit for Lever

Skid Steer Loaders: A220, A300, S100, S130, S150, S160, S175, S185, S205, S220, S250, S300, S330, T110, T130, T140, T180, T190, T200, T250, T300, T320, 553, 630, 631, 632, 641, 642, 643, 645, 653, 730, 732, 741, 742, 743, 753, 763, 773, 853, 863, 864, 873, 883, 963
601022



Main Pivot Kit for Lever

Skid Steer Loaders: A770, S510, S530, S550, S570, S590, S630, S650, S750, S770, S850, T450, T550, T590, T630, T650, T750, T770, T870
601020



Door Spring

Bobcat Skid Steers: 530, 540, 543, 553, 630, 631, 642, 643, 645, 731, 732, 741, 742, 743, 751, 773 (SNs 509616001-50962999 509635001 and above), 825, 843, 853, 943, 953
(shock measures 18 1/4" center to center from the ball stud to mounting hole)
601036



Door Spring

Bobcat Skid Steers: A220, A300, S100, S130, S150, S160, S175, S185, S205, S220, S250, S300, S330, T110, T140, T190, T200, T250, T300, T320, 751, 753, 763, 773, 863, 864, 873, 883, 963
601032



Door Spring

Bobcat Skid Steers: S510, S530, S550, S570, S590, S630, S650, S750, S770, T550, T590, T630, T650, T750, T770, T870
601054



Pivot Pin for Quick Attach & Boom

Bobcat Skid Steers: 520, 530, 533, 540, 542, 542B, 543, 630, 631, 632, 641, 642, 643, 645, 730, 731, 732, 741, 742, 743, 753, 7753
601034



Quick Attach Lower Pivot Pin

Bobcat Skid Steers: T110, T140, T180, T190
601038



Quick Attach Lower Pivot Pin

Bobcat Skid Steers: A770, S630, S650, S740, S750, S770, T630, T650, T740, T750, T770, T870
601066



Quick Attach Pivot Pin Kit (small)

Bobcat Skid Steers: S220, S250, S300, S330, T250, T300, T320
601056



Quick Attach Lower Pivot Pin

Bobcat Skid Steers: 751, 753, 763, 773, 7753, 853, 863, 873, 883, 953, 963, S100, S130, S150, S160, S175, S185, S205, S220, S250, S300, S330, T110, T140, T180, T190, T200, T250, T300, T320, A250, A300
601058



Quick Attach Wedge Pin

Bobcat Skid Steers: A220, A300, A770, S100, S130, S150, S160, S175, S185, S205, S220, S250, S300, S330, S510, S530, S550, S570, S590, S630, S650, S750, S770, S850, T110, T130, T140, T180, T190, T200, T250, T300, T320, T450, T550, T590, T630, T650, T750, T770, T870, 553, 630, 631, 632, 641, 642, 643, 645, 653, 730, 732, 741, 742, 743, 751, 753, 763, 773, 853, 863, 864, 873, 883, 963
601068



BOBCAT



M Series Safety Windshield

Fits models: S450, S510, S530, S550, S570, S590, S630, S650, S750, S770, S850
(1/2" thick, milled edge insert)

203207



G Series Safety Windshield

Fits models: 751, 753, 763, 863, 873, 883, S130, S150, S160, S170, S185, S205, S220, S250, S300, S330, T140, T180, T190, T200, T250, T300, T320, A220, A300

(1/2" thick, milled edge insert)

203205



Quick Attach Hydraulic Cylinder

Bobcat Skid Steers: 753, 763, 773, 863, 864, 873, 883, A220, A300, S100, S130, S150, S160, S175, S185, S205, S220, S250, S300, S330, T110, T140, T180, T190, T200, T250, T300, T320

601086



Quick Attach Hydraulic Cylinder

Bobcat Skid Steers: A770, S510, S530, S550, S570, S590, S595, S630, S650, S750, S770, S850, T450, T550, T590, T595, T630, T650

601084



Cab Lock Down Mechanism

Bobcat Skid Steers: 440, 443, 450, 453, 463, 520, 530, 533, 540, 542, 543, 553, 630, 631, 632, 641, 642, 643, 645, 653, 730, 731, 732, 741, 742, 743, 751, 753, 763, 773, 843, 853, 863, 864, 873, 883, 953, 963, 7753, A220, A300, MT50, MT52, MT55, S70, S100, S130, S150, S160, S175, S185, S205, S220, S250, S300, S330, S630, S650, S850, T110, T140, T180, T190, T200, T250, T300, T320, T630, T650, T870, 320, 322, 325, 328, 331, 334, 337, 341, 442

601064



Stud & Nut Replacement Set

Skid Steer Loaders: A220, A300, A770, S70, S100, S130, S150, S160, S175, S185, S205, S220, S250, S300, S330, S510, S530, S550, S570, S590, S630, S650, S750, S770, S850, T110, T130, T140, T180, T190, T200, T250, T300, T320, T450, T550, T590, T630, T650, T750, T770, T870, 500, 520, 530, 533, 540, 542B, 543, 553, 600, 610, 611, 620, 630, 631, 632, 641, 642, 643, 645, 653, 700, 720, 730, 731, 732, 741, 742, 743, 751, 753, 763, 773, 843, 853, 863, 864, 873, 883, 963

(requires 1 per wheel)

601028



Safety Mirror Kit

Fits Bobcat Skid Steers
M & G Series
(includes hardware)

601080



Drive Belt Arm Tensioner Complete Assembly

Bobcat Skid Steers: 751, 753, 763, 773, 753, 853, 863, 873, 883, 953, 963, S100, S130, S150, S160, S175, S185, S205, S220, S250, S300, S330, T110, T140, T180, T190, T200, T250, T300, T320, A250, A300

601070



CASE



Quick Coupler Complete Plate
Case Skid Steers: 1835, 1835B, 1835C, 1838, 1840
(includes lever kit and 2 bushings)
601118



Quick Coupler Complete Plate
Case Skid Steers: 1845, 1845B, 1845C
(includes lever kit and 2 bushings)
601114



Quick Coupler Complete Plate
Case Skid Steers: 75XT, 85XT, 90XT, 95XT, 445, 445CT, 450, 450CT, 465
(includes lever kit and 2 bushings)
601120



Quick Coupler Complete Plate
Case/New Holland Skid Steers: SR174, SR200, SR220, S250, SV185, SV250, SV300, TR270, TR320, TV380, L218, L220, L223, L225, L230, C227, C232
(includes lever kit and 2 bushings)
601138



Quick Coupler Complete Plate
Case Skid Steers: 40XT, 60XT, 70XT, 410, 420, 420CT, 430, 440, 440CT
(includes lever kit and 2 bushings)
601116



Key (set of 2)
(fits Case machines)
601100



Door Spring
Case Skid Steers: 1835C, 1838, 1840, 1845C
601102



Quick Attached Lever & Wedge Kit
Case Skid Steer Loaders: 1835C, 1838, 1840, 1845C Series
(requires 2, includes lever spring pin and hardware)
601108



Quick Attach Main Pivot Single Bushing
Case/New Holland Skid Steers: SR130, SR150, SR175, SR200, SR220, SR250, SV185, SV250, V300, SV340, TR270, TR310, TR320, TV380LS160, LS170, L213, L215, L218, L220, L221, L223, L225, L230, L234
(requires 2)
Single **601122**



CASE



Sprocket

8 Bolt x 17 Teeth

Commonly fits models: CT420, CT440, CT445, CT450, TV 380, TR270, TR310, TR320, TR340, C175, C185, C190, LT185, LT190, C227, C232, C238 (please verify serial number)

603345



Rubber Track Block Pattern

300 x 88 x 52.5

Fits models: CX31B, CX36, CX36B, CX36BMC, CX36BMR, CX36BZTS, CX39B

603410-N



Rubber Track C-Lug Pattern

320 x 50 x 86

Fits models: 420CT & TR270

603414-C



Quick Attach Wedge Pin

Case/New Holland Skid Steers: 410, 40XT, 430, 60XT, 440, 420, 70XT

601124



Quick Attach Lever & Wedge Kit

Case Skid Steers: 75XT, 85XT, 90XT, 95XT, 445, 445CT, 450, 450CT, 465

(includes lever spring pin and hardware)

Left Side Kit

601109

Right Side Kit

601110



Windshield Wiper Blade Arm

(fits Case 200 Series Skid Steers)

601104



Quick Attach Lever Only

Case/New Holland Skid Steers

Left Side

601126

Right Side

601128



Windshield Wiper Blade Arm

(fits Case Skid Steers)

601106



Quick Attach Main Pivot Pin Kit

Case/New Holland Skid Steers

601130



Quick Attach Main Pivot Pin Kit

Case/New Holland Skid Steers: L35, L140,

L150, L160, L170, L170, L175, L180, L185, L190, LS160, LS170, LS180V, LS185B, LS190B, LT190B

601134



JOHN DEERE



Quick Attach Main Pivot Pin

John Deere Skid Steers: 12GR, 314G, 316GR, 317G, 318G, 319D, 319E, 320D, 320E, 323D, 320E, 318E

601214



Quick Attach Main Pivot Pin Kit

John Deere Skid Steers: 326D, 326E, 328D, 328E, 329D, 329E, 332D, 332E, 333D, 333E

601230



Windshield Wiper Blade 15"

John Deere Skid Steers: 240, 260, 313, 315, 318, 325

601202



Door Spring

John Deere Skid Steers: CT315, CT322, CT332, 240, 250, 260, 270, 280, 313, 315, 317, 320, 325, 328, 332

601204



Quick Attach Main Pivot Pin Kit

John Deere Skid Steers: 240, 250, 313, 315, 317, 320

601224



Quick Coupler Complete Plate

John Deere Skid Steers: 6675, 7775, 8875 (includes lever kit and 2 bushings)

601234



Windshield Wiper Blade Arm

John Deere Skid Steers: 240, 250, 260, 270, 280, 315, 317, 320, 325,C 328, 332, CT315, CT322, CT332

601212



Key (set of 2)

John Deere Skid Steers

601200



Quick Attach Main Pivot Pin

John Deere Skid Steers: 318D, 318E, 319D, 319E, 320D, 320E, 323D, 323E

601206



Quick Attach Main Pivot Pin

John Deere Skid Steers: 326D, 326E, 328D, 328E, 329D, 329E, 332D, 332E, 333D, 333E

601218



Quick Attach Main Pivot Pin

John Deere Skid Steers: 240, 250, 313, 315, 317, 320

601216



Quick Attach Main Pivot Bushing

John Deere Skid Steers: 332D, 333D, 326D, 328E, 326E, 329E, 328D, 332E, 329D, 333E

(requires 2)

601210



Quick Attach Main Pivot Bushing

John Deere Skid Steers

601226



**Cab Machines
Safety Windshield**

Fits models: 318D, 319D,
320D, 323D, 326D, 328D,
329D, 332D, 333D
(1/2" thick, milled edge
insert)

203256



G Cab Machines Safety Windshield

Fits models: 314G, 317G, 318G, 320G,
324G, 325G, 330G, 332G, 333G
(1/2" thick, milled edge
insert)

203257



Quick Attach Latch Kit

John Deere Skid Steer

Loaders:

Electric Disconnect: 317, 320,
325, 328, 318D, 319D, 320D,
323D, 326D, 328D, 329D,
332D, 333D, CT322, 324E,
330G, 331G, 332G, 333G



Manual Disconnect: 318D, 318E, 319D, 319E, 320D, 320E, 323D,
323E, 326D, 326E, 328D, 328E, 329D, 329E, 332D, 332E, 333D,
333E

601228



Quick Attach Lever Only

John Deere Skid Steers

Left Side

601220

Right Side

601222



Fuel Cap

John Deere
Skid Steers

601208



Rubber Tracks C-Pattern

320 x 52 x 86

Fits model: 319D, 319E, 322, 323D, 323E, 325G

603415-C



Rubber Tracks Zig-Zag Pattern

450 x 56 x 86

Fits models: 329D, 329E, CT 332, 333D, 333E

603430-Z



Sprocket

10 Bolt x 17 Teeth

Commonly fits models: CT319,
CT323, CT329, CT331

(please verify serial number)

603325



Sprocket

8 Bolt x 16 Teeth

Commonly fits models: CT319D, CT323D
(please verify serial number)

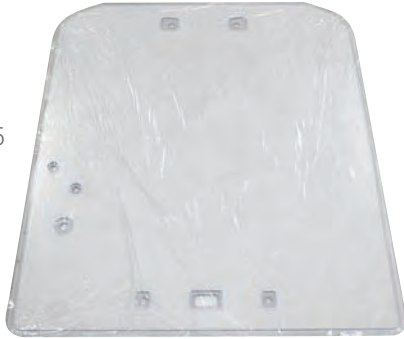
Part Number: 603330



KUBOTA

SSV Series Safety Windshield

Fits models: SSV65, SSV75
(1/2" thick, milled edge insert)
203263



SVL Series Safety Windshield

Fits models: SVL75, SVL90, SVL95
(1/2" thick, milled edge insert)
203261



Rubber Track Block Pattern

300 x 84 x 54.5 Wide Guide
Fits models: K035, RX302, U30, U30HG, U30-1, U30-2, U30-3, U35, U35-3HG, UX30, K35
603408-W



Rubber Track Block Pattern

400 x 76 x 72.5 Wide Guide
Fits models: KH055N
603424-W



Rubber Track Block Pattern

300 x 84 x 52.5 Narrow Guide
Fits models: SK035, RX302, U30, U30HG, U30-1, U30-2, U30-3, U35, U35-3HG, UX30, K35
603408-N



Rubber Track Block Pattern

300 x 80 x 52.5 Narrow Guide
Fits model: K028, K030
603407-N



Rubber Track Block Pattern

350 x 86 x 54.5 Wide Guide
Fits models: KX121-3
603417-W



Safety Mirror

Kubota Skid Steers:
SVL75 & SVL90
(includes mounting hardware)
601300



Lockable Fuel Cap
Kubota Skid Steers
601302



UNDERCARRIAGE PARTS AVAILABLE

Call 888-376-7027

for a quote!



NEW HOLLAND



Wheel Nut Set

New Holland Skid Steers: L35, L120, L125, L140, L150, L160, L170, L180, L185, L190, L225, L250, L255, L325, L425, L445, L451, L452, L454, L455, L465

601406



Wheel Stud Kit

New Holland Skid Steers: L35, L120, L125, L140, L150, L160, L170, L180, L185, L190, L225, L250, L255, L325, L425, L445, L451, L452, L454, L455, L465

601410



Fuel Cap

New Holland Skid Steers

601404



Windshield Wiper Blade Arm

New Holland 200 Series Skid Steers: L213, L215, L218, L220, L221, L223, L225, L228, L230, L234

601412



Windshield Wiper Blade Arm

New Holland Skid Steers: C175, C185, L160, L180, L190, L170, L175, C190, LS190, LT185.B, LS160, LT190.B, LS170, L185, LS180.B, LS185.B, LS190.B

601416



Windshield Dual Wiper Blade Arm

New Holland 200 Series Skid Steers (after 2013)

601418



Door Spring

New Holland Skid Steers: C175, C185, C190, L140, L150, L160, L170, L465, L565, L865, LS140, LS150, LS160, LS170, LS180, LS180B, LS185B, LS190, LS190B, LT185B, LT190B, LX465, LX485, LX565, LX665, LX865, LX885

601414



Quick Attach Wedge Pin

New Holland Skid Steers: C175, C185, C190, L140, L150, L160, L170, L175, L180, L185, L190, L465, L565, L865, LS140, LS150, LS160, LS170, LS180, LS180B, LS185B, LS190, LS190B, LT185B, LT190B, LX465, LX485, LX565, LX665, LX865, LX885, LX985

601422



Quick Attach Main Pivot Single Bushing

Case/New Holland Skid Steers: SR130, SR150, SR175, SR200, SR220, SR250, SV185, SV250, V300, SV340, TR270, TR310, TR320, TV380, LS160, LS170, L213, L215, L218, L220, L221, L223, L225, L230, L234

Single 601122



NEW HOLLAND



Rubber Track C-Pattern
450 x 55 x 86
Fits models: C185, C190
603429-C



Rubber Track Zig-Zag Pattern
450 x 55 x 86
Fits models: C185, C190
603429-Z



Rubber Track Block Pattern
300 x 88 x 52.5 Narrow Guide
Fits models: EH35B
603410-N



Rubber Track Block Pattern
400 x 76 x 72.5 Wide Guide
Fits models: EC60
603424-W



UNDERCARRIAGE PARTS AVAILABLE

Call 888-376-7027 for a quote!

NEW HOLLAND



Quick Coupler Complete Plate

Case/New Holland Skid Steers: L218, L220, L223, L225, L230, C227, C232

(includes lever kit and 2 bushings)

601138



Quick Attach Lever Only

Case/New Holland Skid Steers

Left Side 601126

Right Side 601128



Key (set of 2)

New Holland machines

601400



Quick Attach Cylinder Pin

New Holland Skid Steers: C175, C185, C190, L140, L150, L160, L170, L175, L180, L185, L190, L465, L565, L865, LS140, LS150, LS160, LS170, LS180, LS180B, LS185B, LS190, LS190B, LT185B, LT190B, LX465, LX485, LX565, LX665, LX865, X885, LX985

601402



Quick Attach Main Pivot Pin Kit

New Holland Skid Steers: C175, C185, C190, L140, L150, L160, L170, L175, L180, L185, L190, L465, L565, L865, LS140, LS150, LS160, LS170, LS180, LS180B, LS185B, LS190, LS190B, LT185B, LT190B, LX465, LX485, LX565, LX665, LX865, LX885, LX985

601408



Quick Attach Wedge Pin

Case/New Holland Skid Steers: 410, 40XT, 430, 60XT, 440, 420, 70XT

601124



Quick Attach Main Pivot Pin Kit

New Holland Skid Steers: LS140, LS150, LT185.B, LS160, L865, LS170, LS180.B, L140, LS185.B, L150, L160, LX465, LX485, L170, LX565, LX665, LX865, LX885, L180, L465, SL40B, L565

601420



Quick Attach Main Pivot Pin Kit

Case/New Holland Skid Steers: L35, L140, L150, L160, L170, L170, L175, L180, L185, L190, LS160, LS170, LS180V, LS185B, LS190B, LT190B

601134



Quick Attach Main Pivot Pin Kit

Case/New Holland Skid Steers

601130



TAKEUCHI

Safety Windshield

Fits model: TL250
(1/2" thick, milled
edge insert)

203241



Quick Attach Wedge Pin Kit

Takeuchi Skid Steers: TL120, TL130, TL140, TL150,
TL220, TL230, TL240, TL250, TL8, TL10, TL12, TL10V2,
TL12V2, TL12R2

601504



Fuel Cap

Takeuchi Skid Steers
601502



Key (set of 2)

Takeuchi Skid Steers
601500



Rubber Tracks C-Pattern

320 x 52 x 86

Fits Takeuchi: TL130, TL230

603415-C



Rubber Tracks Block Pattern

450 x 48 x 100

Fits Takeuchi: TL140, TL240

603425



Rubber Tracks Block Pattern

450 x 50 x 100

Fits Takeuchi: TL150 TL250

603426



Sprocket

9 Bolt x 16 Teeth

Commonly fits Takeuchi: TL130, T8
(please verify serial number)

603335



Sprocket

9 Bolt x 15 Teeth

Commonly fits Takeuchi: TL10 V2
(not standard TL10, please verify
serial number)

603340



Shop online at
www.BDAparts.com

UNIVERSAL MIRRORS



Mirror with Universal Mounting Bracket

Wide style, 13" x 3.75". (fits most skid steers, includes mounting hardware)

601902



Mirror with Universal Mounting Bracket

Fat style, 8.25" x 4.75".
(fits most skid steers, includes mounting hardware)

601900



BLUE DIAMOND® ATTACHMENTS NOW ALSO OFFERS BOTTOM ROLLERS AND IDLERS FOR:

- Bobcat
- Case
- New Holland
- Caterpillar
- Gehl
- JCB
- John Deere
- Kubota
- Komatsu
- Takeuchi
- Terex
- Volvo
- Yanmar track loader
- Mini excavator models!



UNDERCARRIAGE PARTS AVAILABLE

Call 888-376-7027 for a quote!

A collection of track and undercarriage parts including a long section of track with sprockets, a sprocket, a roller, and a large gear.

SPROCKETS



8 Bolt x 17 Teeth
Commonly fits Bobcat: T630,
T650, T740, T870
(please verify serial number)
603310



10 Bolt x 17 Teeth
Commonly fits John Deere: CT319,
CT323, CT329, CT331
Commonly fits Newer: CT322,
CT333E, CT333G
(please verify serial number)
603325



15 Bolt x 15 Teeth
Commonly fits Bobcat: T450,
T550, T590
(please verify serial number)
603315



9 Bolt x 16 Teeth
Commonly fits Takeuchi: TL130, T8
(please verify serial number)
603335



6 Bolt x 15 Teeth
Commonly fits Bobcat: T190, T590
(please verify serial number)
603320



9 Bolt x 15 Teeth
Commonly fits Takeuchi: TL10 V2
(not standard TL10, please verify
serial number)
603340



8 Bolt x 16 Teeth
Commonly fits John Deere:
CT319D, CT323D
(please verify serial number)
603330



8 Bolt x 17 Teeth
Commonly fits Case: CT420,
CT440, CT445, CT450, TV 380,
TR270, TR310, TR320, TR340,
C175, C185, C190, LT185, LT190,
C227, C232, C238, GEHL VT320
(please verify serial number)
603345



SAFETY WINDSHIELDS

1/2" thick, milled edge insert



G Series Safety Windshield

Fits models: 751, 753, 763, 863, 873, 883, S130, S150, S160, S170, S185, S205, S220, S250, S300, S330, T140, T180, T190, T200, T250, T300, T320, A220, A300

(1/2" thick, milled edge insert)

203205



G Cab Machines Safety Windshield

Fits models: 314G, 317G, 318G, 320G, 324G, 325G, 330G, 332G, 333G

(1/2" thick, milled edge insert)

203257



M Series Safety Windshield

Fits models: S450, S510, S530, S550, S570, S590, S630, S650, S750, S770, S850

(1/2" thick, milled edge insert)

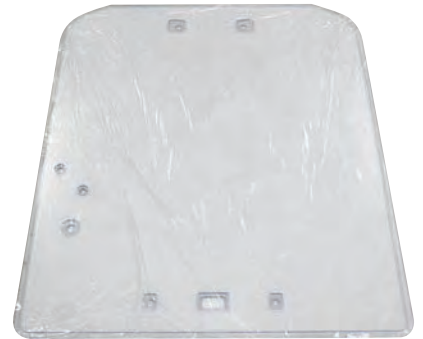
203207



SSV Series Safety Windshield

Fits models: SSV65, SSV75
(1/2" thick, milled edge insert)

203263



SVL Series Safety Windshield

Fits Kubota models:
SVL75, SVL90, SVL95
(1/2" thick, milled edge insert)

203261



SAFETY WINDSHIELDS

1/2" thick, milled edge insert

Safety Windshield

Fits model: TL250
(1/2" thick, milled
edge insert)
203241



M Series

Fits Bobcat models: S450, S510, S530, S550, S570, S590,
S630, S650, S750, S770, S850
203207



G Cab Machines

Fits John Deere models: 314G, 317G, 318G, 320G, 324G,
325G, 330G, 332G, 333G
203256



G Series

Fits Bobcat models: 751, 753, 763, 863, 873, 883, S130,
S150, S160, S170, S185, S205, S220, S250, S300, S330,
T140, T180, T190, T200, T250, T300, T320, A220, A300
203205



SSV Series

Fits Kubota models: SSV65, SSV75
203263



SAFETY WINDSHIELDS

1/2" thick, milled edge insert



CAT

Fits models: C Cab Machines
203212



JCB

Fits models: 135, 150, 175, 190, 205, 210, 215, 225, 250,
260, 270, 280, 300, 320, 3TS-8T, 3TS-8W
203271



CAT

Fits models: D Cab Machines
203214



Terex

Fits models: ASV-TR75, VT70
203281



Terex

Fits models: PT75, PT80
203283



Gehl

Fits model: RT250
203247



Positrac

Fits models: ASV-RC85 & RC100
203266



STORAGE SYSTEMS & DISPLAY SOLUTIONS

Great for showrooms, trade shows, and training!

STORAGE & DISPLAY



Universal Stand
700006



Auger Bit Holder
105950



Hydraulic Breaker Holder
Holds up to 6 units (size HB50–HB300).
135900



Hydraulic Breaker Stand
700020



Brush Cutter Display Stand
700005-72
(fits all 72" models)



PARTS & ACCESSORIES

4512 Anderson Road | Knoxville, TN 37918



888-376-7027



BDAparts.com



© 2024 Blue Diamond® Attachments. All Rights Reserved.